



State of the State: Washington Traffic Fatalities

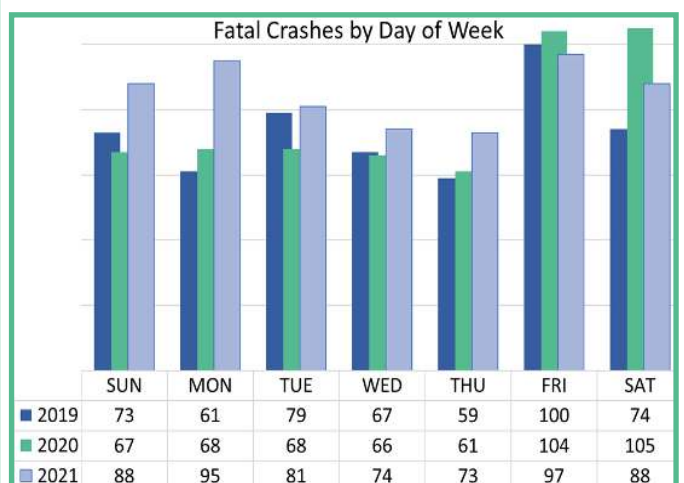
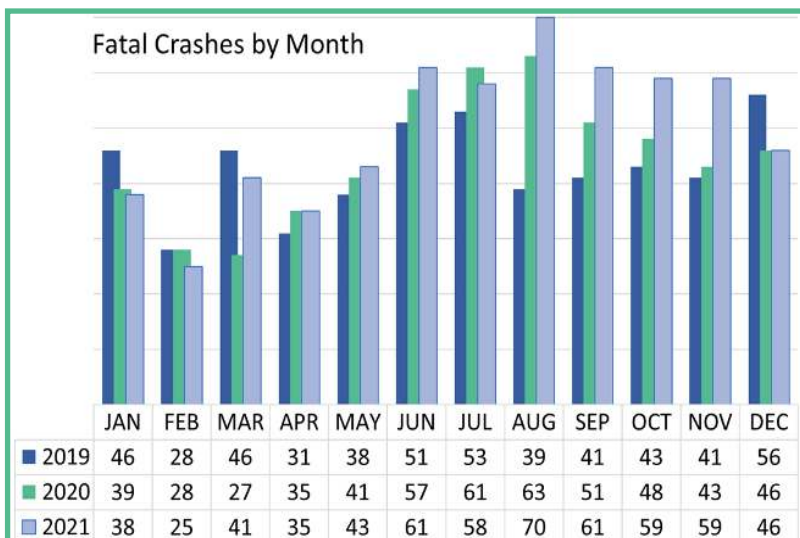
Traffic fatalities on Washington roadways are increasing. In just two years fatalities have increased 23 percent (from 538 in 2019 to 663 in 2021*) and is at the highest number in almost twenty years. While there were some expected and unexpected impacts from COVID-19 on traffic fatalities in 2020, in 2021 all high-risk behaviors and factors contributing to fatal crashes have increased. Pedestrian fatalities are at historical highs.

I care, because 1,775 people have died in traffic crashes in Washington since 2019. In 2020, traffic fatalities increased on local roads (city streets and county roads) but declined on interstates and highways. Traffic fatalities on local roads were sustained in 2021, but increased on interstates and highways.

Traffic Fatalities in Washington State					
	2019	2020	% Change in 2020	*2021	% Change in 2021
All Fatalities	538	574	6.7%	663	15.5%
Impaired Driver Involved	241	274	13.7%	292	6.6%
Speeding Involved	152	173	13.8%	205	18.5%
Distracted Driver Involved	119	90	-24.4%	117	30.0%
Unrestrained Occupants	108	110	1.9%	149	35.5%
Motorcyclists	95	93	-2.1%	93	0.0%
Active Transportation Users	116	123	6.0%	158	28.5%
Driver Ages 16-17 Involved	9	22	144.4%	33	50.0%
Driver Ages 18-20 Involved	42	63	50.0%	65	3.2%
Driver Ages 21-25 Involved	102	84	-17.6%	126	50.0%
Driver Ages 70+ Involved	89	74	-16.9%	80	8.1%
Heavy Truck Involved	83	69	-16.9%	94	36.2%
Traffic Serious Injuries	2,254	2,428	7.6%	2,924	21.6%

Traffic Fatalities in Washington State					
	2019	2020	% Change in 2020	*2021	% Change in 2021
Interstate	60	54	-10.0%	87	61.1%
US highway	55	36	-34.5%	46	27.8%
State route	140	137	-2.1%	166	21.2%
County road	137	152	10.9%	155	2.0%
City street	114	145	27.2%	135	-6.9%
Other	7	15	114.3%	6	-60.0%

Fatal crashes are typically highest in the summer months and on weekends. From 2020-2021 the rise in fatal crashes was primarily concentrated in the months August—November. In 2020, there was a rise in fatal crashes occurring on Saturdays. However, in 2021 there was a smaller number of fatal crashes on Fridays and Saturdays and a rise in fatal crashes on Sundays and weekdays Mondays—Thursdays.



Data Notes:

Washington Coded Fatal Crash (CFC) Files, Washington Traffic Safety Commission

*2021 numbers are preliminary at the time of this publication (May 2022)

For more information, please contact (360) 725-9860. <https://wtsc.wa.gov/research-data/>



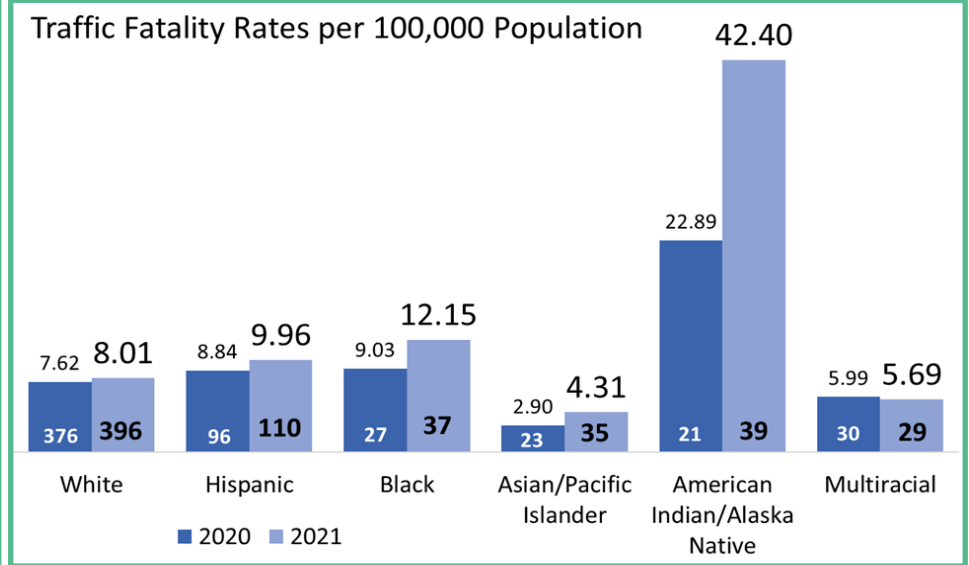
State of the State: Washington Traffic Fatalities

Rates of traffic fatalities and serious injuries in Washington are increasing across all population exposure measures; vehicle miles traveled (VMT), state population, number of licensed drivers, and number of registered vehicles. Rates by race/ethnicity are only available for traffic fatalities as that demographic information is collected on death certificates. Like many other health outcomes, traffic fatality rates vary greatly by race/ethnicity.

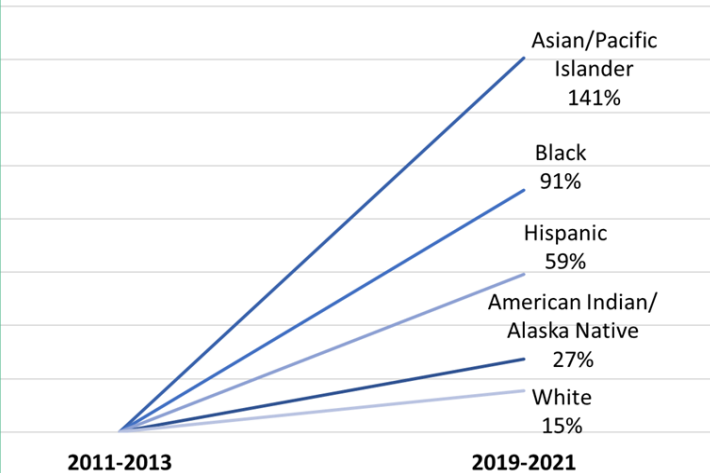
Traffic Fatality and Serious Injury Rates in Washington State			
	2019	2020	*2021
Vehicle Miles Traveled (VMT) (in 1,000s)	62,537	53,512	57,447
Fatality Rate per 100 Million VMT	0.860	1.073	1.154
Serious Injury Rate per 100 Million VMT	3.604	4.537	5.090
Population	7,546,410	7,707,047	7,766,975
Fatality Rate per 100,000 Population	7.1	7.4	8.5
Serious Injury Rate per 100,000 population	29.9	31.5	37.6
Licensed Drivers	5,779,353	5,888,294	5,920,572
Fatality Rate per 100,000 Lic. Drivers	9.3	9.7	11.2
Serious Injury Rate per 100,000 Lic. Drivers	39.0	41.2	49.4
Registered Vehicles	8,133,262	8,042,128	8,139,392
Fatality Rate per 100,000 Reg. Vehicles	6.6	7.1	8.1
Serious Injury Rate per 100,000 Reg. Vehicles	27.7	30.2	35.9

Did you know?

- ⇒ Native Americans/Alaska Natives have the highest traffic fatality rate per 100,000 population, and it nearly doubled in 2021.
- ⇒ The percent change in the number of traffic fatalities over the previous ten years has increased most rapidly among Asian/Pacific Islanders and Blacks.
- ⇒ Although the traffic fatality rate per 100,000 population among Whites is low, this group has the highest number of traffic fatalities.



Percent Change in Traffic Fatalities by Race



Traffic fatalities have increased for all race/ethnicity groups. However, the rate at which traffic fatalities are increasing is disparate among these groups. White fatalities occur in the highest numbers; Asian/Pacific Islander and Black fatalities are increasing in numbers the fastest; and American Indian/Alaska Natives continue to have the highest traffic fatality rate per 100,000 population.

Data Notes:

VMT (WSDOT Travel Data), Population (OFM Population Estimates), Licensed Drivers and Registered Vehicles (DOL Statistics at a Glance 2021) *2021 numbers are preliminary at the time of this publication (May 2022)

For more information, please contact (360) 725-9860.

<https://wtsc.wa.gov/research-data/>



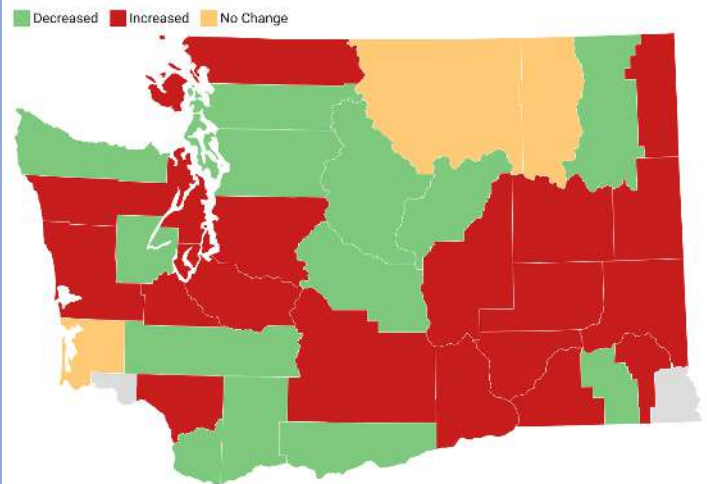
State of the State: Washington Traffic Fatalities

Traffic Fatalities in Washington State by County*

	2019	2020	% Change in 2020		2021	% Change in 2021	
Adams	6	5	-16.7%	↓	6	20.0%	↑
Benton	11	12	9.1%	↑	17	41.7%	↑
Chelan	5	6	20.0%	↑	5	-16.7%	↓
Clallam	3	10	233.3%	↑	8	-20.0%	↓
Clark	23	35	52.2%	↑	31	-11.4%	↓
Columbia	1	0	-100.0%	↓	0	0.0%	↓
Cowlitz	16	7	-56.3%	↓	13	85.7%	↑
Douglas	2	5	150.0%	↑	4	-20.0%	↓
Ferry	2	2	0.0%	→	2	0.0%	→
Franklin	7	5	-28.6%	↓	8	60.0%	↑
Garfield	2	0	-100.0%	↓	2	200.0%	↑
Grant	10	17	70.0%	↑	20	17.6%	↑
Grays Harbor	11	6	-45.5%	↓	10	66.7%	↑
Island	8	7	-12.5%	↓	5	-28.6%	↓
Jefferson	4	3	-25.0%	↓	4	33.3%	↑
King	105	107	1.9%	↑	125	16.8%	↑
Kitsap	12	11	-8.3%	↓	15	36.4%	↑
Kittitas	8	7	-12.5%	↓	3	-57.1%	↓
Klickitat	7	5	-28.6%	↓	0	-100.0%	↓
Lewis	13	12	-7.7%	↓	7	-41.7%	↓
Lincoln	3	0	-100.0%	↓	3	300.0%	↑
Mason	9	14	55.6%	↑	9	-35.7%	↓
Okanogan	9	5	-44.4%	↓	5	0.0%	→
Pacific	6	1	-83.3%	↓	1	0.0%	→
Pend Oreille	2	2	0.0%	→	3	50.0%	↑
Pierce	64	67	4.7%	↑	91	35.8%	↑
San Juan	1	0	-100.0%	↓	3	300.0%	↑
Skagit	16	17	6.3%	↑	13	-23.5%	↓
Skamania	1	6	500.0%	↑	3	-50.0%	↓
Snohomish	39	45	15.4%	↑	32	-28.9%	↓
Spokane	29	51	75.9%	↑	56	9.8%	↑
Stevens	4	4	0.0%	→	3	-25.0%	↓
Thurston	20	17	-15.0%	↓	20	17.6%	↑
Walla Walla	4	1	-75.0%	↓	4	300.0%	↑
Whatcom	14	8	-42.9%	↓	15	87.5%	↑
Whitman	4	2	-50.0%	↓	3	50.0%	↑
Yakima	32	37	15.6%	↑	47	27.0%	↑



Fatal Crashes by County in 2021



Did you know?

- ⇒ Despite the statewide increase in traffic fatalities in 2021, 17 counties (out of 39) had less, no change, or no fatalities compared to 2020.
- ⇒ When considering both numbers and percent change in 2021, traffic fatalities in Pierce County increased most rapidly.
- ⇒ Two counties, Asotin and Wahkiakum had zero traffic fatalities 2019-2021.

Data Notes:

Asotin and Wahkiakum counties are excluded from the table due to zero traffic fatalities 2019-2021. For more county-level information, visit the WTSC dashboards page— <https://wtsc.wa.gov/research-data/dashboards/>



State of the State: Washington Traffic Fatalities

Walker/Roller Fatalities in Washington State by County

	2019	2020	% Change in 2020		2021	% Change in 2021	
King	40	44	10%	↑	51	16%	↑
Pierce	15	15	0%	→	22	47%	↑
Spokane	7	12	71%	↑	16	33%	↑
Snohomish	14	15	7%	↑	14	-7%	↓
Yakima	7	5	-29%	↓	11	120%	↑
Clark	8	9	13%	↑	7	-22%	↓
Thurston	3	4	33%	↑	6	50%	↑
Kitsap	1	2	100%	↑	6	200%	↑
Cowlitz	3	1	-67%	↓	5	400%	↑
Whatcom	3	4	33%	↑	5	25%	↑
Clallam	0	1	100%	↑	3	200%	↑
Okanogan	0	0	0%	↓	3	300%	↑
Grant	0	1	100%	↑	2	100%	↑
Jefferson	0	1	100%	↑	2	100%	↑
Benton	2	0	-100%	↓	1	100%	↑
Mason	2	1	-50%	↓	1	0%	→
Franklin	0	1	100%	↑	1	0%	→
Grays Harbor	0	2	200%	↑	1	-50%	↓
Pend Oreille	0	0	0%	↓	1	100%	↑
Skagit	8	3	-63%	↓	0	-100%	↓
Island	1	0	-100%	↓	0	0%	↓
Lewis	1	2	100%	↑	0	-100%	↓
Whitman	1	0	-100%	↓	0	0%	↓

Did you know?

- ⇒ More than half of walker/roller fatalities occur in just three counties; King, Pierce and Spokane.
- ⇒ In the past three years, walker/roller fatalities in Spokane and Yakima counties have increased to double digit totals.
- ⇒ Sixteen counties have had zero walker/roller fatalities in the past three years. In 2021, twenty counties (out of 39) had zero walker/roller fatalities.

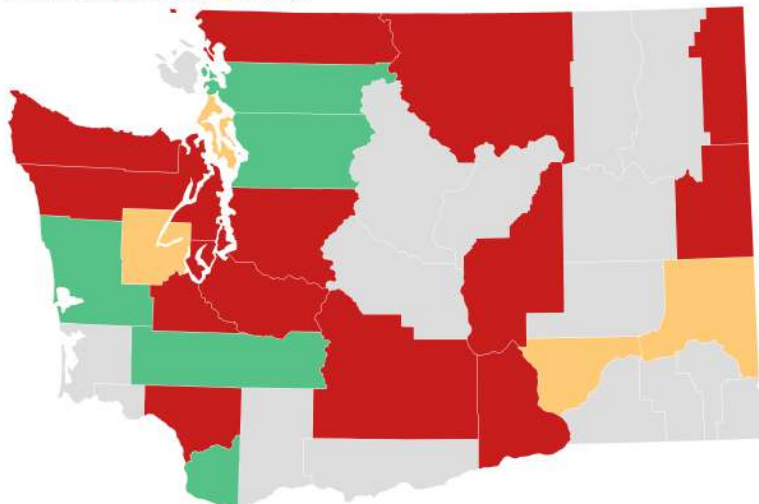


Counties with zero walker/roller fatalities 2019-2021:

- Adams
- Chelan
- Douglas
- Garfield
- Klickitat
- Pacific
- Skamania
- Walla Walla
- Aostin
- Columbia
- Ferry
- Kittitas
- Lincoln
- San Juan
- Stevens
- Wahkiakum

Walker/Roller Fatalities by County in 2021

■ Decreased ■ Increased ■ No Change



For more information, please contact (360) 725-9860. <https://wtsc.wa.gov/research-data/>

