

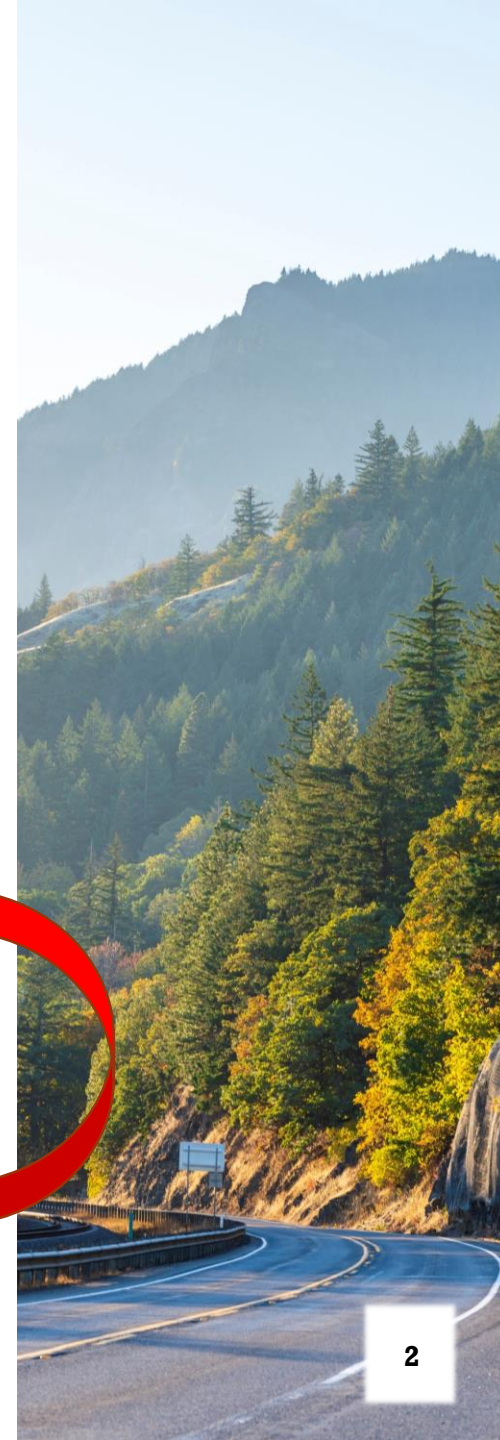
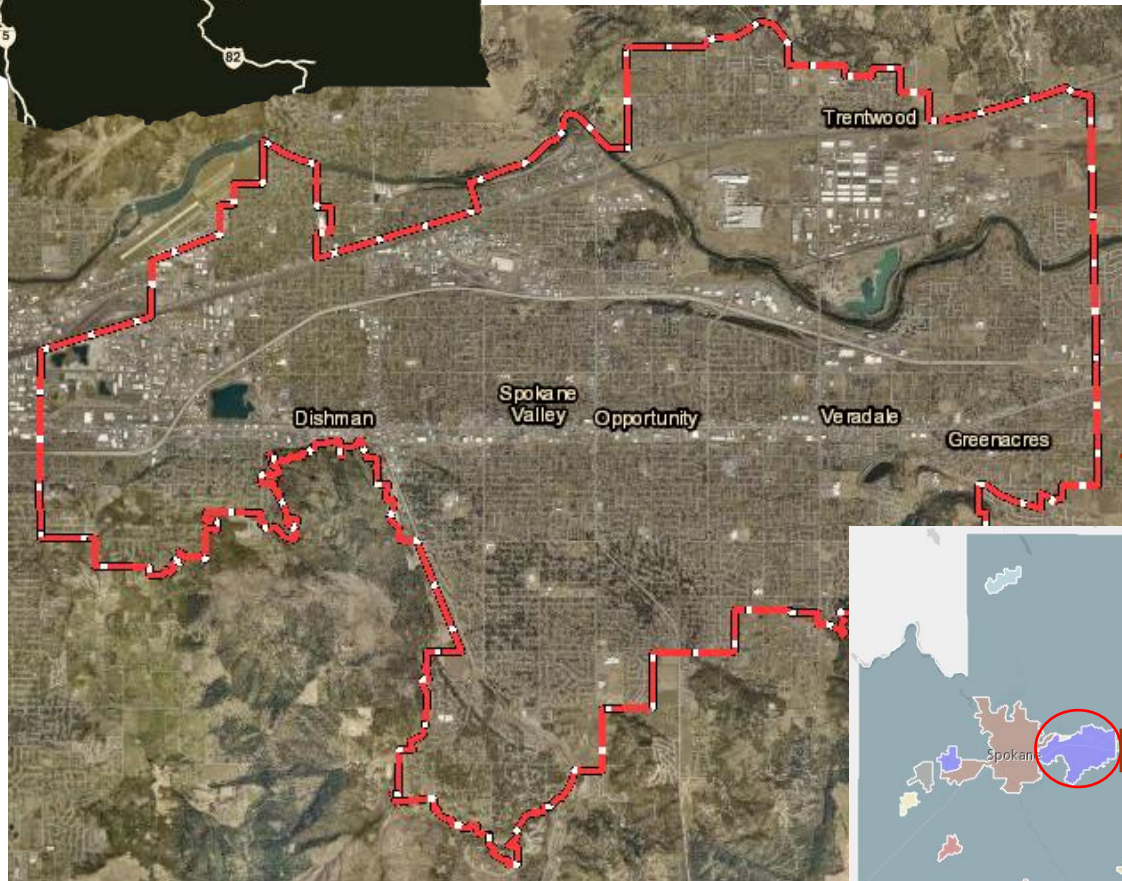


SPOKANE VALLEY TRANSPORTATION SAFETY

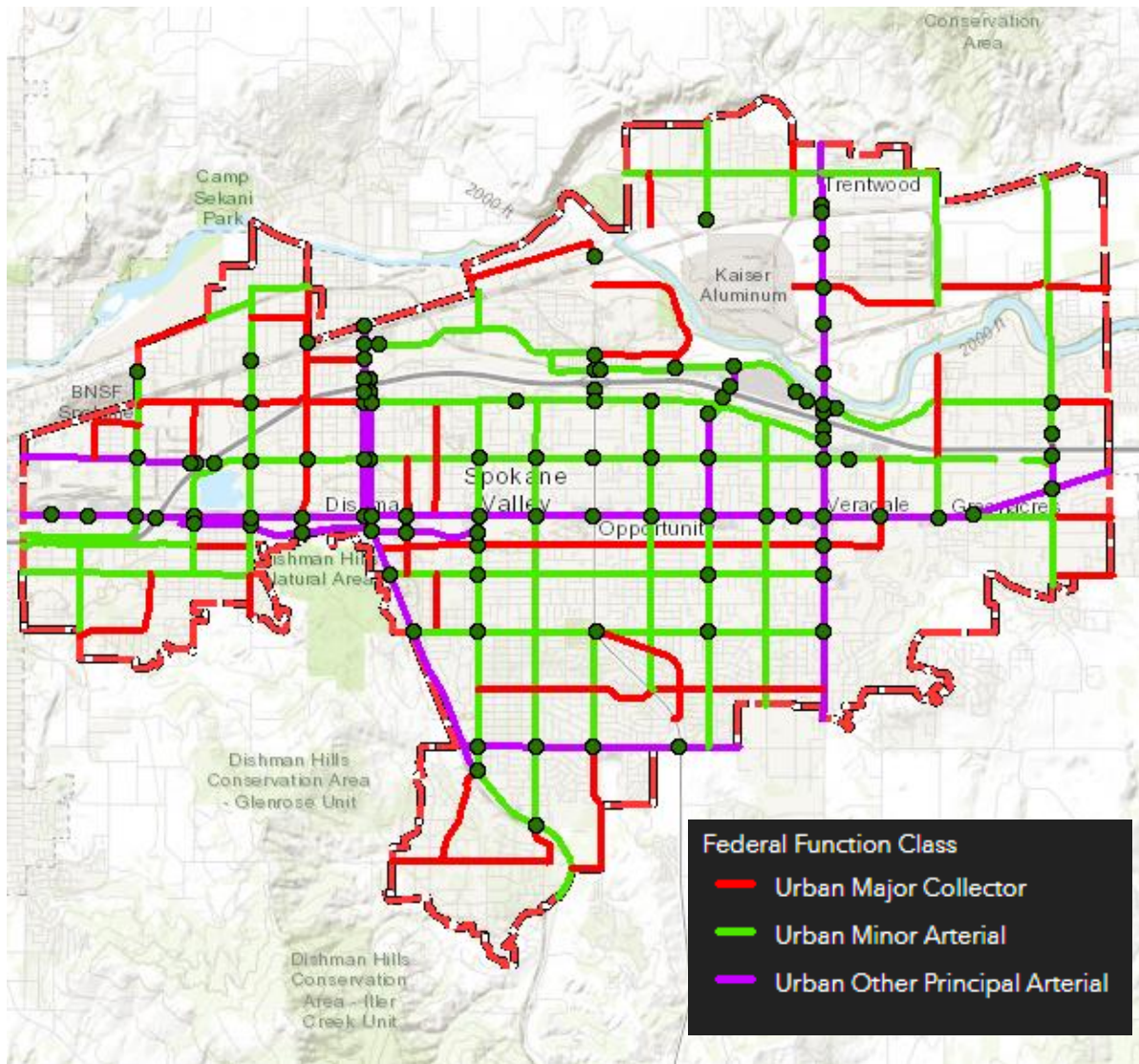
Adam Jackson, PE, Sr. Engineer – Planning & Grants
City of Spokane Valley

October 21, 2021

SPOKANE VALLEY – AN INTRODUCTION



SPOKANE VALLEY STREET NETWORK



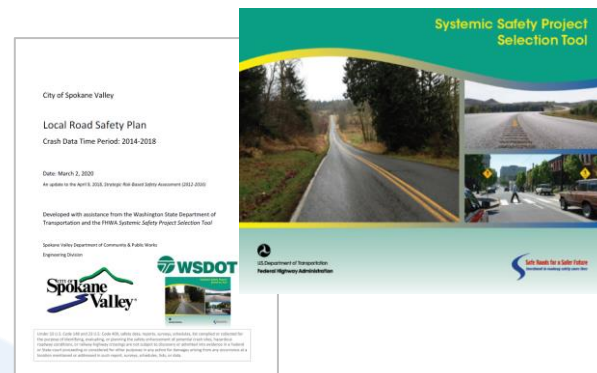
SAFETY TRENDS IN SPOKANE VALLEY

- Public Involvement
 - 500 traffic calls annually
 - Speeding
 - Lack of sidewalks
 - On street parking
- Funding Opportunities
 - WTSC
 - 2021 School Zone Beacons
 - HSIP (via WSDOT CSP)
 - 2020 Roundabout
 - 2020 Signpost reflectors
- Capital Planning
 - Always increase safety



Crash Data Review

- User behavior
- Fatal/Serious crashes
 - Hit Pedestrians
 - Angle (T) Collisions
 - Hit Fixed Object



SAFETY TRENDS IN SPOKANE VALLEY

92% of all Fatal or Serious
crashes occurred on
16% of the City's total lane
miles (arterials/collectors)

User behavior
contributes to
nearly *all* crashes.

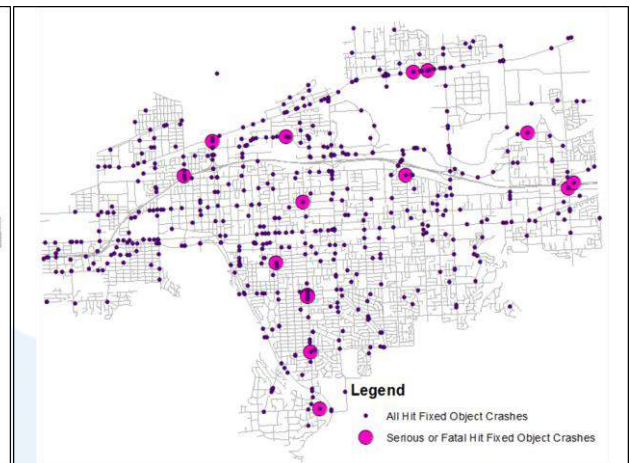
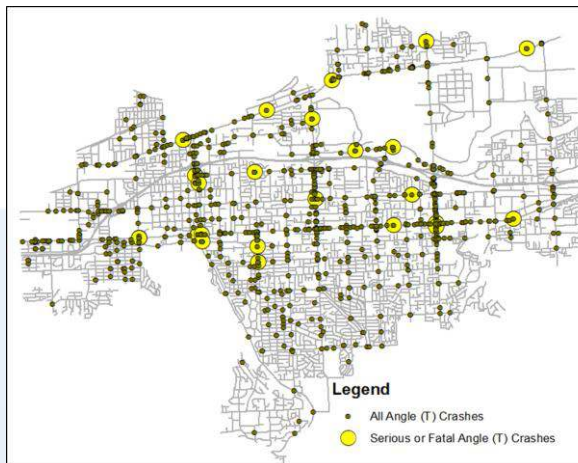
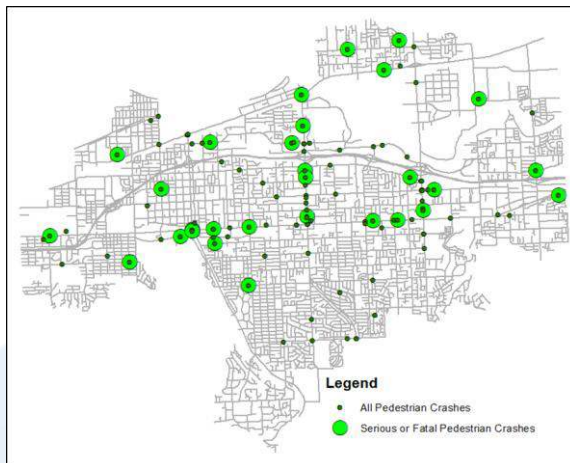
2014-2018 Study Period

108 total Fatal or Serious crashes

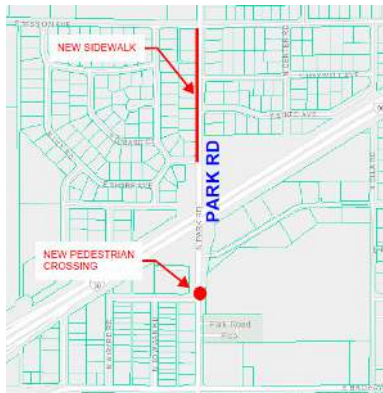
27 Hit Pedestrians

25 Angle (T) Collisions

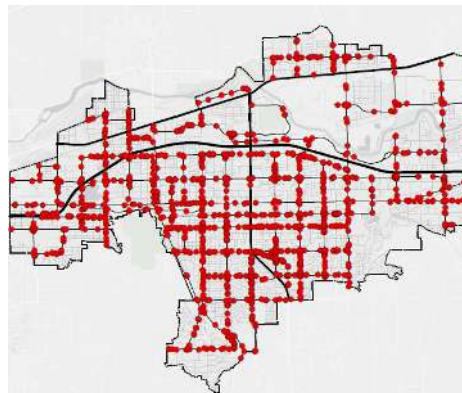
15 Hit Fixed Object Collisions



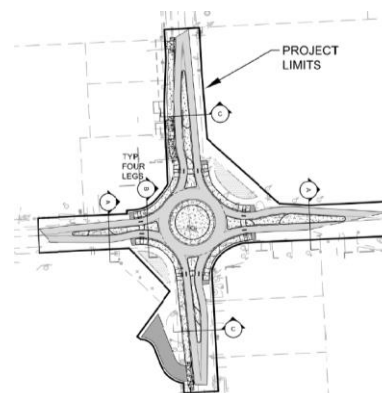
2021-2022 PRIORITIES



Park Rd. Sidewalk & Crossing



Sign Post Reflective Strips



Sprague & Barker Roundabout



Grade Separation Projects
Pines/BNSF/Trent (Top)
Barker/BNSF/Trent (Bottom)



School Zone Flashing Beacons (WTSC funded)



Pines & Mission Intersection

QUESTIONS?

ADAM JACKSON

509-720-5024

AJACKSON@SPOKANEVALLEY.ORG

