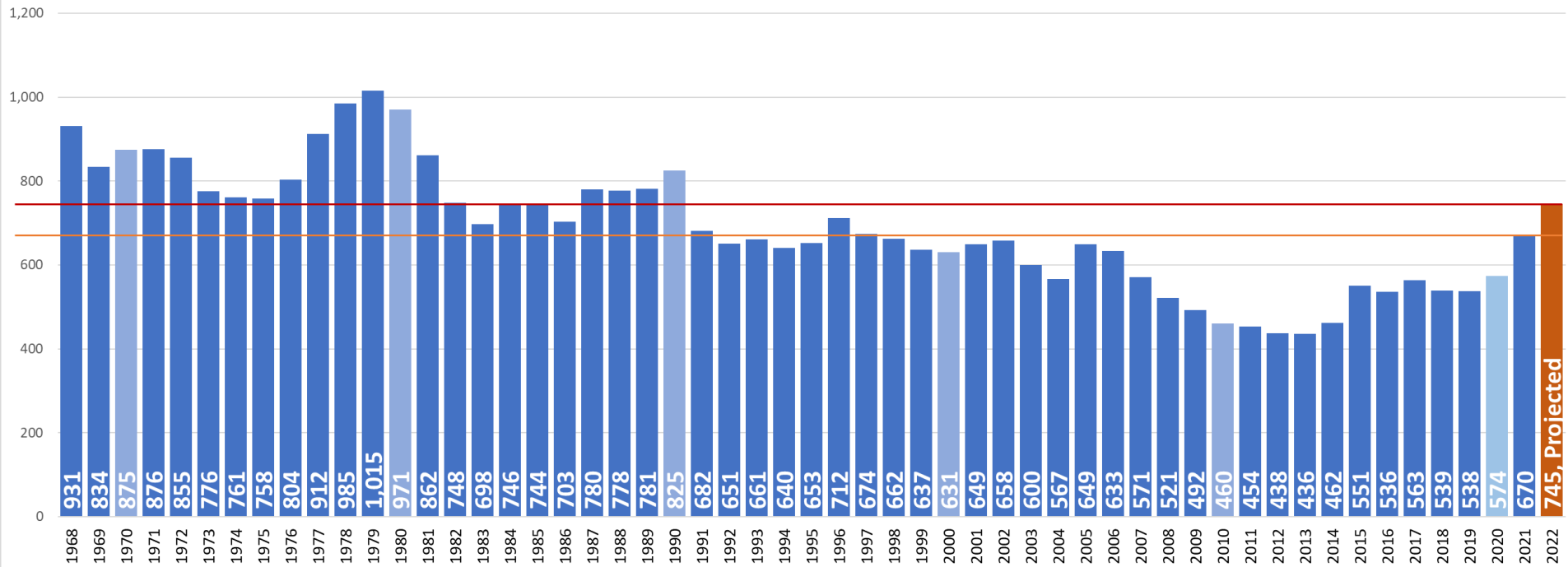




Data Updates – Highlights of 2022

Staci Hoff, Ph.D., Research Director
Washington Traffic Safety Commission
Quarterly Meeting of the WTSC
January 19, 2023

Washington State Traffic Fatalities 1968 - Present



- If December 2022 = 2020/2021 then projected 2022 total fatalities is 745
- Highest number of fatalities since 1990
- Fatalities have not consistently remained over 700 since the 1980s
- Washington has not experienced year-over-year increases in fatalities at this rate since the 1970s

Table 3: Estimated Fatalities in the First 9 Months of 2022, and the Percentage Change in Estimated Fatalities From the Projected Fatalities in the First 9 Months of 2021, by State. The States' Estimates of the Fatality Rate Per 100 M VMT in the First 9 Months of 2021 and 2022 Are Also Presented.

State	Fatalities			Fatality Rate		State	Fatalities			Fatality Rate	
	2021	2022	Percent Change	2021	2022		2021	2022	Percent Change	2021	2022
Alabama	738	738	0.0%	1.34	1.36	Nebraska	161	198	23.0%	1.01	1.26
Alaska	49	59	20.4%	1.10	1.32	Nevada	291	281	-3.4%	1.37	1.30
Arizona	869	885	1.8%	1.58	1.55	New Hampshire	92	109	18.5%	0.92	1.07
Arkansas	511	474	-7.2%	1.85	1.75	New Jersey	490	542	10.6%	0.88	0.94
California	3,250	3,178	-2.2%	1.29	1.24	New Mexico	364	354	-2.7%	1.81	1.75
Colorado	506	572	13.0%	1.26	1.41	New York	833	865	3.8%	0.99	1.01
Connecticut	243	284	16.9%	0.97	1.11	North Carolina	1,234	1,238	0.3%	1.43	1.43
Delaware	88	109	23.9%	1.25	1.54	North Dakota	88	80	-9.1%	1.23	1.14
District of Columbia	29	23	-20.7%	1.11	0.88	Ohio	1,025	963	-6.0%	1.20	1.13
Florida	2,796	2,762	-1.2%	1.59	1.50	Oklahoma	560	470	-16.1%	1.64	1.38
Georgia	1,303	1,353	3.8%	1.36	1.39	Oregon	456	428	-6.1%	1.68	1.58
Hawaii	64	91	42.2%	0.85	1.15	Pennsylvania	888	897	1.0%	1.23	1.23
Idaho	199	164	-17.6%	1.35	1.12	Rhode Island	51	39	-23.5%	0.89	0.64
Illinois	1,009	975	-3.4%	1.31	1.24	South Carolina	878	810	-7.7%	1.98	1.78
Indiana	705	743	5.4%	1.10	1.16	South Dakota	121	87	-28.1%	1.44	1.07
Iowa	267	260	-2.6%	1.08	1.06	Tennessee	998	1,006	0.8%	1.63	1.61
Kansas	308	301	-2.3%	1.38	1.34	Texas	3,335	3,349	0.4%	1.57	1.52
Kentucky	575	550	-4.3%	1.50	1.42	Utah	239	247	3.3%	0.94	0.96
Louisiana	704	638	-9.4%	1.77	1.57	Vermont	56	64	14.3%	1.11	1.23
Maine	115	132	14.8%	1.04	1.19	Virginia	665	729	9.6%	1.06	1.14
Maryland	393	403	2.5%	0.96	0.95	Washington	487	591	21.4%	1.05	1.26
Massachusetts	317	328	3.5%	0.71	0.71	West Virginia	193	181	-6.2%	1.46	1.40
Michigan	864	840	-2.8%	1.20	1.14	Wisconsin	449	455	1.3%	0.93	0.94
Minnesota	364	352	-3.3%	0.85	0.81	Wyoming	91	97	6.6%	1.11	1.21
Mississippi	584	543	-7.0%	1.80	1.72	U.S. Total*	31,850	31,785	-0.2%	1.32	1.30
Missouri	782	777	-0.6%	1.31	1.30	Puerto Rico	249	194	-22.1%	-	-
Montana	175	171	-2.3%	1.68	1.65						

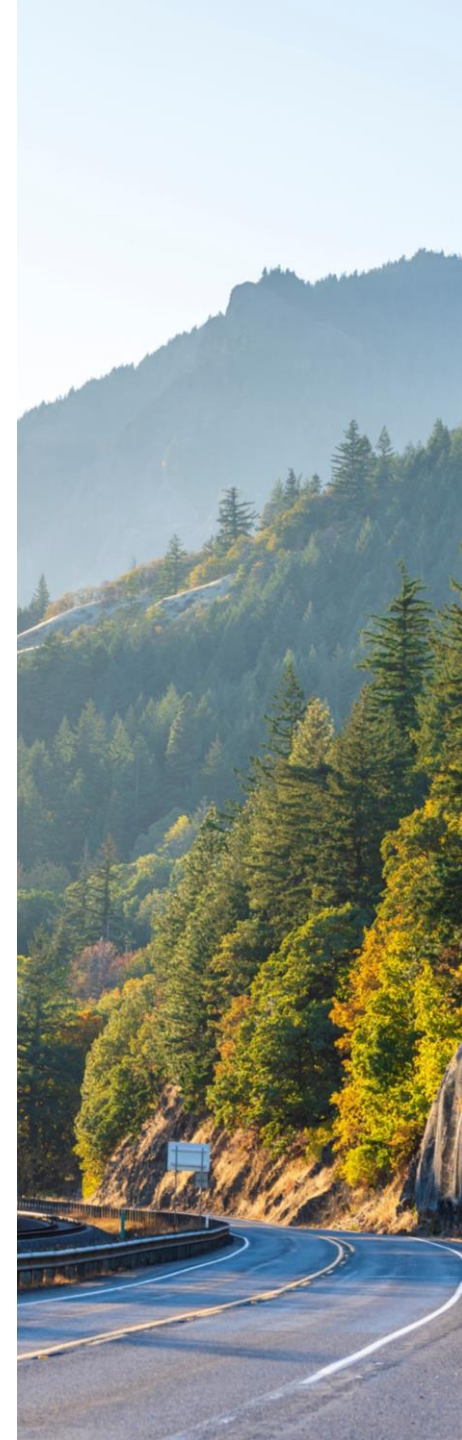


Table 3: Estimated Fatalities in the First 9 Months of 2022, and the Percentage Change in Estimated Fatalities From the Projected Fatalities in the First 9 Months of 2021, by State. The States' Estimates of the Fatality Rate Per 100 M VMT in the First 9 Months of 2021 and 2022 Are Also Presented.

State	Fatalities			Fatality Rate		State	Fatalities			Fatality Rate	
	2021	2022	Percent Change	2021	2022		2021	2022	Percent Change	2021	2022
Alabama	738	738	0.0%	1.34	1.36	Nebraska	161	198	23.0%	1.01	1.26
Alaska	49	59	20.4%	1.10	1.32	Nevada	291	281	-3.4%	1.37	1.30
Arizona	869	885	1.8%	1.58	1.55	New Hampshire	92	109	18.5%	0.92	1.07
Arkansas	511	474	-7.2%	1.85	1.75	New Jersey	490	542	10.6%	0.88	0.94
California	3,250	3,178	-2.2%	1.29	1.24	New Mexico	364	354	-2.7%	1.81	1.75
Colorado	506	572	13.0%	1.26	1.41	New York	833	865	3.8%	0.99	1.01
Connecticut	243	284	16.9%	0.97	1.11	North Carolina	1,234	1,238	0.3%	1.43	1.43
Delaware	88	109	23.9%	1.25	1.54	North Dakota	88	80	-9.1%	1.23	1.14
District of Columbia	29	23	-20.7%	1.11	0.88	Ohio	1,025	963	-6.0%	1.20	1.13
Florida	2,796	2,762	-1.2%	1.59	1.50	Oklahoma	560	470	-16.1%	1.64	1.38
Georgia	1,303	1,353	3.8%	1.36	1.39	Oregon	456	428	-6.1%	1.68	1.58
Hawaii	64	91	42.2%	0.85	1.15	Pennsylvania	888	897	1.0%	1.23	1.23
Idaho	199	164	-17.6%	1.35	1.12	Rhode Island	51	39	-23.5%	0.89	0.64
Illinois	1,009	975	-3.4%	1.31	1.24	South Carolina	878	810	-7.7%	1.98	1.78
Indiana	705	743	5.4%	1.10	1.16	South Dakota	121	87	-28.1%	1.44	1.07
Iowa	267	260	-2.6%	1.08	1.06	Tennessee	998	1,006	0.8%	1.63	1.61
Kansas	308	301	-2.3%	1.38	1.34	Texas	3,335	3,349	0.4%	1.57	1.52
Kentucky	575	550	-4.3%	1.50	1.42	Utah	239	247	3.3%	0.94	0.96
Louisiana	704	638	-9.4%	1.77	1.57	Vermont	56	64	14.3%	1.11	1.23
Maine	115	132	14.8%	1.04	1.19	Virginia	665	729	9.6%	1.06	1.14
Maryland	393	403	2.5%	0.96	0.95	Washington	487	591	21.4%	1.05	1.26
Massachusetts	317	328	3.5%	0.71	0.71	West Virginia	193	181	-6.2%	1.46	1.40
Michigan	864	840	-2.8%	1.20	1.14	Wisconsin	449	455	1.3%	0.93	0.94
Minnesota	364	352	-3.3%	0.85	0.81	Wyoming	91	97	6.6%	1.11	1.21
Mississippi	584	543	-7.0%	1.80	1.72	U.S. Total*	31,850	31,785	-0.2%	1.32	1.30
Missouri	782	777	-0.6%	1.31	1.30	Puerto Rico	249	194	-22.1%	-	-
Montana	175	171	-2.3%	1.68	1.65						

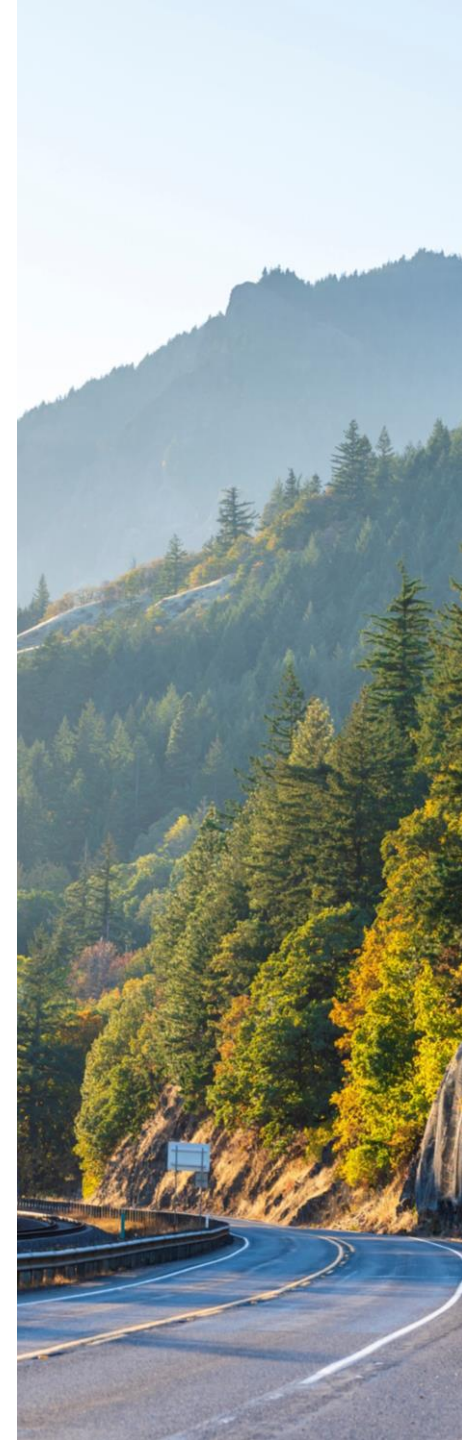
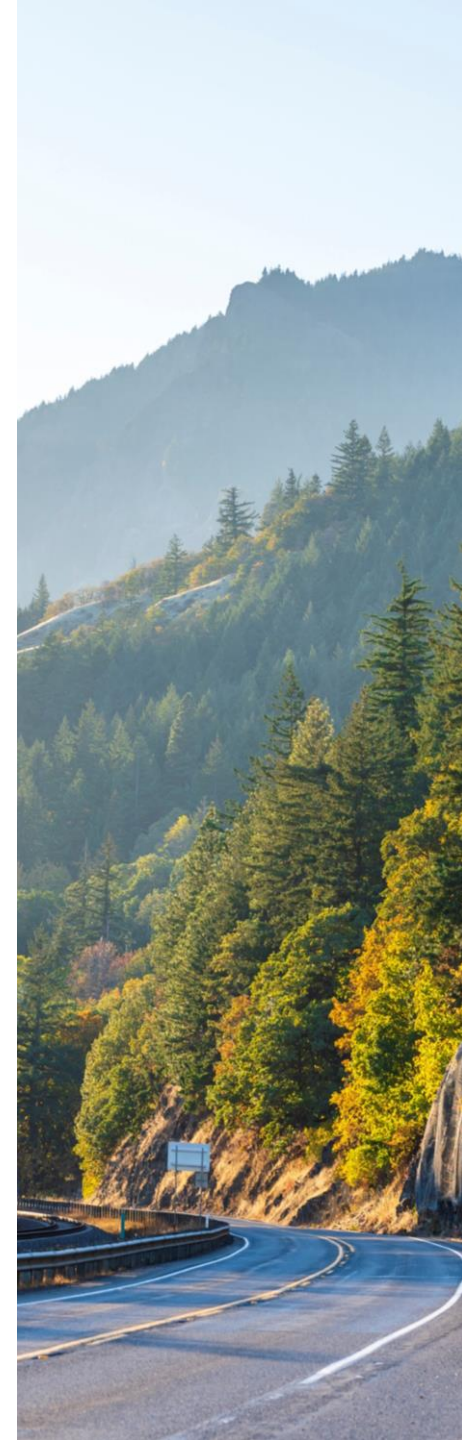


Table 3: Estimated Fatalities in the First 9 Months of 2022, and the Percentage Change in Estimated Fatalities From the Projected Fatalities in the First 9 Months of 2021, by State. The States' Estimates of the Fatality Rate Per 100 M VMT in the First 9 Months of 2021 and 2022 Are Also Presented.

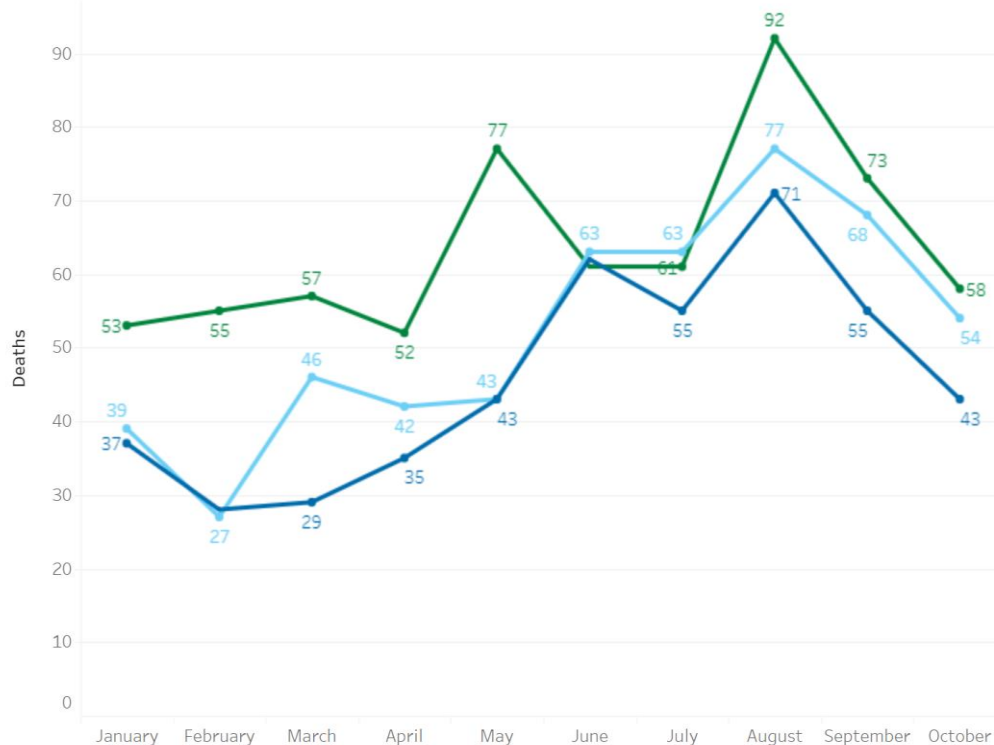
State	Fatalities			Fatality Rate		State	Fatalities			Fatality Rate	
	2021	2022	Percent Change	2021	2022		2021	2022	Percent Change	2021	2022
Alabama	738	738	0.0%	1.34	1.36	Nebraska	161	198	23.0%	1.01	1.26
Alaska	49	59	20.4%	1.10	1.32	Nevada	291	281	-3.4%	1.37	1.30
Arizona	869	885	1.8%	1.58	1.55	New Hampshire	92	109	18.5%	0.92	1.07
Arkansas	511	474	-7.2%	1.85	1.75	New Jersey	490	542	10.6%	0.88	0.94
California	3,250	3,178	-2.2%	1.29	1.24	New Mexico	364	354	-2.7%	1.81	1.75
Colorado	506	572	13.0%	1.26	1.41	New York	833	865	3.8%	0.99	1.01
Connecticut	243	284	16.9%	0.97	1.11	North Carolina	1,234	1,238	0.3%	1.43	1.43
Delaware	88	109	23.9%	1.25	1.54	North Dakota	88	80	-9.1%	1.23	1.14
District of Columbia	29	23	-20.7%	1.11	0.88	Ohio	1,025	963	-6.0%	1.20	1.13
Florida	2,796	2,762	-1.2%	1.59	1.50	Oklahoma	560	470	-16.1%	1.64	1.38
Georgia	1,303	1,353	3.8%	1.36	1.39	Oregon	456	428	-6.1%	1.68	1.58
Hawaii	64	91	42.2%	0.85	1.15	Pennsylvania	888	897	1.0%	1.23	1.23
Idaho	199	164	-17.6%	1.35	1.12	Rhode Island	51	39	-23.5%	0.89	0.64
Illinois	1,009	975	-3.4%	1.31	1.24	South Carolina	878	810	-7.7%	1.98	1.78
Indiana	705	743	5.4%	1.10	1.16	South Dakota	121	87	-28.1%	1.44	1.07
Iowa	267	260	-2.6%	1.08	1.06	Tennessee	998	1,006	0.8%	1.63	1.61
Kansas	308	301	-2.3%	1.38	1.34	Texas	3,335	3,349	0.4%	1.57	1.52
Kentucky	575	550	-4.3%	1.50	1.42	Utah	239	247	3.3%	0.94	0.96
Louisiana	704	638	-9.4%	1.77	1.57	Vermont	56	104	+104 Fatalities	1.23	1.23
Maine	115	132	14.8%	1.04	1.19	Virginia	665	729	10.2%	1.06	1.14
Maryland	393	403	2.5%	0.96	0.95	Washington	487	591	21.4%	1.05	1.26
Massachusetts	317	328	3.5%	0.71	0.71	West Virginia	193	181	-6.2%	1.46	1.40
Michigan	864	840	-2.8%	1.20	1.14	Wisconsin	449	455	1.3%	0.93	0.94
Minnesota	364	352	-3.3%	0.85	0.81	Wyoming	91	97	6.6%	1.11	1.21
Mississippi	584	543	-7.0%	1.80	1.72	U.S. Total*	31,850	31,785	-0.2%	1.32	1.30
Missouri	782	777	-0.6%	1.31	1.30	Puerto Rico	249	194	-22.1%	-	-
Montana	175	171	-2.3%	1.68	1.65						



NSC PRELIMINARY MONTHLY ESTIMATES THROUGH OCT 2022

Preliminary Monthly State Motor Vehicle Fatality Estimates, 2020-2022

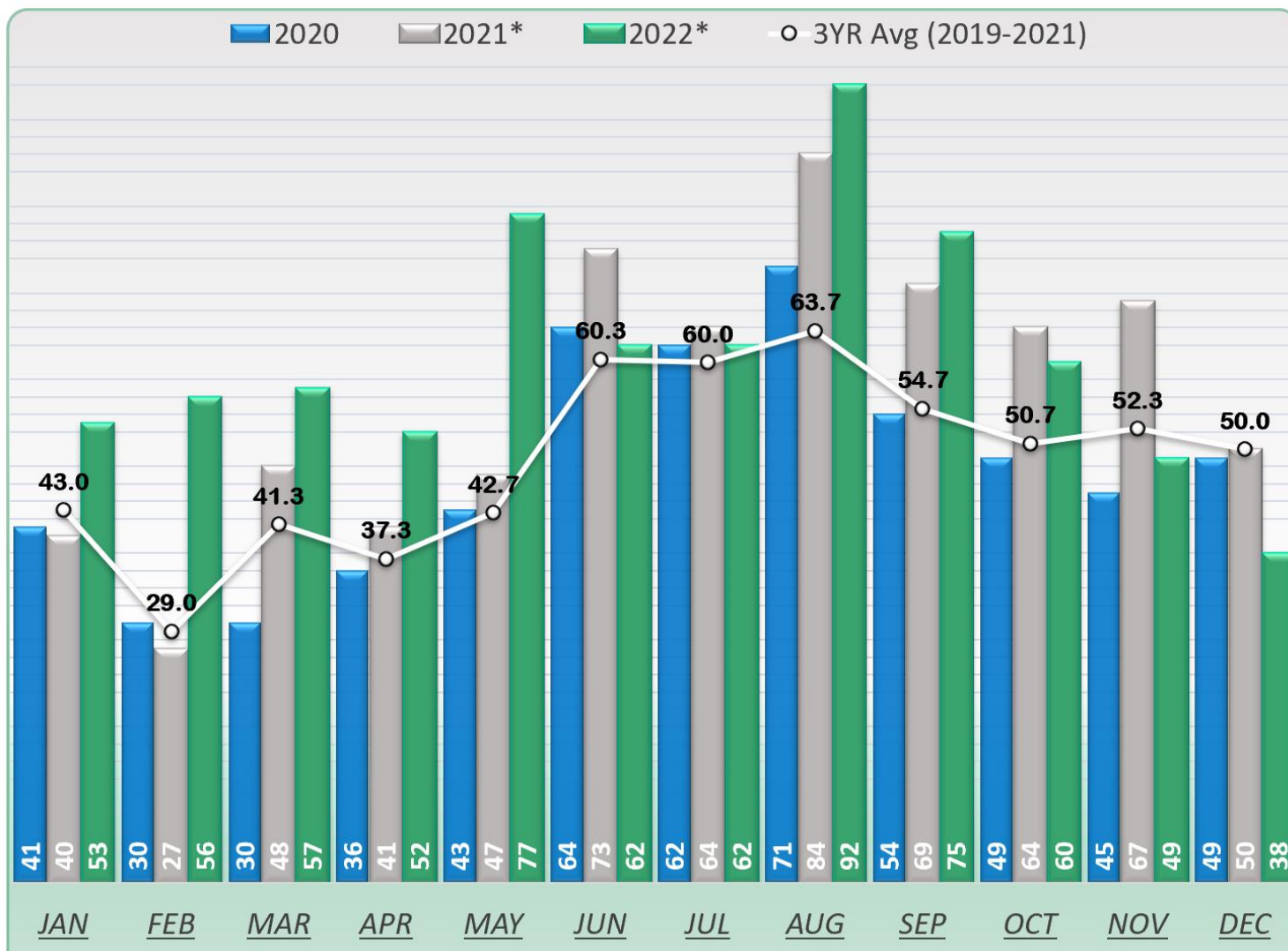
State: ■ 2020 ■ 2021 ■ 2022



Nine states experienced an increase of 15% or greater compared to 2021:

- Washington (+117 deaths, +22%)
- Maine (+23 deaths, +19%)
- New Hampshire (+17 deaths, +17%)
- Alaska (+9 deaths, +17%)
- Wyoming (+15 deaths, +16%)
- Nebraska (+31 deaths, +16%)
- Colorado (+72 deaths, +13%)
- Indiana (+89 deaths, +12%)
- Vermont (+7 deaths, +11%)

WTSC MONTHLY FATAL CRASH COUNTS



WHAT IS HAPPENING?

Factor	2019	2020	%Diff	2021*	%Diff	2022**	%Diff
Fatalities	538	574	+6.7%	674	+17.4%	745	+10.5%
Serious Injuries	2,253	2,429	+7.8%	2,921	+20.3%	3,035	+3.9%
Any Impairment	294	340	+15.6%	412	+21.2%	****	+1.3%***
Pedestrians	107	110	+2.8%	145	+31.8%	122	-15.7%
Motorcyclists	95	93	-2.1%	93	0%	129	+38.7%
Unrestrained	108	110	+1.9%	152	+38.2%	162	+6.6%
Speeding	152	173	+13.8%	206	+19.1	244	+18.4%
Distraction	127	104	-18.1%	128	+23.1%	111	-13.3%
YD 16-25 Involved	148	162	+9.5%	214	+32.1%	188	-12.1%

*WTSC 2021 Fatalities as of October 2022 <https://wtsc.wa.gov/research-data/dashboards/>

**WSDOT as of January 16, 2023 <https://remoteapps.wsdot.wa.gov/highwaysafety/collision/data/portal/public/>

***Estimated based on YTD police-reported impairment involvement

****Data incomplete due to pending toxicology investigations

Questions