



TRAFFIC SAFETY COMMISSION

Washington Traffic Survey 2023

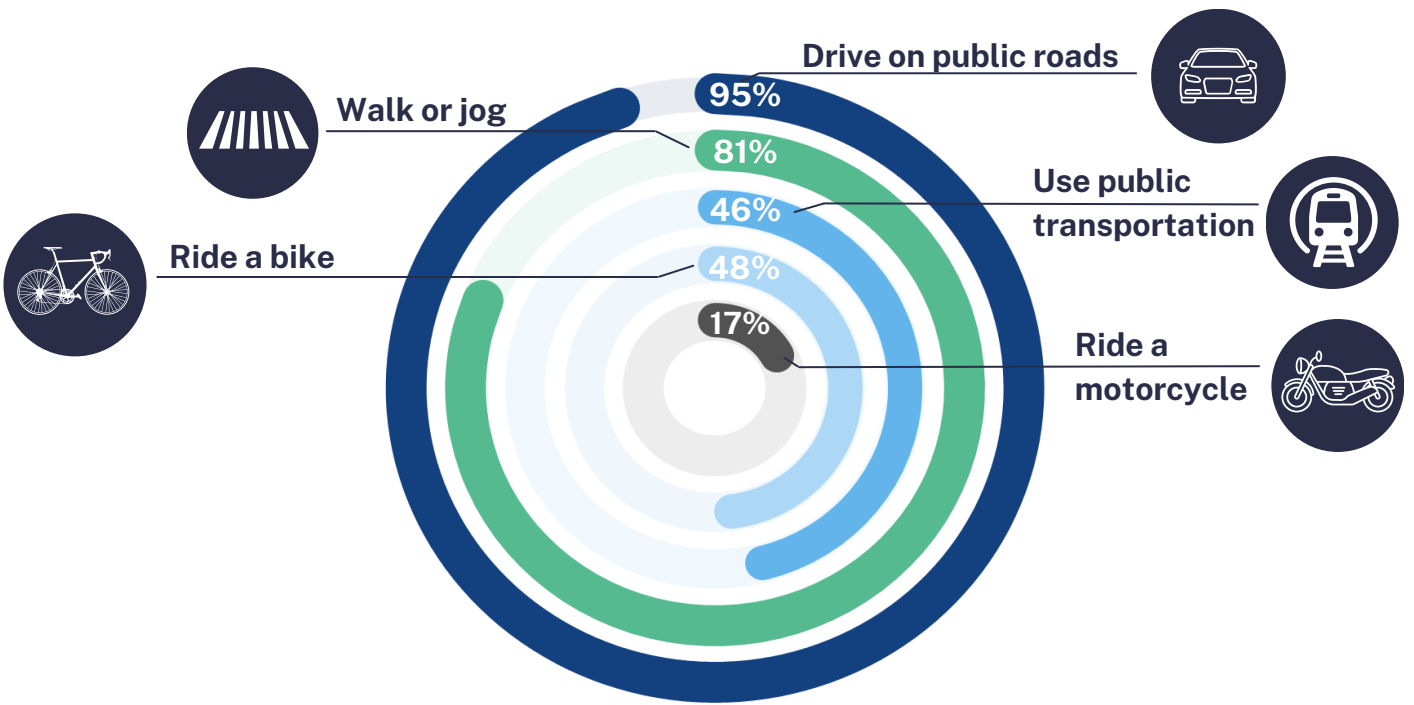
The Washington (WA) Traffic Safety Commission (WTSC) has conducted a statewide survey of adults aged 18 and over. This research aims to inform statewide planning and evaluation of traffic safety programs.

This infographic provides insight into this year's findings, covering road usage patterns, perceived roadway risks, community beliefs, and pedestrian and cyclist experiences on public roads.

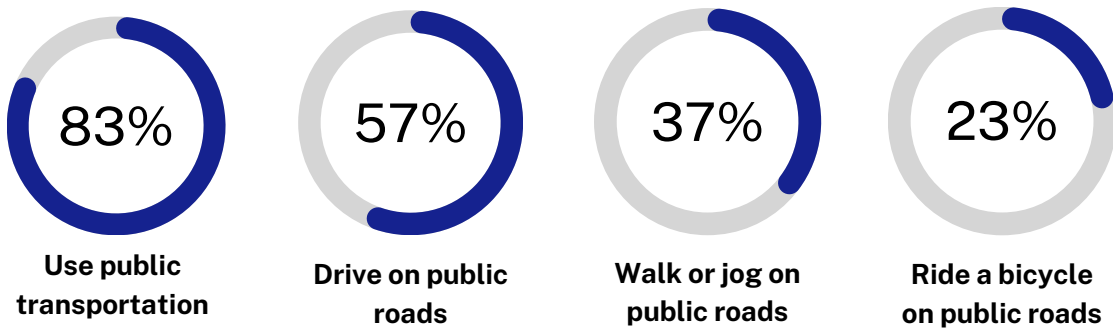
REGION 1: Clallam & Jefferson Counties

ROAD USE

How do people use public roads?



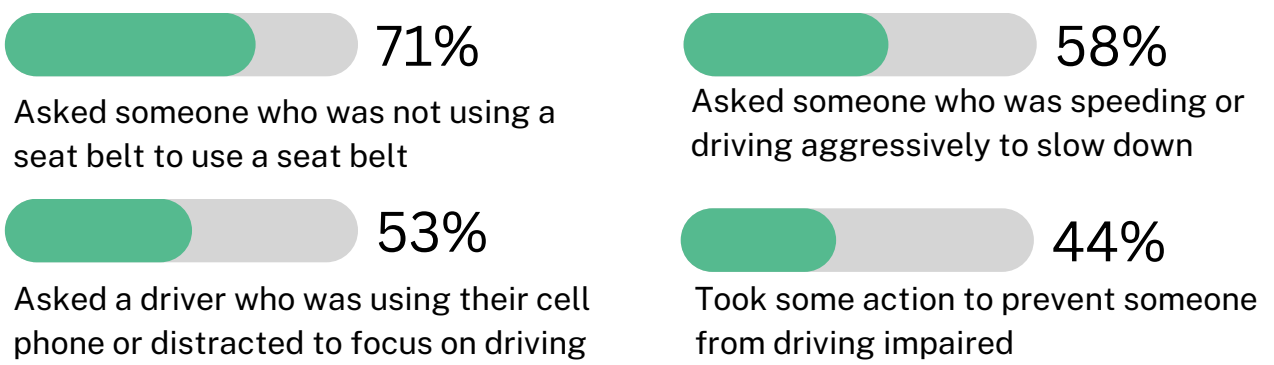
Adults who feel it is safe to...



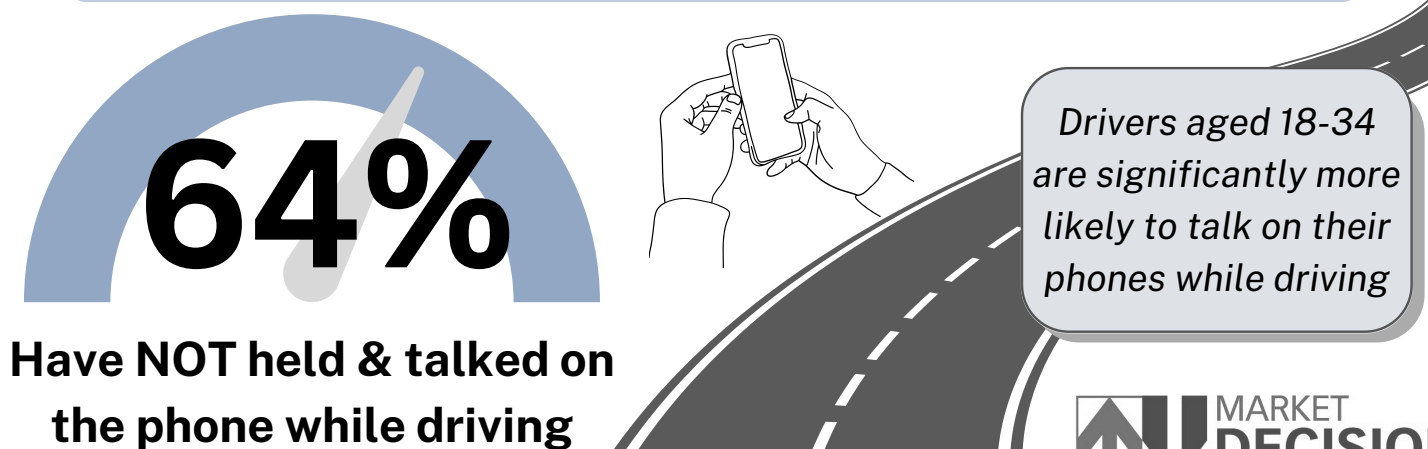
Belief in Zero Tolerance for Road Harm



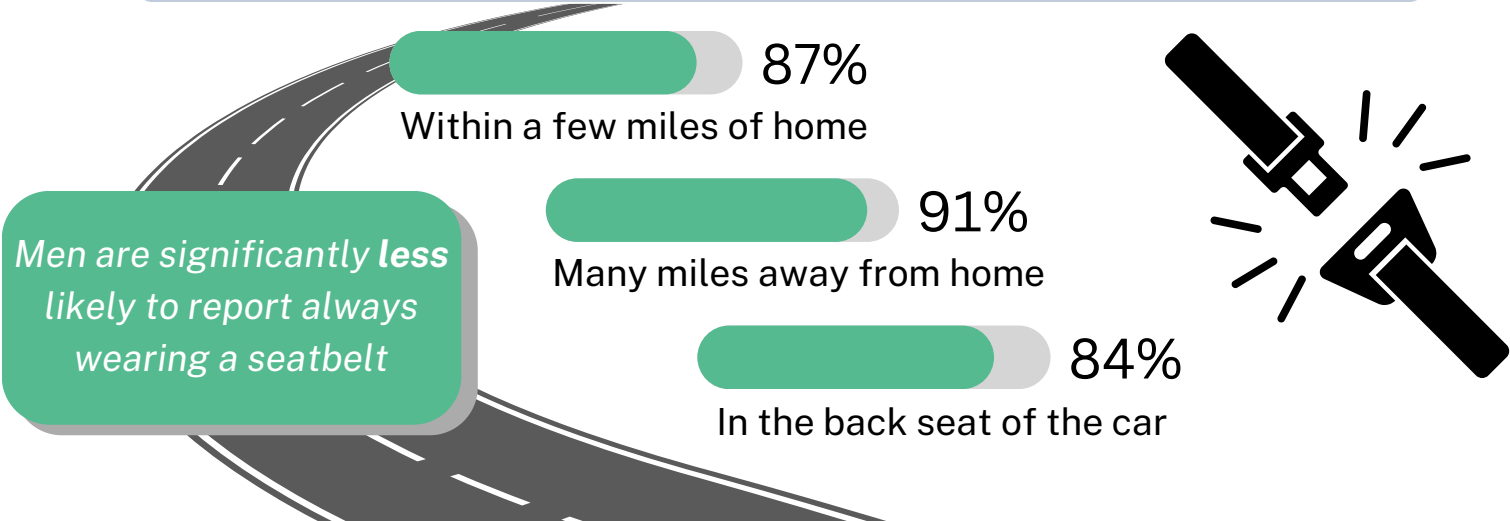
Public Interventions on Unsafe Driving Practices



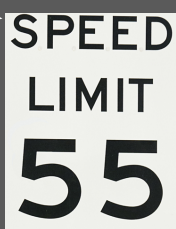
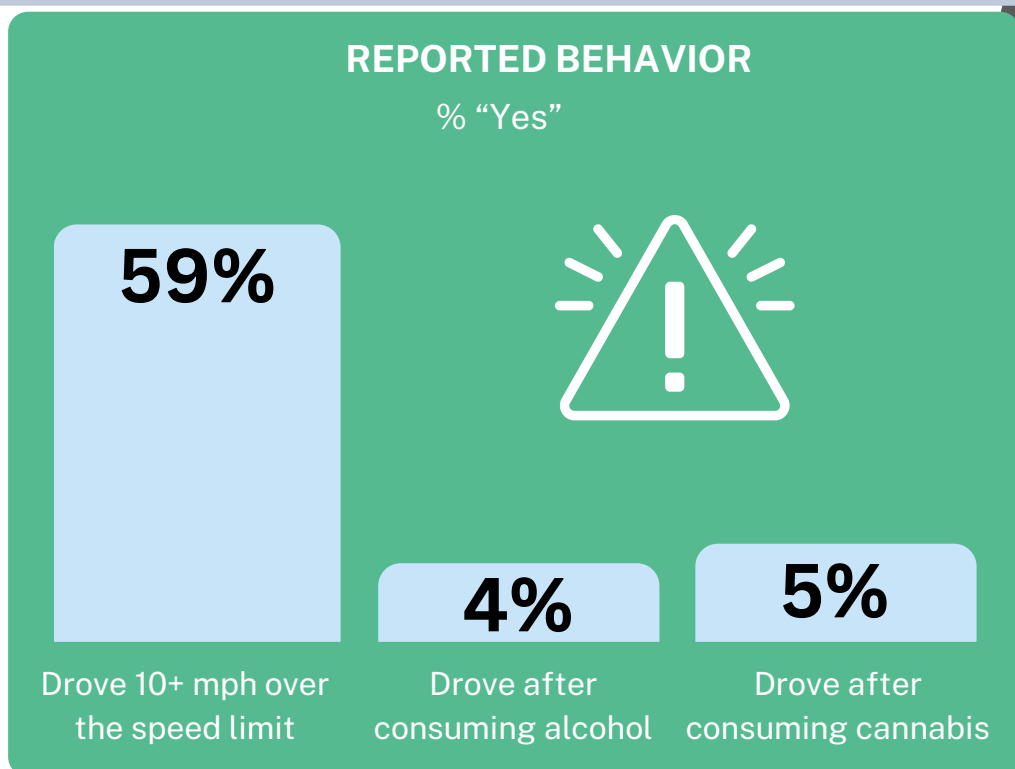
Phone Use While Driving



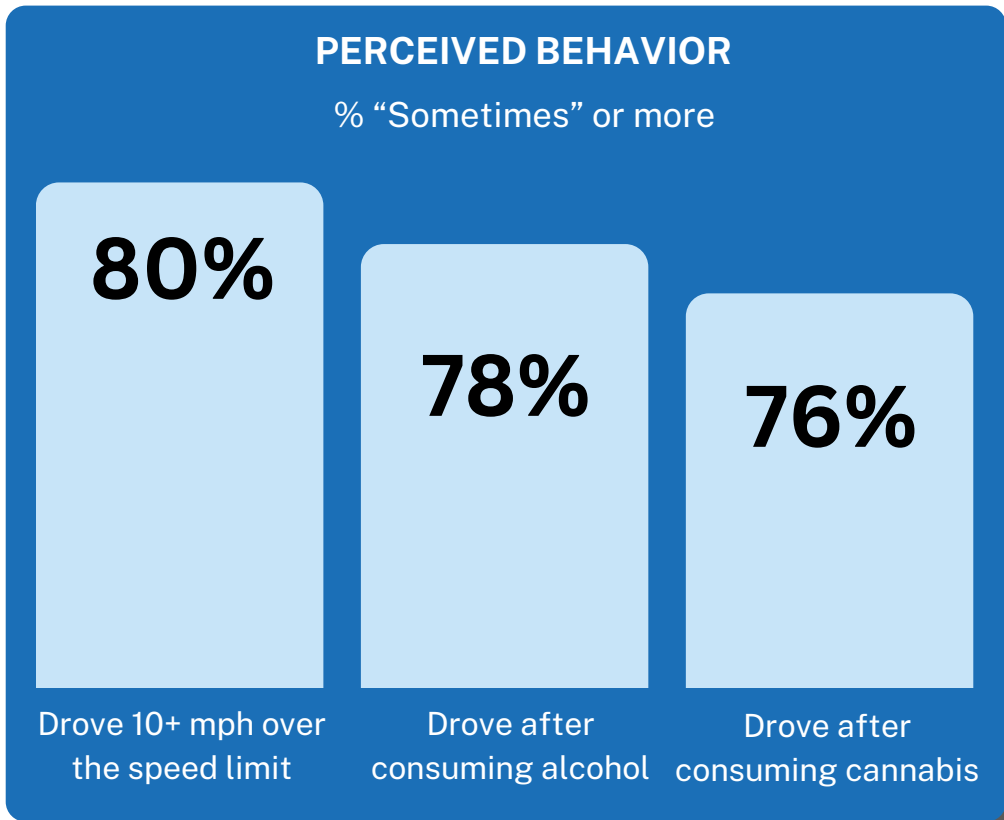
Where and when adults consistently buckle up



Self-Reported High-Risk Driving Behavior



Perceived Frequency of High-Risk Driving Behavior in Community



Few drivers admit to driving under the influence, yet a majority suspect it's common in their community

Most commonly reported experiences involving pedestrians and cyclists

Pedestrian and cyclists' experiences on public roads 

Drivers' experiences around pedestrians and bicyclists 