



High Risk Driver Behavior—Arlington Elementary

Driver Behavior

During Active School Zone Times (334 Drivers)

- ⇒ Median speed = 26 mph
 - *A.M. School Zone = 21 mph
 - *P.M. School Zone = 29 mph
- ⇒ Maximum Speed Recorded = 46 mph
 - *A.M. School Zone = 46 mph
 - *P.M. School Zone = 38 mph
- ⇒ Distracted Drivers = 29 (9%)
- ⇒ Front Seat Passengers Unbelted = 24 (7%)

During Regular Posted Speed Times (3,442 Drivers)

- ⇒ Median speed = 28 mph
- ⇒ Maximum Speed Recorded = 53 mph
- ⇒ Distracted Drivers = 189 (9%)
- ⇒ Front Seat Passengers Unbelted = 185 (8%)

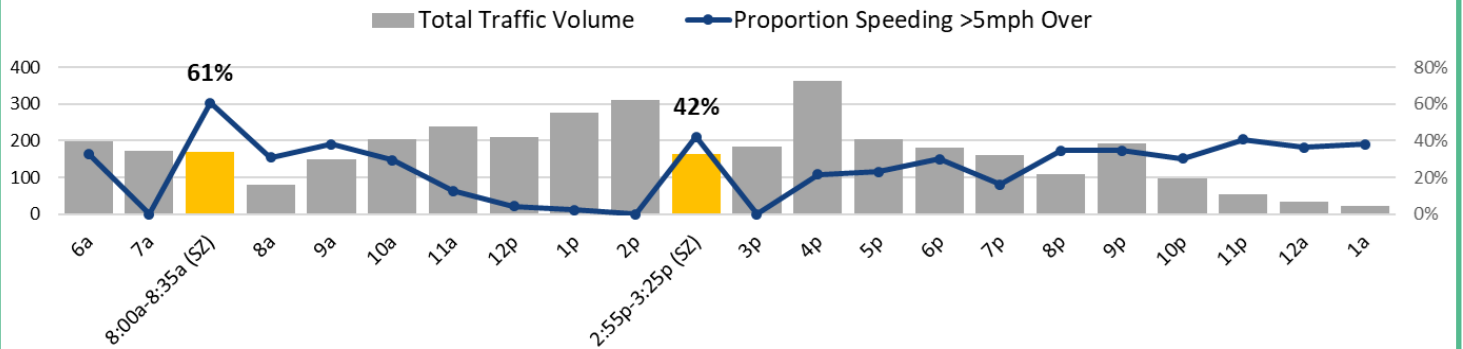


Driver behavior data was collected on N. Smith St. within the school zone near E. Frances Ave. This site has flashing beacons indicating the active school zone (20 mph) 8:00—8:35 a.m. and 2:55—3:25 p.m. The regular posted speed is 35 mph.

Overall, speeding (>5 mph over) is high at this location. Nearly one-third of drivers were traveling greater than 40 mph during non-school zone times and almost two-thirds traveled greater than 25 mph during the morning school zone. There was less speeding during the afternoon school zone but still high as 42 percent of drivers were traveling greater than 25 mph.

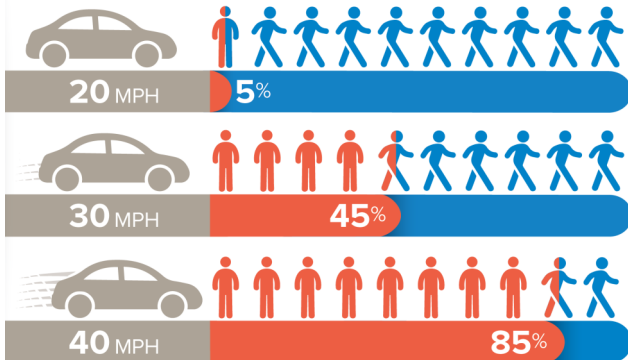
Arlington Elementary (N. Smith St.)

(Regular Posted Speed = 35mph School Zone Speed Limit = 20mph)



If hit by a car traveling:

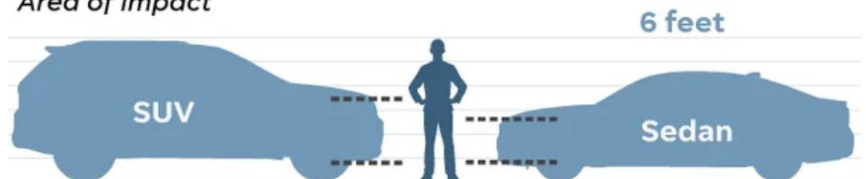
● Fatality ● Person survives collision



Size does matter

SUV front ends are taller, so they strike pedestrians higher on their bodies. That means they are more likely to kill a pedestrian than a car that would strike a person's leg.

Area of impact



SOURCE Free Press research; USA TODAY



Driver Behavior in School Zones—Arlington Elementary

Traffic sensors collected speed data from 6:00 a.m. until 1 a.m. (20 hours). In addition to speed, vehicle type, driver distraction, and front seat occupant seat belt use were collected from 7:00 a.m. until 5:00 p.m. (10 hours).

Three of every four drivers in the school zone were traveling greater than 20 mph, with an alarming one-quarter of speeding drivers traveling greater than 35 mph in the active school zone. Speeding was worse in frequency and intensity during the morning school zone with one-fifth of speeding drivers traveling over 40 mph.

Driver Speeding Behavior—N. Smith St.			How fast are SPEEDING DRIVERS going?					
Posted Speed/ Vehicle Action	Total Driver Observations (n=)	Speeding Driver	Speeding 1-5 mph over	Speeding 6-10 mph over	Speeding 11-15 mph over	Speeding 15-20 mph over	Speeding 21-25 mph over	Speeding 25+ mph over
Regular Posted Speed Limit = 35 mph	3,442	30% (n=1,020)	38%	38%	20%	4%	0%	0%
			387	391	206	36	0	0
School Zone Flashing Beacons = 20mph	334	74% (n=246)	30%	11%	31%	11%	13%	0%
			74	27	77	28	32	0
School Zone Speeding Behavior								
A.M. School Zone (8:00 a.m.-8:35 a.m.)	170	95% (n=162)	36%	11%	19%	9%	20%	0%
			59	18	30	15	32	0
P.M. School Zone (2:55 p.m.-3:25 p.m.)	164	51% (n=84)	18%	11%	56%	15%	0%	0%
			15	9	47	13	0	0
Speeding Behavior by Vehicle Type (Collected 7:00 a.m.—5:00 p.m.)								
Bus	10	60% (n=6)	50%	0%	17%	17%	17%	0%
			3	0	1	1	1	0
Pickup Truck	326	30% (n=98)	44%	31%	20%	4%	1%	0%
			43	30	20	4	1	0
Sedan	1,023	31% (n=318)	42%	26%	22%	4%	5%	0%
			132	82	69	13	16	0
SUV	728	30% (n=222)	45%	31%	15%	5%	4%	0%
			99	68	34	10	9	0
Van	439	28% (n=122)	42%	30%	20%	5%	4%	0%
			51	36	24	6	5	0
Speeding Behavior by Light Conditions (All Times)								
Daylight (6:45a-4:24p)	2,344	30% (n=711)	44%	25%	21%	5%	5%	0%
			310	178	149	34	32	0
Nighttime (4:25p-1:00a)	1,432	39% (n=555)	27%	43%	24%	5%	0%	0%
			151	240	134	30	0	0



Multiple High Risk Behaviors—Arlington Elementary

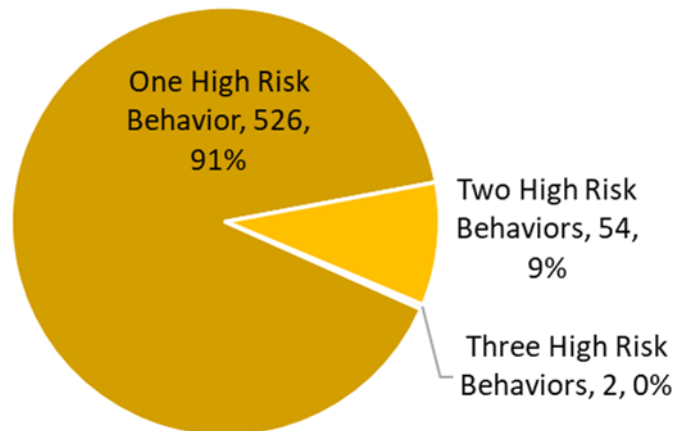
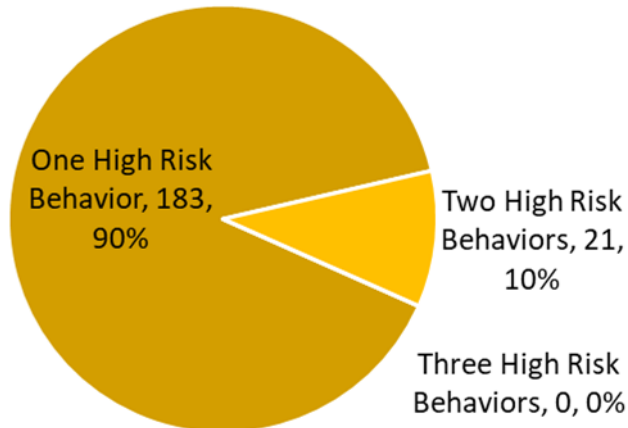
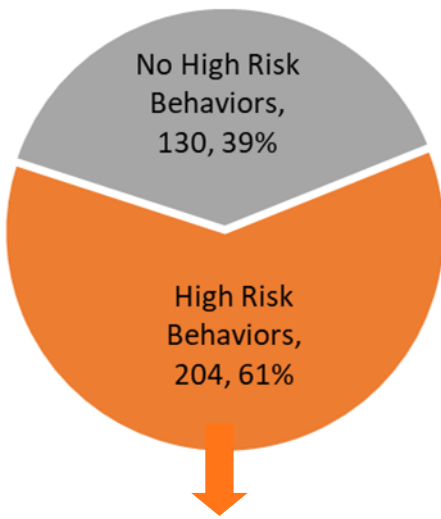
	Active School Zone	Non-School Zone
No High Risk Behavior	130 (39%)	1,610 (73%)
Speeding Only	152 (46%)	228 (10%)
Distraction Only	17 (5%)	148 (7%)
Unbelted Passengers Only	14 (4%)	150 (7%)
Speeding + Distraction	11 (3%)	21 (1%)
Speeding + Unbelted	9 (3%)	15 (1%)
Unbelted + Distracted	1 (< 1%)	18 (1%)
Speeding + Distracted + Unbelted	0 (0%)	2 (< 1%)

THE FATAL FOUR

1. Inappropriate speed
2. Driver distractions
3. Lack of seat belt
4. Alcohol impairment

Active School Zone

Non-School Zone



More than half of drivers (61%) engaged in at least one high risk driver behavior (speeding, distracted, unbelted) in the active school zone compared to one in four drivers during non-school zone hours.

Speeding (>5mph over) was the most common single high risk driver behavior. Speeding and being unbelted was the most common two-high-risk-factors combination.

Two drivers were recorded as speeding, distracted, and unbelted all at once.