



High Risk Driver Behavior—Sacajawea Middle School

Driver Behavior

During Active School Zone Times (404 Drivers)

- ⇒ Median speed = 25 mph
 - *A.M. School Zone = 27 mph
 - *P.M. School Zone = 24 mph
- ⇒ Maximum Speed Recorded = 52 mph
 - *A.M. School Zone = 52 mph
 - *P.M. School Zone = 51 mph
- ⇒ Distracted Drivers = 22 (5%)
- ⇒ Front Seat Passengers Unbelted = 51 (13%)

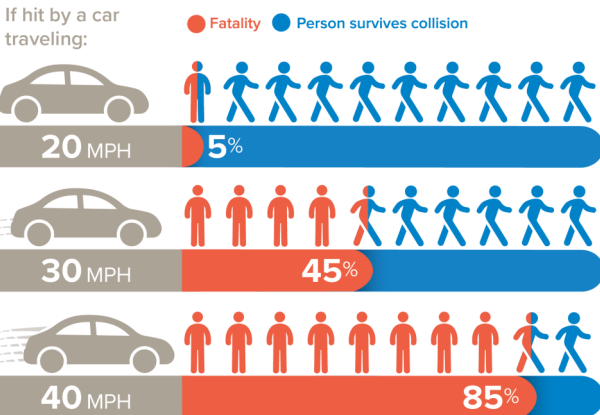
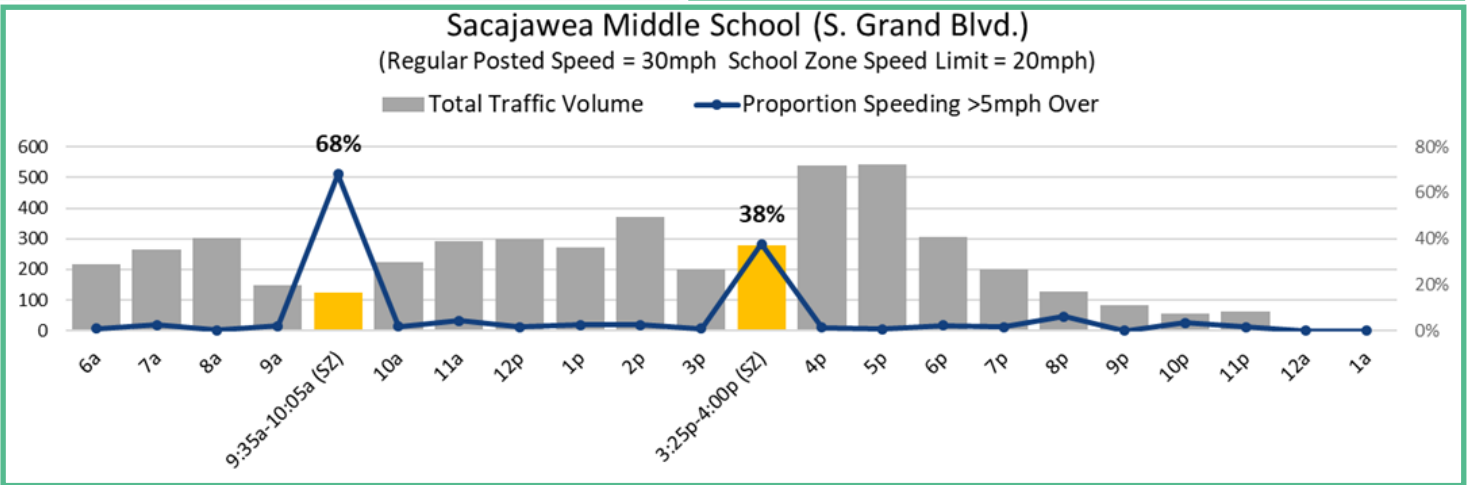
During Regular Posted Speed Times (4,511 Drivers)

- ⇒ Median speed = 28 mph
- ⇒ Maximum Speed Recorded = 52 mph
- ⇒ Distracted Drivers = 201 (7%)
- ⇒ Front Seat Passengers Unbelted = 294 (10%)



Driver behavior data was collected on S. Grand Blvd. within the school zone. This site has flashing beacons indicating the active school zone (20 mph) on Mondays 9:35—10:05 a.m. and 3:25—3:55 p.m. The regular posted speed is 30 mph.

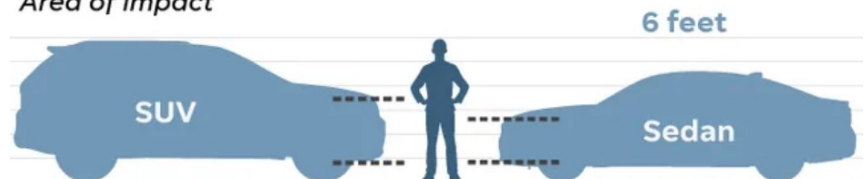
Overall, drivers exceeding the regular 30 mph limit by more than 5 mph is very low; however, drivers are not adjusting travel speeds in response to the flashing beacons. Two-thirds of drivers traveled greater than 25 mph during the morning school zone when traffic was lighter compared to one-third of drivers during the afternoon school zone.



Size does matter

SUV front ends are taller, so they strike pedestrians higher on their bodies. That means they are more likely to kill a pedestrian than a car that would strike a person's leg.

Area of impact



SOURCE Free Press research; USA TODAY



Driver Behavior in School Zones—Sacajawea Middle School

Traffic sensors collected speed data from 6:00 a.m. until 1 a.m. (20 hours). In addition to speed, vehicle type, driver distraction, and front seat occupant seat belt use were collected from 7:00 a.m. until 5:00 p.m. (10 hours).

The majority (85%) of drivers were traveling greater than 20 mph during school zone times, and one in ten speeding drivers traveled greater than 30 mph in the active school zone. Traffic was lighter during the morning school zone, making travel speeds higher (14% of drivers traveled greater than 30 mph compared to 5% in the afternoon).

Driver Speeding Behavior—S. Grand Blvd.			How fast are SPEEDING DRIVERS going?					
Posted Speed/ Vehicle Action	Total Driver Observations (n=)	Speeding Driver	Speeding 1-5 mph over	Speeding 6-10 mph over	Speeding 11-15 mph over	Speeding 15-20 mph over	Speeding 21-25 mph over	Speeding 25+ mph over
Regular Posted Speed Limit = 30 mph	4,511	20% (n=918)	91%	8%	1%	0%	0%	0%
			832	74	8	2	2	0
School Zone Flashing Beacons = 20mph	404	85% (n=344)	45%	47%	7%	< 1%	0%	1%
			154	162	24	1	0	2
School Zone Speeding Behavior								
A.M. School Zone (9:35 a.m.-10:05 a.m.)	125	90% (n=112)	24%	62%	12%	1%	0%	1%
			27	69	13	1	0	1
P.M. School Zone (3:25 p.m.-3:55 p.m.)	279	83% (n=232)	55%	40%	5%	0%	0%	< 1%
			127	93	11	0	0	1
Speeding Behavior by Vehicle Type (Collected 7:00 a.m.—5:00 p.m.)								
Bus	0	0	0%	0%	0%	0%	0%	0%
			0	0	0	0	0	0
Pickup Truck	436	30% (n=130)	74%	22%	5%	0%	0%	0%
			96	28	6	0	0	0
Sedan	1,377	28% (n=386)	76%	20%	3%	< 1%	< 1%	< 1%
			295	77	11	1	1	1
SUV	994	27% (n=268)	66%	28%	4%	1%	0%	< 1%
			178	75	11	2	0	1
Van	505	29% (n=146)	77%	20%	3%	0%	1%	0%
			112	29	4	0	1	0
Speeding Behavior by Light Conditions (All Times)								
Daylight (6:45a-4:24p)	3,071	29% (n=888)	72%	23%	4%	< 1%	< 1%	< 1%
			643	206	32	2	2	2
Nighttime (4:25p-1:00a)	1,844	20% (n=374)	92%	8%	0%	< 1%	0%	0%
			343	30	0	1	0	0



Multiple High Risk Behaviors—Sacajawea Middle School

	Active School Zone	Non-School Zone
No High Risk Behavior	182 (45%)	2,387 (82%)
Speeding Only	155 (38%)	52 (2%)
Distraction Only	8 (2%)	173 (6%)
Unbelted Passengers Only	24 (6%)	263 (9%)
Speeding + Distraction	8 (2%)	2 (< 1%)
Speeding + Unbelted	21 (5%)	5 (< 1%)
Unbelted + Distracted	0 (0%)	26 (1%)
Speeding + Distracted + Unbelted	6 (1%)	0 (0%)

THE FATAL FOUR



1. Inappropriate speed



2. Driver distractions



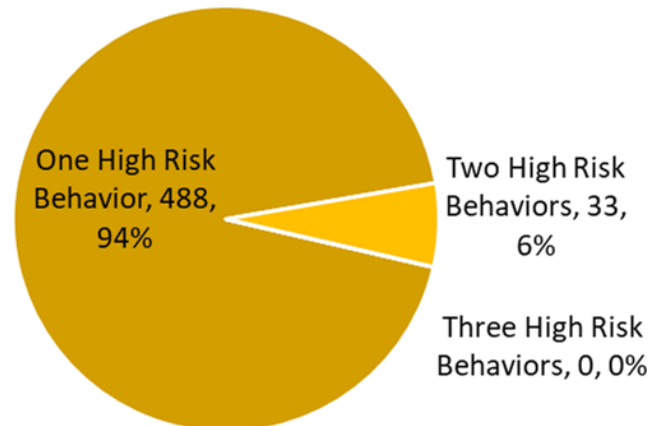
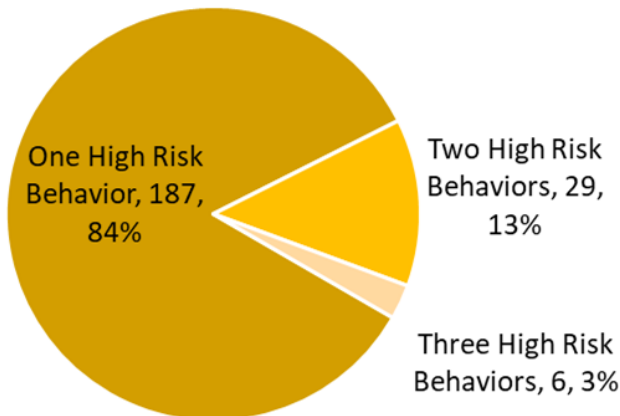
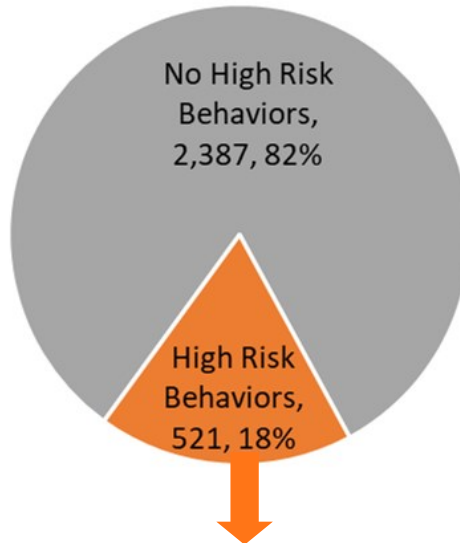
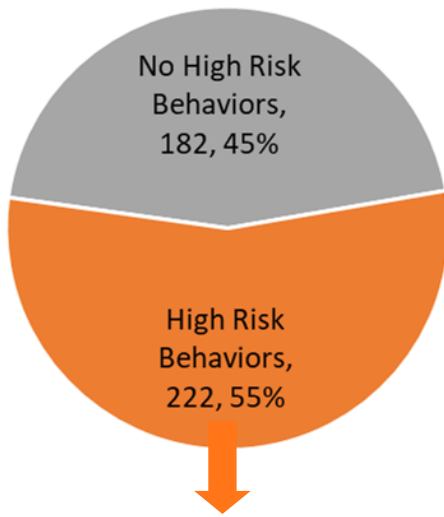
3. Lack of seat belt



4. Alcohol impairment

Active School Zone

Non-School Zone



More than half of drivers (55%) engaged in at least one high risk driver behavior (speeding, distracted, unbelted) in the active school zone compared to less than one in five drivers (18%) during non-school zone hours.

Speeding (>5mph over) was the most common single high risk driver behavior during school zone times. Speeding and being unbelted was the most common two-high-risk-factors combination

Six drivers were recorded as speeding, distracted, and unbelted all at once and during active school zone times.