



# High Risk Driver Behavior—Flett Middle School

## Driver Behavior

### During Active School Zone Times (100 Drivers)

- ⇒ Median speed = 30 mph
  - \*A.M. School Zone = 30 mph
  - \*P.M. School Zone = 30 mph
- ⇒ Maximum Speed Recorded = 43 mph
  - \*A.M. School Zone = 37 mph
  - \*P.M. School Zone = 43 mph
- ⇒ Distracted Drivers = 18 (18%)
- ⇒ Front Seat Passengers Unbelted = 4 (4%)

### During Regular Posted Speed Times (1,006 Drivers)

- ⇒ Median speed = 32 mph
- ⇒ Maximum Speed Recorded = 49 mph
- ⇒ Distracted Drivers = 84 (11%)
- ⇒ Front Seat Passengers Unbelted = 92 (12%)

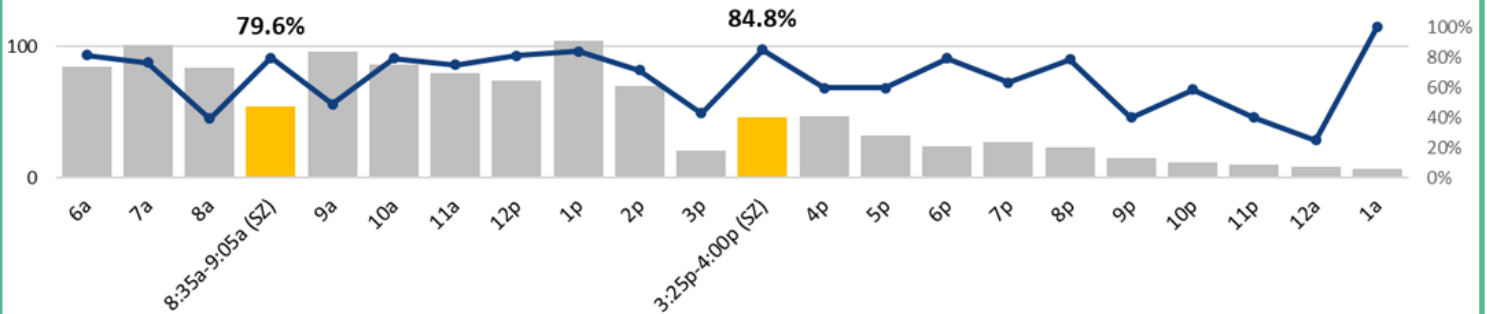


Driver behavior data was collected on W. Wellesley Ave. near the front of the school. This site has “20 mph when children are present” signage indicating the active school zone presumed to be 8:35—9:05 a.m. and 3:25—4:00 p.m. for report purposes. The regular posted speed is 25 mph. Speeding behavior was high at this location with most drivers traveling at least 5 mph over the speed limit at all times including in the active school zone. Nearly one in five drivers were driving distracted in the active school zone which was higher than non-school zone times (one in ten drivers).

## Flett Middle School (W. Wellesley Ave.)

(Regular Posted Speed = 25mph School Zone Speed Limit = 20mph)

■ Total Traffic Volume    ● Proportion Speeding >5mph Over



If hit by a car traveling:

● Fatality ● Person survives collision



20 MPH    5%



30 MPH    45%

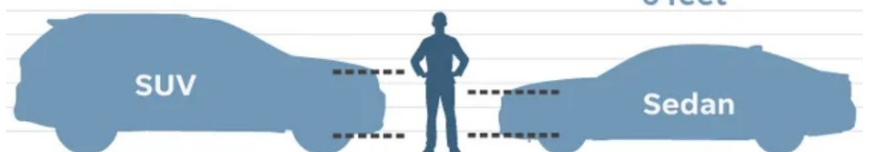


40 MPH    85%

## Size does matter

SUV front ends are taller, so they strike pedestrians higher on their bodies. That means they are more likely to kill a pedestrian than a car that would strike a person’s leg.

### Area of impact



SOURCE Free Press research; USA TODAY



## Driver Behavior in School Zones—Flett Middle School

Traffic sensors collected speed data from 6:00 a.m. until 1 a.m. (20 hours). In addition to speed, vehicle type, driver distraction, and front seat occupant seat belt use were collected from 7:00 a.m. until 5:00 p.m. (10 hours).

Nearly all drivers were exceeding the 25 mph posted speed limit and the 20 mph active school zone limit, with an alarming one-quarter of speeding drivers traveling greater than 35 mph at this location. There was no difference in speeding behavior among drivers of different vehicle types nor between daytime and nighttime hours.

Driver Speeding Behavior—W. Wellesley Ave.			How fast are SPEEDING DRIVERS going?					
Posted Speed/ Vehicle Action	Total Driver Observations (n=)	Speeding Driver	Speeding 1-5 mph over	Speeding 6-10 mph over	Speeding 11-15 mph over	Speeding 15-20 mph over	Speeding 21-25 mph over	Speeding 25+ mph over
Regular Posted Speed Limit = 25 mph	1,006	89% (n=900)	24%	50%	23%	3%	< 1%	0%
			213	453	205	28	1	0
School Zone WCP Signage = 20mph	100	90% (n=90)	9%	46%	36%	9%	1%	0%
			8	41	32	8	1	0
<b>School Zone Speeding Behavior</b>								
A.M. School Zone (8:35 a.m.-9:05 a.m.)	54	91% (n=49)	12%	41%	37%	10%	0%	0%
			6	20	18	5	0	0
P.M. School Zone (3:25 p.m.-4:00 p.m.)	46	89% (n=41)	5%	51%	34%	7%	2%	0%
			2	21	14	3	1	0
<b>Speeding Behavior by Vehicle Type (Collected 7:00 a.m.—5:00 p.m.)</b>								
Bus	10	90% (n=9)	22%	44%	33%	0%	0%	0%
			2	4	3	0	0	0
Pickup Truck	100	89% (n=89)	33%	47%	17%	3%	0%	0%
			29	42	15	3	0	0
Sedan	351	89% (n=313)	26%	51%	20%	3%	0%	0%
			80	161	62	9	1	0
SUV	254	88% (n=223)	28%	49%	21%	2%	0%	0%
			62	110	46	5	0	0
Van	148	86% (n=127)	22%	45%	28%	6%	0%	0%
			28	57	35	7	0	0
<b>Speeding Behavior by Light Conditions (All Times)</b>								
Daylight (6:45a-4:24p)	853	88% (n=754)	26%	49%	21%	3%	0%	0%
			195	371	161	26	1	0
Nighttime (4:25p-1:00a)	253	90% (n=228)	26%	50%	23%	1%	0%	0%
			59	114	52	3	0	0



# Multiple High Risk Behaviors—Flett Middle School

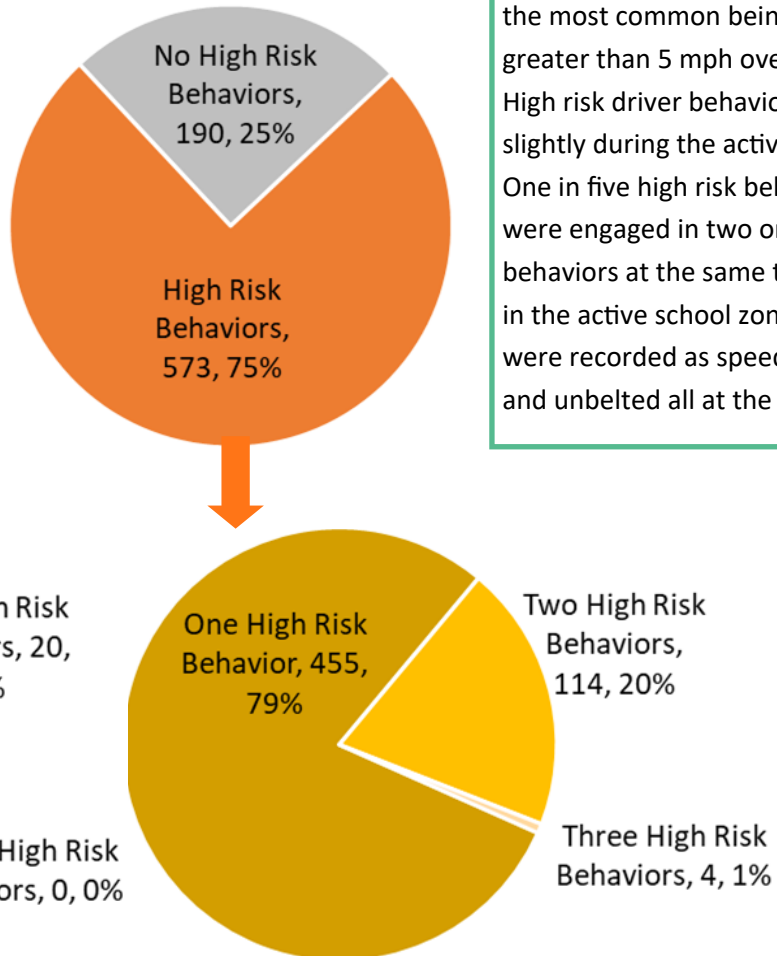
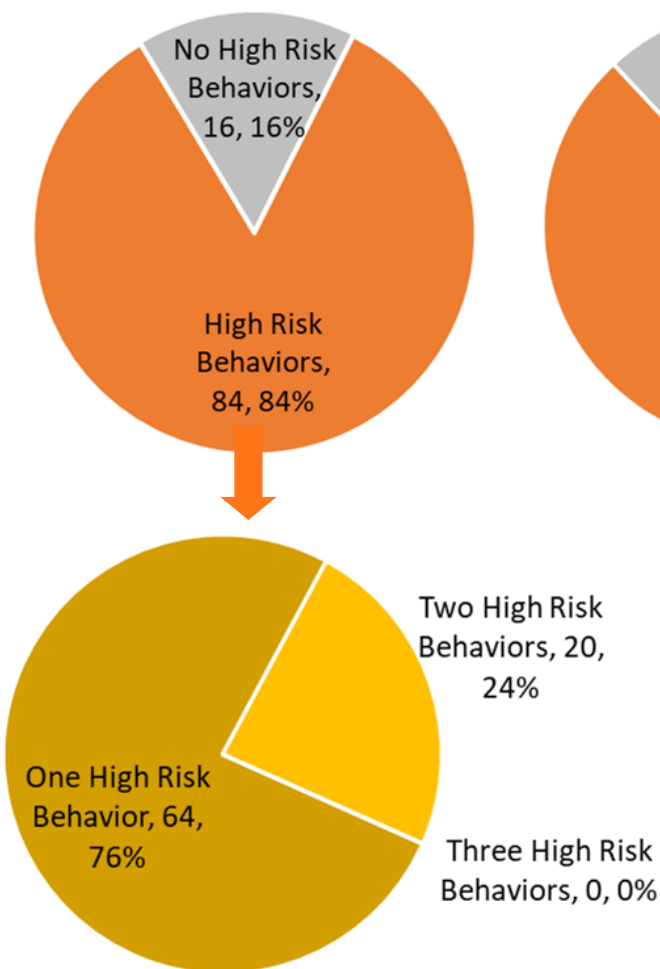
	Active School Zone Times	Non-School Zone Times
No High Risk Behavior	16 (16%)	190 (25%)
Speeding Only	62 (62%)	404 (53%)
Distraction Only	1 (1%)	21 (3%)
Unbelted Passengers Only	1 (1%)	30 (4%)
Speeding + Distraction	17 (17%)	56 (7%)
Speeding + Unbelted	3 (3%)	55 (7%)
Unbelted + Distracted	0 (0%)	3 (1%)
Speeding + Distracted + Unbelted	0 (0%)	4 (1%)

### THE FATAL FOUR

1. Inappropriate speed
2. Driver distractions
3. Lack of seat belt
4. Alcohol impairment

## Active School Zone

## Non-School Zone



Three of every four drivers engaged in at least one high risk driver behavior, the most common being speeding greater than 5 mph over the speed limit. High risk driver behavior increased slightly during the active school zone. One in five high risk behavior drivers were engaged in two or more high risk behaviors at the same time (one in four in the active school zone). Four drivers were recorded as speeding, distracted, and unbelted all at the same time.