



# High Risk Driver Behavior — Peperzak Middle School

## Driver Behavior

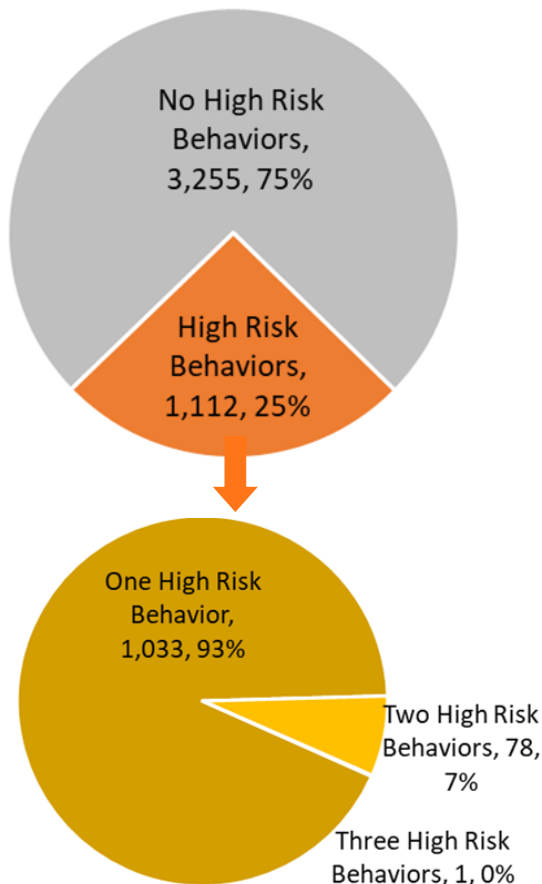
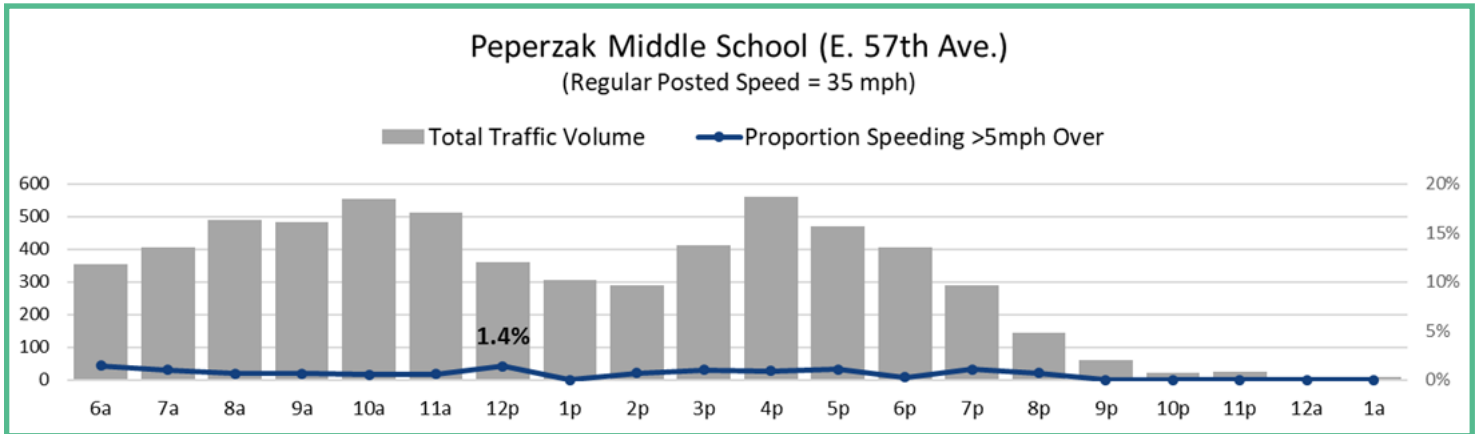
Regular Posted Speed = 35 mph (6,152 Drivers)

- ⇒ Median speed = 32 mph
- ⇒ Maximum Speed Recorded = 49 mph

Drivers 7:00 a.m.—5:00 p.m. (4,367 Drivers)

- ⇒ Distracted Drivers = 663 (15%)
- ⇒ Front Seat Passengers Unbelted = 497 (11%)

Driver behavior data was collected on E. 57th Ave. near S. Lee St. This location is not in a school zone but was identified as an area of concern for children traveling to/from school. The regular posted speed is 35 mph. Thirteen percent of drivers were traveling greater than 35 mph. One of every seven drivers were distracted and one in ten were unbelted. Speeding is low at this location as less than one percent of all drivers were traveling greater than 40 mph. The highest recorded driver speed at this location was 49 mph.



Multiple High Risk Behaviors	Frequency
No High Risk Behavior	3,255 (75%)
Speeding Only	24 (1%)
Distracted Only	586 (13%)
Unbelted Passengers Only	423 (10%)
Speeding + Distracted	5 (< 1%)
Speeding + Unbelted	2 (< 1%)
Unbelted + Distracted	71 (2%)
Speeding + Distracted + Unbelted	1 (< 1%)

One of every four drivers engaged in at least one high risk driver behavior. The most common high risk behavior at this location is distracted driving. Seven percent of high-risk drivers were engaged in two or more high risk behaviors at the same time, the most common being distracted and unbelted. One driver was recorded as speeding, distracted, and unbelted all at the same time.



# Driver Speeding Behavior — Peperzak Middle School

Traffic sensors collected speed data from 6:00 a.m. until 1 a.m. (20 hours). In addition to speed, vehicle type, driver distraction, and front seat occupant seat belt use were collected from 7:00 a.m. until 5:00 p.m. (10 hours).

Most drivers traveled at or below the 35 mph posted speed limit. Six drivers were recorded traveling greater than 45 mph. There was no difference in speeding behavior among drivers of different vehicle types nor between daytime and night time hours although five of the six drivers traveling > 45mph were traveling at night time.

## Driver Speeding Behavior—E. 57th Ave.

## How fast are SPEEDING DRIVERS going?

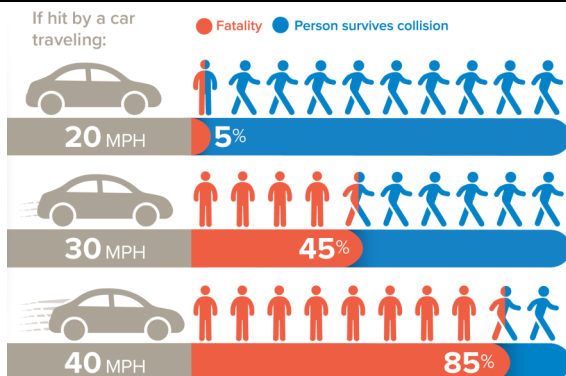
Posted Speed/ Vehicle Action	Total Driver Observations (n=)	Speeding Driver	Speeding 1-5 mph over	Speeding 6-10 mph over	Speeding 11-15 mph over	Speeding 15-20 mph over	Speeding 21-25 mph over	Speeding 25+ mph over
Regular Posted Speed Limit = 35 mph	6,152	13% (n=821)	94%	5%	1%	0%	0%	0%
			774	41	6	0	0	0

### Speeding Behavior by Vehicle Type (Collected 7:00 a.m.—5:00 p.m.)

Bus	0	0	0%	0%	0%	0%	0%	0%
			0	0	0	0	0	0
Pickup Truck	322	15% (n=47)	96%	4%	0%	0%	0%	0%
			45	2	0	0	0	0
Sedan	1,923	15% (n=279)	96%	4%	0%	0%	0%	0%
			267	12	0	0	0	0
SUV	1,300	13% (n=175)	97%	3%	0%	0%	0%	0%
			169	6	0	0	0	0
Van	822	12% (n=101)	88%	11%	1%	0%	0%	0%
			89	11	1	0	0	0

### Speeding Behavior by Light Conditions (All Times)

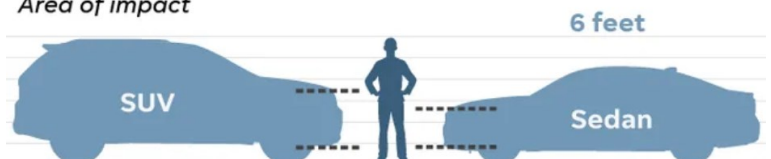
Daylight (6:45a-4:24p)	4,151	14% (n=581)	95%	5%	< 1%	0%	0%	0%
			552	28	1	0	0	0
Nighttime (4:25p-1:00a)	2,001	12% (n=240)	93%	5%	2%	0%	0%	0%
			222	13	5	0	0	0



## Size does matter

SUV front ends are taller, so they strike pedestrians higher on their bodies. That means they are more likely to kill a pedestrian than a car that would strike a person's leg.

### Area of impact



SOURCE Free Press research; USA TODAY