

# A

*Review of  
1990 Traffic  
Collisions in  
Washington*

*May 1991*

Washington Traffic  
Safety Commission

*Sources*

*Collision Data:*

Records Section,  
Washington State Patrol.

*Roadway Data:*

Planning, Research and Public  
Transportation Division,  
Department of Transportation.

*License Data:*

Department of Licensing.

Washington Traffic  
Safety Commission  
1000 South Cherry Street  
MS:PD-11  
Olympia, WA 98504  
(206) 753-6197

# A Review of 1990 Traffic Collisions in Washington

Table of Contents	Page
Recap of Traffic Collisions - Two Year Comparison . . . . .	1
Summary of Motor Vehicle Collisions - By Month - 1990 . . . . .	1
Dripping Driver Collisions - Two-Year Comparison . . . . .	2
Collisions By Type - Two-Year Comparison . . . . .	2
Collisions By Location - Two-Year Comparison . . . . .	3
Collisions By Type of Vehicle - Two-Year Comparison . . . . .	3
Traffic Fatalities - 1990 & Percent Change from 1989 . . . . .	4
Traffic Fatality Percentages by Age and Sex - 1990 . . . . .	4
Comparison of Traffic Deaths By Months - Three-Year Comparison . . . . .	5
Traffic Deaths Per Month - 1990 . . . . .	5
Traffic Injuries By Month - 1990 . . . . .	6
Persons Killed & Injured By Age and by Status - 1990 . . . . .	6
Traffic Safety Statistics 1972 - 1990 . . . . .	7
Comparison of Severity of Injury By Year - 1961-1990 . . . . .	8
<b>10-Year Comparisons:</b>	
Traffic Deaths; Miles Traveled . . . . .	9
Death Rate; Reported Collisions and Injuries . . . . .	10
Multiple Vehicle Collisions; Single Vehicle Collisions . . . . .	11
Vehicle-Pedestrian Collisions; Vehicle-Pedalcyclist Collisions . . . . .	12
Summary of Motor Vehicle Traffic Collisions - 1990 . . . . .	13
Collisions By Hour - 1990 . . . . .	14
Summary of Motor Vehicle Traffic Collisions by Type of Collision - 1990 . . . . .	15
Accumulated Traffic Deaths and Travel - Percent Change 1989 to 1990 by Month . . . . .	15
Contributing Circumstances in Collisions - Top 10 Driver Violations By County - 1990 . . . . .	16
Driver Distribution By Age Group and Sex - 1990 . . . . .	17
Summary of Motor Vehicle Collisions By Age and Violation - 1990 . . . . .	18
Motor Vehicle Traffic Collisions By Investigating Agency - 1990 . . . . .	19
Collision Rates By City Population - 1990 . . . . .	20
Collision Rates By County Population - 1990 . . . . .	21
Traffic Collisions/Collision Rates in Unincorporated Areas by County & Population - 1990 . . . . .	22

**Alcohol Involvement**

Comparison of Alcohol-Related Fatalities to Total Fatalities - Ten-Year Comparison . . . . . 23

Percent of Alcohol-Related Fatalities to Total Fatalities - Ten-Year Comparison . . . . . 23

Persons Killed & Injured in Alcohol-Related Collisions - Two-Year Comparison . . . . . 24

Persons Killed/Injured in Alcohol-Related Collisions - 3-Year Comparison by Month . . . . . 24

Sobriety of Drivers in Fatal Collisions - Comparisons with Previous Years . . . . . 25

Percentage of Drinking Drivers in Fatal Collisions - Ten Year Comparison . . . . . 25

Sobriety of Drivers Involved in Investigated Collisions - Comparisons with Previous Years . . . . . 26

Percentage of Drinking and Drunk Drivers in Total Collisions - Ten-Year Comparison . . . . . 26

Sobriety of Drivers Involved in Injury Collisions - Comparisons with Previous Years . . . . . 27

Drivers Involved In Alcohol-Related Collisions - Age and Miles Traveled - 1990 . . . . . 27

Comparison of Alcohol-Related Collisions by Motor Vehicle Travel by County - 1990 . . . . . 28

Toxicologist Results of Drivers Killed in Fatal Collisions - Five-Year Comparison By Age . . . . . 29

**Teenage Drivers**

Teenage Driver Collisions - Five Year Comparison . . . . . 30

Teenage Driver Collisions - Contributing Circumstances by Age - 1990 . . . . . 30

**Senior Drivers**

Senior Drivers Involved in Collisions - Five-Year Comparison . . . . . 31

Senior Driver Involvement in Investigated Collisions - Contributing Circumstances - 1990 . . . . . 31

**Restraint Use**

Restraint Usage Rate - Five Year Comparison . . . . . 32

Restraint Usage and Injuries Sustained - 1990 . . . . . 32

Types of Restraints Used - By Severity of Injury - 1990 . . . . . 32

Usage Rates by Sex - Five-Year Comparison . . . . . 33

Usage Rates by Age - Five-Year Comparison . . . . . 33

**Motorcycle Collisions**

Motorcycle Collisions Summary - Five-Year Comparison . . . . . 34

Motorcycle Collisions by Location - Two-Year Comparison . . . . . 34

**Pedalcycle Collisions**

Pedalcycle Traffic Collisions - Five-Year Comparison . . . . . 35

Pedalcyclists Killed and Injured by Age - Five-Year Comparison . . . . . 35

**Pedestrian Collisions**

Pedestrians Killed and Injured in Vehicle Collisions - Five-Year Comparison . . . . . 36

Actions of Pedestrians Killed and Injured - Urban and Rural Areas - 1990 . . . . . 36

RECAP OF TRAFFIC COLLISIONS Two-Year Comparison			
Category	1990	1989	% Change From 1989
Persons Killed	825	781	5.6%
Death Rate Per 100 Million Miles	1.83	1.80	1.8%
Fatal Collisions	726	694	4.6%
Persons Injured	76,064	73,993	2.8%
Total Reported Collisions	132,056	128,800	2.5%
Estimated Economic Loss*	\$1,045,000,000	\$922,000,000	13.3%
Miles Traveled (in Millions)**	44,970.0	43,449.3	3.5%
Licensed Drivers	3,366,146	3,350,324	0.5%
Registered Vehicles	4,233,853	4,084,367	3.7%
Population	4,866,692	4,660,700	4.4%

Source: WSP, DOL, WSDOT, National Safety Council

\* Loss estimated for 1990 based on National Safety Council 1989 criteria:  
 Death = \$290,000; Incapacitating inj. = \$32,000; Non-Incapacitating inj. = \$8,300  
 Possible inj. = \$2,600; Property damage = \$3,000

\*\*Estimated for 1990

SUMMARY OF MOTOR VEHICLE COLLISIONS By Month - 1990						
Month	Collisions				Persons	
	Total	Fatal	Injury	Property Damage	Number Killed	Number Injured
January	11,382	60	4,199	7,123	63	6,100
February	11,227	48	3,908	7,271	53	5,540
March	9,821	57	3,959	5,805	61	5,822
April	10,111	48	4,101	5,962	55	6,064
May	10,180	68	4,172	5,940	75	6,187
June	10,546	69	4,265	6,212	82	6,356
July	10,314	72	4,365	5,877	85	6,420
August	10,648	78	4,538	6,032	92	6,753
September	9,581	69	4,073	5,439	80	6,125
October	12,377	55	4,838	7,484	62	7,098
November	11,664	51	4,522	7,091	56	6,593
December	14,205	51	4,773	9,381	61	7,006
<b>TOTAL</b>	<b>132,056</b>	<b>726</b>	<b>51,713</b>	<b>79,617</b>	<b>825</b>	<b>76,064</b>

Source: WSP

DRINKING DRIVER COLLISIONS Two-Year Comparison			
Collisions	1990	1989	Change From 1989
DWI Drivers Involved in Total Collisions	9,973	9,901	0.7%
Number DWI per 100 drivers involved	6.4	6.6	-3.1%
DWI Drivers Involved in Fatal Collisions	324	309	4.9%
Number DWI per 100 Drivers Involved	31.6	30.6	3.5%
Had Been Drinking in Total Collisions	16,760	16,756	0.0%
Number HBD per 100 drivers involved	10.8	11.2	-3.8%
Had Been Drinking in Fatal Collisions	388	354	9.6%
Number HBD per 100 drivers involved	37.9	35.0	8.2%

Source: WSP

COLLISIONS BY TYPE Two-Year Comparison			
Type	1990	1989	Change From 1989
Collisions with Other Motor Vehicles - All	99,944	96,559	3.5%
Collisions with Other Motor Vehicles - Fatal	277	288	-3.8%
One Car (Fixed Object-Overtuned, Etc.) - All	27,498	27,674	-0.6%
One Car (Fixed Object-Overtuned, Etc.) - Fatal	349	289	20.8%
Collisions with Pedestrians - All	1,743	1,778	-2.0%
Collisions with Pedestrians - Fatal	79	102	-22.5%
Collisions with Pedalcyclists - All	1,364	1,303	4.7%
Collisions with Pedalcyclists - Fatal	14	8	75.0%
Collisions with RR Train - All	88	98	-10.2%
Collisions with RR Train - Fatal	6	6	0.0%
Collisions with Animal - All	1,419	1,398	1.5%
Collisions with Animal - Fatal	1	1	0.0%

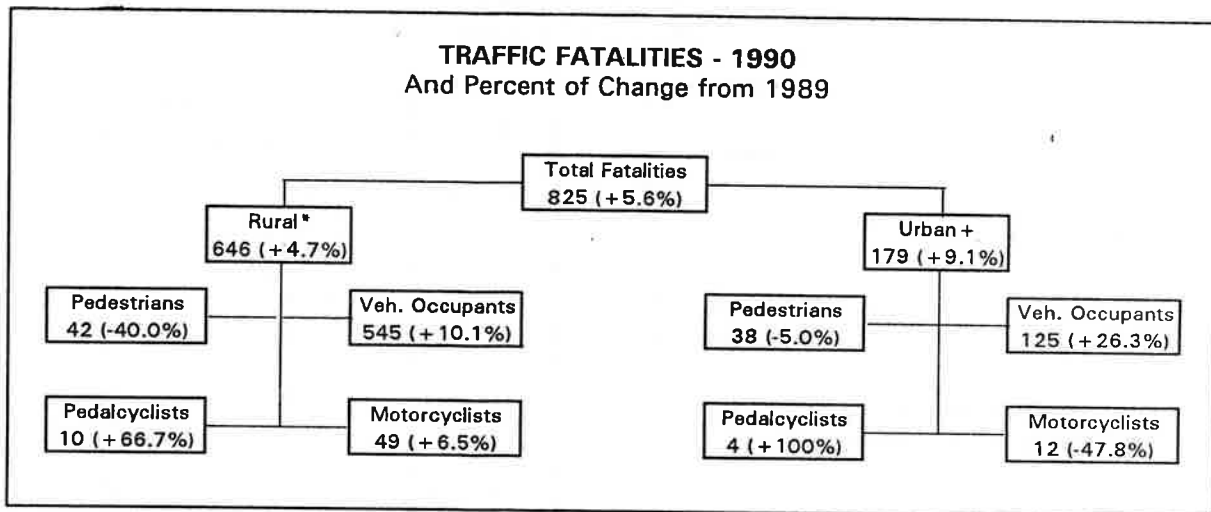
Source: WSP

COLLISIONS BY LOCATION Two-Year Comparison			
Location	1990	1989	Change From 1989
Interstate - All	13,942	13,575	2.7%
Interstate - Fatal	82	74	10.8%
Other State Routes - Rural Areas - All	16,333	16,914	-3.4%
Other State Routes - Rural Areas - Fatal	235	224	4.9%
County Roads - All	27,469	28,505	-3.6%
County Roads - Fatal	255	252	1.2%
City Streets - All	72,364	68,813	5.2%
City Streets - Fatal	141	137	2.9%
Other Traffic Ways - All	948	993	-4.5%
Other Traffic Ways - Fatal	13	7	85.7%

Source: WSP

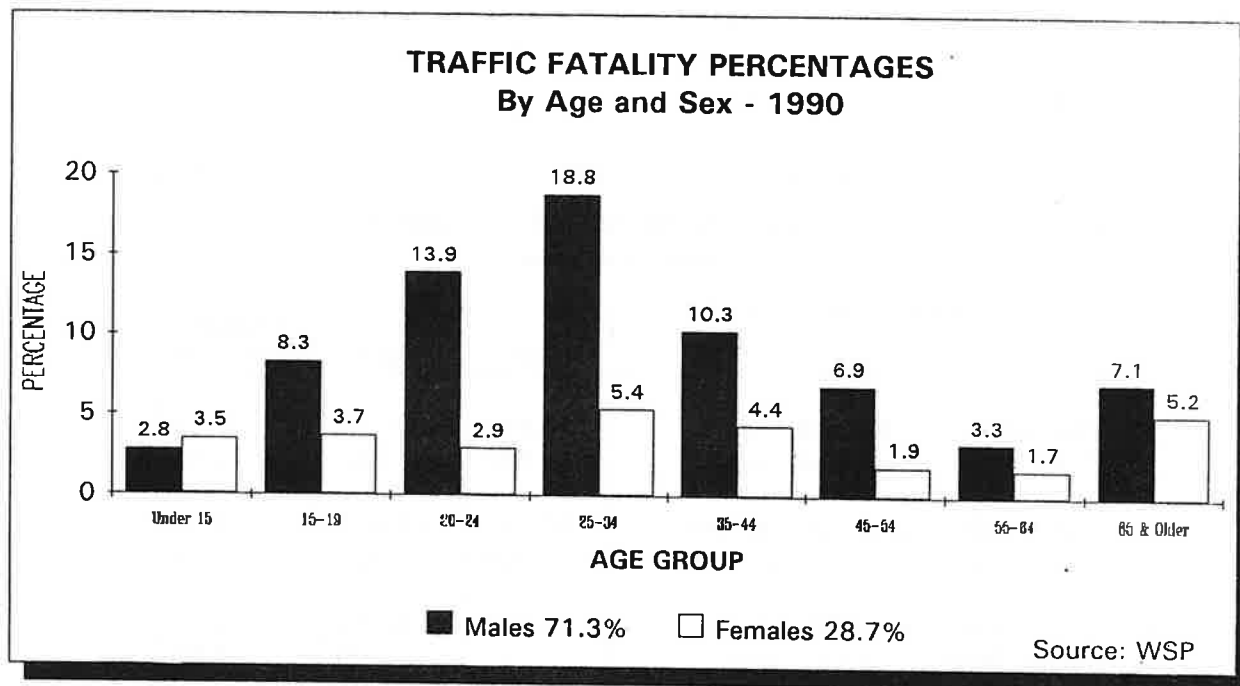
COLLISIONS BY TYPE OF VEHICLE Two-Year Comparison			
Type	1990	1989	Change From 1989
Passenger Cars Involved - All	158,684	156,148	1.6%
Passenger Cars Involved - Fatal	587	583	0.7%
Lightweight Trucks Involved - All	65,713	60,842	8.0%
Lightweight Trucks Involved - Fatal	334	323	3.4%
Heavy Trucks Involved - All	6,725	6,345	6.0%
Heavy Trucks Involved - Fatal	81	79	2.5%
Motorcycles Involved - All	2,198	2,557	-14.0%
Motorcycles Involved - Fatal	61	72	-15.3%

Source: WSP



\* Rural: Unincorporated areas plus incorporated areas with population less than 2,500.  
 + Urban: Cities with population 2,500 and greater.

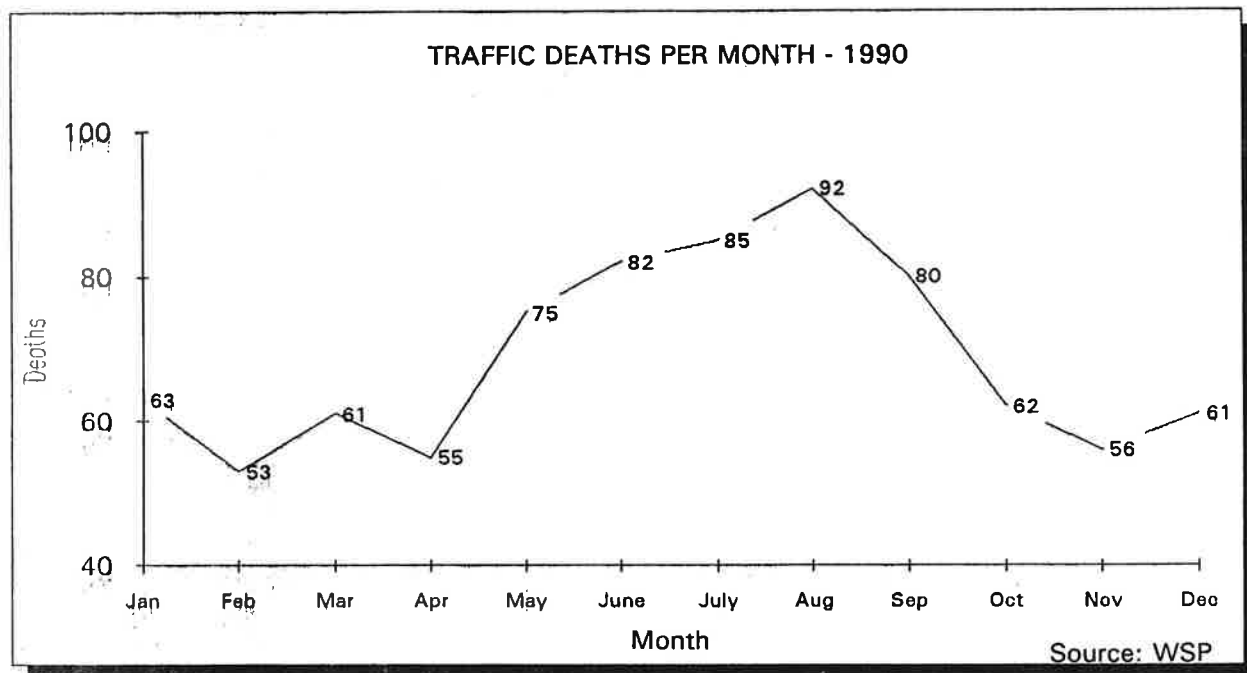
Source: WSP



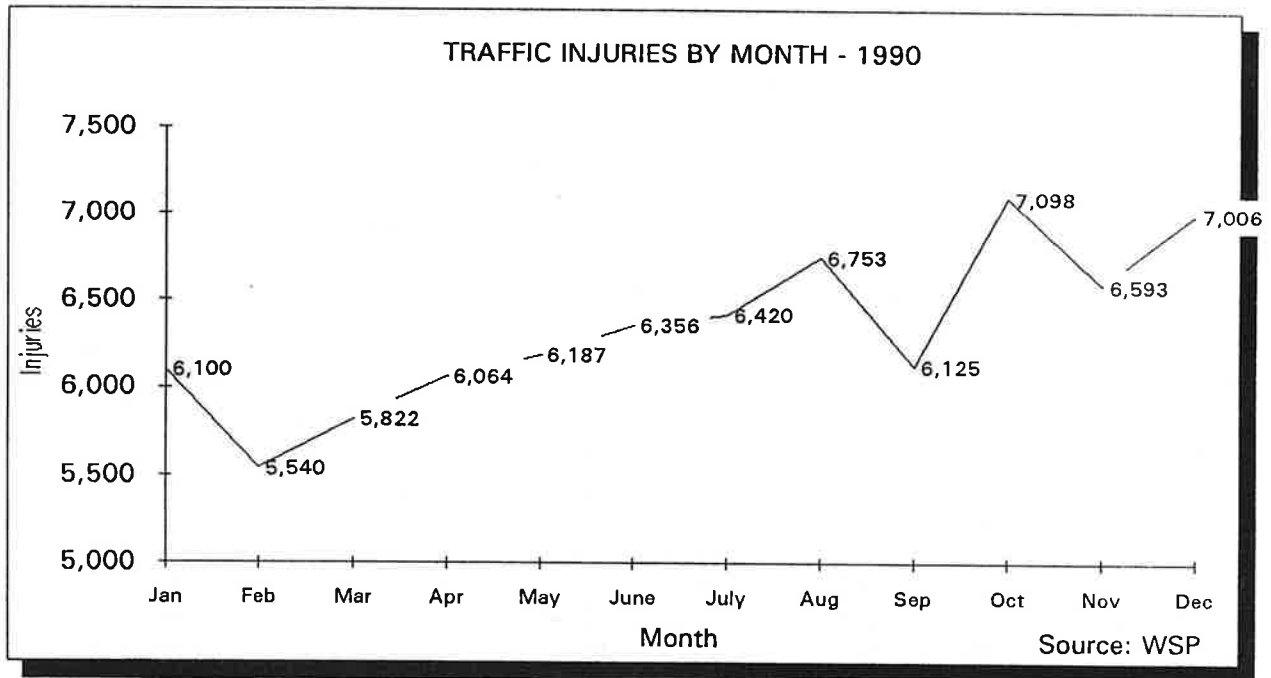
Source: WSP

COMPARISON OF TRAFFIC DEATHS BY MONTH Three-Year Comparison								
Month	1990		1989		1988		1990 Change From 1989	
	Month Total	Year To Date	Month Total	Year To Date	Month Total	Year To Date	Month Total	Year To Date
January	63	63	42	42	40	40	50.0%	50.0%
February	53	116	33	75	42	82	60.6%	54.7%
March	61	177	53	128	70	152	15.1%	38.3%
April	55	232	52	180	55	207	5.8%	28.9%
May	75	307	74	254	69	276	1.4%	20.9%
June	82	389	65	319	82	358	26.2%	21.9%
July	85	474	76	395	86	444	11.8%	20.0%
August	92	566	72	467	79	523	27.8%	21.2%
September	80	646	85	552	70	593	-5.9%	17.0%
October	62	708	81	633	66	659	-23.5%	11.8%
November	56	764	71	704	66	725	-21.1%	8.5%
December	61	825	77	781	60	785	-20.8%	5.6%

Source: WSP







### PERSONS KILLED AND INJURED - 1990 By Age and By Status

Age	Total		Occupants		Pedestrians		Pedalcyclists	
	Killed	Injured*	Killed	Injured	Killed	Injured	Killed	Injured
0 - 4	20	1,537	16	1,447	3	75	1	15
5 - 9	17	2,158	8	1,743	7	225	2	189
10 - 14	15	2,461	11	1,857	0	226	4	377
15 - 19	98	11,359	90	10,963	5	203	3	191
20 - 24	138	11,438	133	11,100	5	170	0	163
25 - 34	199	18,155	190	17,622	9	312	0	213
35 - 44	121	12,360	113	12,049	7	205	1	95
45 - 54	73	6,444	62	6,290	11	117	0	35
55 - 64	41	3,727	33	3,627	6	82	2	16
65 - 74	35	2,648	23	2,560	11	80	1	8
75/Older	66	1,499	49	1,404	17	90	0	5
Not Stated	2	2,278	2	2,157	0	76	0	42
<b>Total</b>	<b>825</b>	<b>76,064</b>	<b>730</b>	<b>72,819</b>	<b>81</b>	<b>1,861</b>	<b>14</b>	<b>1,349</b>

Source: WSP

\* Total injured includes 35 where the status of the injured was unknown.

TRAFFIC SAFETY STATISTICS 1972-1990								
Year	Licensed Drivers	Population	Vehicle		Traffic			Fatality Rate + +
			Registration	Millions of Miles*	Collisions* *	Injuries	Deaths+	
1972	2,011,893	3,418,800	2,315,310	22,363.0	101,002	55,454	855	3.82
1973	2,113,460	3,424,300	2,453,880	23,457.0	105,515	58,039	776	3.31
1974	2,122,131	3,448,100	2,545,975	22,585.0	106,242	57,716	761	3.37
1975	2,176,505	3,493,990	2,640,944	24,023.0	120,635	64,145	771	3.21
1976	2,324,697	3,571,591	2,785,500	25,932.0	120,864	66,309	825	3.18
1977	2,339,215	3,661,975	2,952,383	27,449.0	119,058	71,356	927	3.38
1978	2,485,248	3,774,300	3,042,265	29,378.0	116,923	64,669	1,006	3.42
1979	2,579,368	3,911,200	3,186,898	29,122.0	118,686	65,399	1,034	3.55
1980	2,662,659	4,109,853	3,293,065	28,696.0	113,751	61,532	985	3.43
1981	2,732,722	4,248,100	3,408,871	30,346.0	111,993	61,083	872	2.87
1982	2,774,212	4,264,000	3,313,348	30,353.0	100,644	54,789	757	2.49
1983	2,867,032	4,285,100	3,372,966	32,275.0	106,597	58,317	705	2.18
1984	2,973,468	4,328,100	3,459,772	33,344.0	111,655	61,366	761	2.28
1985	2,980,717	4,384,100	3,546,152	33,978.0	120,056	63,806	756	2.22
1986	3,029,375	4,419,700	3,651,102	36,416.0	122,918	66,707	714	1.96
1987	3,156,600	4,481,100	3,833,058	38,520.0	126,807	67,665	790	2.05
1988	3,264,065	4,565,000	3,896,828	41,698.0	125,920	72,449	785	1.88
1989	3,350,324	4,660,700	4,084,367	43,449.3	128,800	73,993	781	1.80
1990	3,366,146	4,866,692	4,233,853	44,970.0	132,056	76,064	825	1.83

Source: WSP, OFM, DOL, WSDOT

\* Estimated for 1990

\* \* Minimum damage for a reportable collision was increased from \$100 to \$300 to the property of one person on 7-1-77 and to \$500 on 10/1/87.

+ Traffic deaths per 100 million vehicle miles of travel.

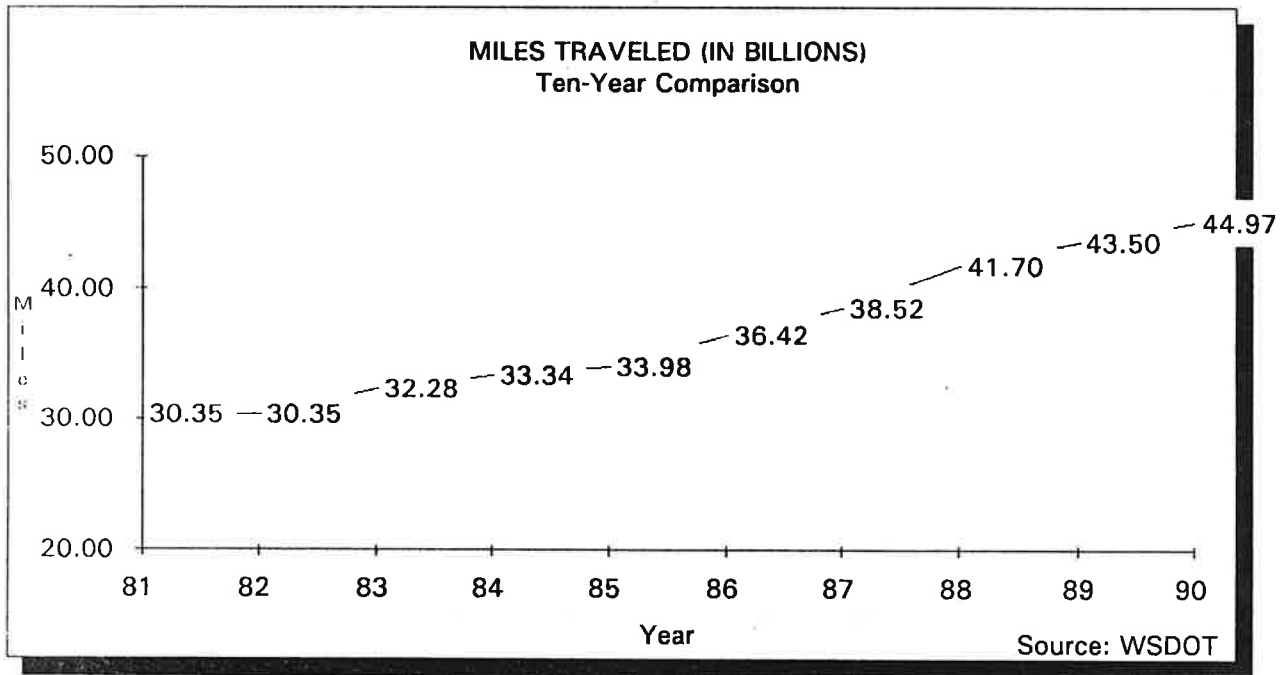
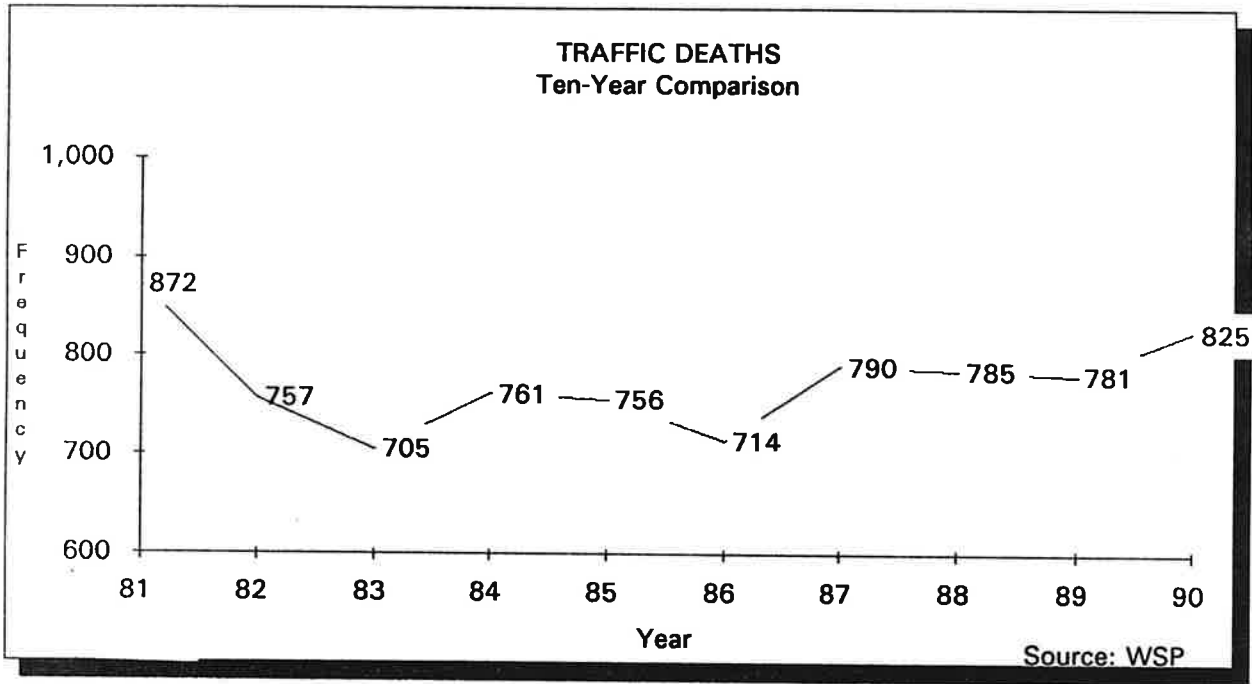
+ + State adopted a 90-day fatal-reporting policy in 1980 and a 30-day fatal-reporting policy in 1989.

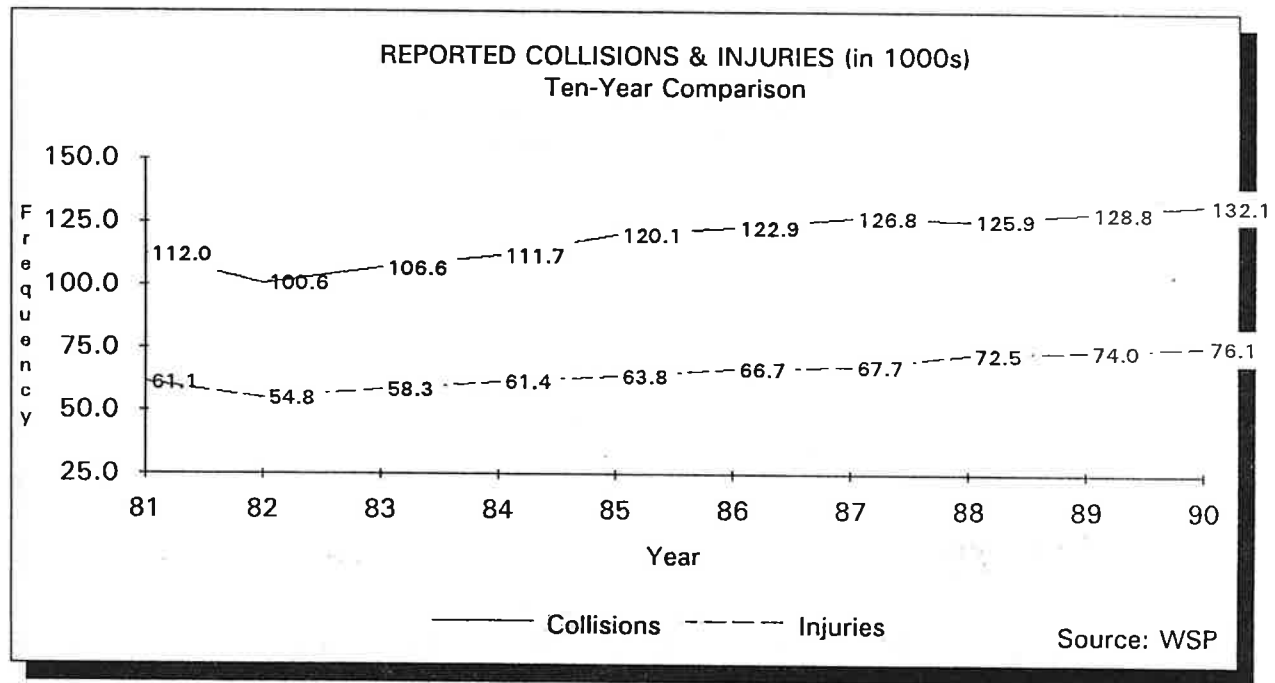
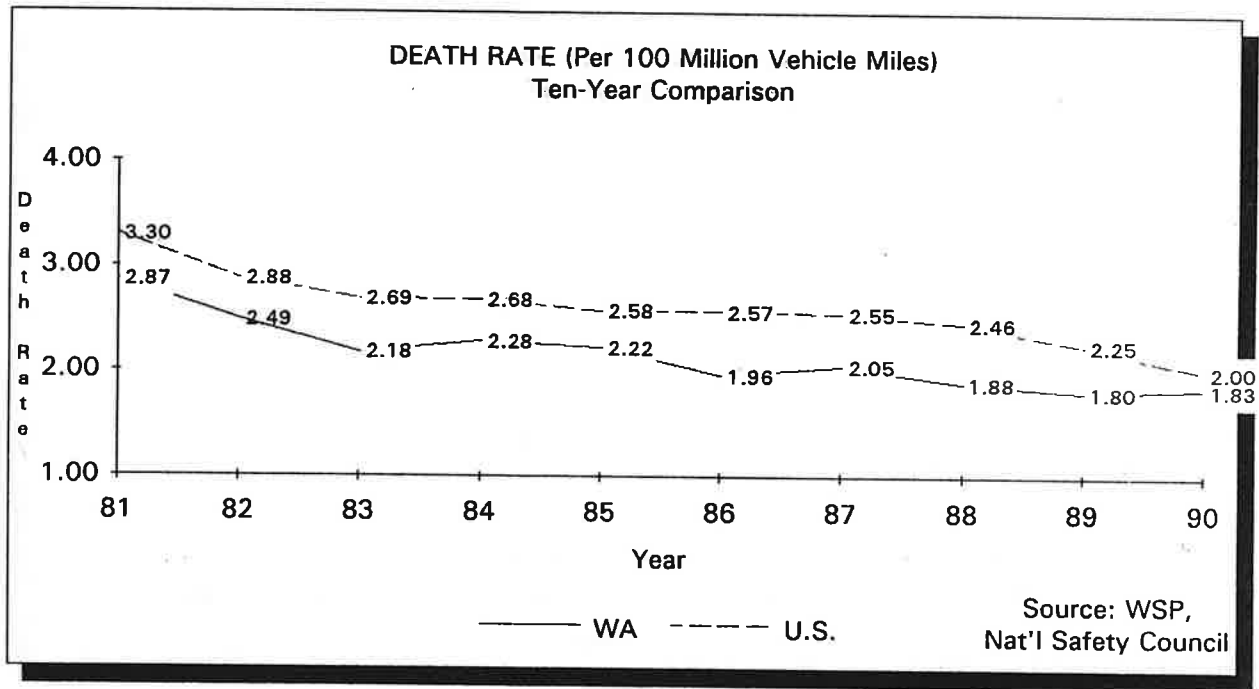
COMPARISON OF SEVERITY OF INJURY BY YEAR 1961-1990					
Year	Traffic Deaths	Injuries			Total Injuries
		A Disabling Injury	B Non-Disabling Injury	C Possible Injury	
1961	580	9,566	10,568	12,772	32,906
1962	611	10,810	10,669	13,090	34,569
1963	633	10,700	11,149	13,090	34,939
1964	731	11,801	11,971	14,026	37,798
1965	729	11,207	12,417	13,279	36,903
1966	828	10,114	16,521	14,692	41,327
1967	876	10,405	18,826	16,490	45,721
1968	931	10,639	20,157	18,650	49,446
1969	834	10,406	18,855	18,093	47,354
1970*	875	7,075	24,241	22,149	53,465
1971	876	7,294	23,462	24,343	55,099
1972	855	6,937	23,459	25,058	55,454
1973	776	7,650	23,907	26,482	58,039
1974	761	7,668	23,503	26,545	57,716
1975	771	8,136	26,083	29,926	64,145
1976	825	8,991	27,186	30,132	66,309
1977	927	9,634	28,308	33,414	71,356
1978**	1,006	10,309	26,618	27,742	64,669
1979	1,034	10,579	27,298	27,522	65,399
1980	985	9,945	25,898	25,689	61,532
1981	872	9,177	25,732	26,174	61,083
1982	757	8,276	22,340	24,173	54,789
1983	705	8,400	23,938	25,979	58,317
1984	761	8,254	24,833	28,279	61,366
1985	756	8,212	25,566	30,028	63,806
1986	714	8,348	26,403	31,956	66,707
1987	790	8,506	26,328	32,831	67,665
1988	785	8,318	26,496	37,635	72,449
1989+	781	8,044	26,974	38,975	73,993
1990	825	7,653	25,722	42,689	76,064

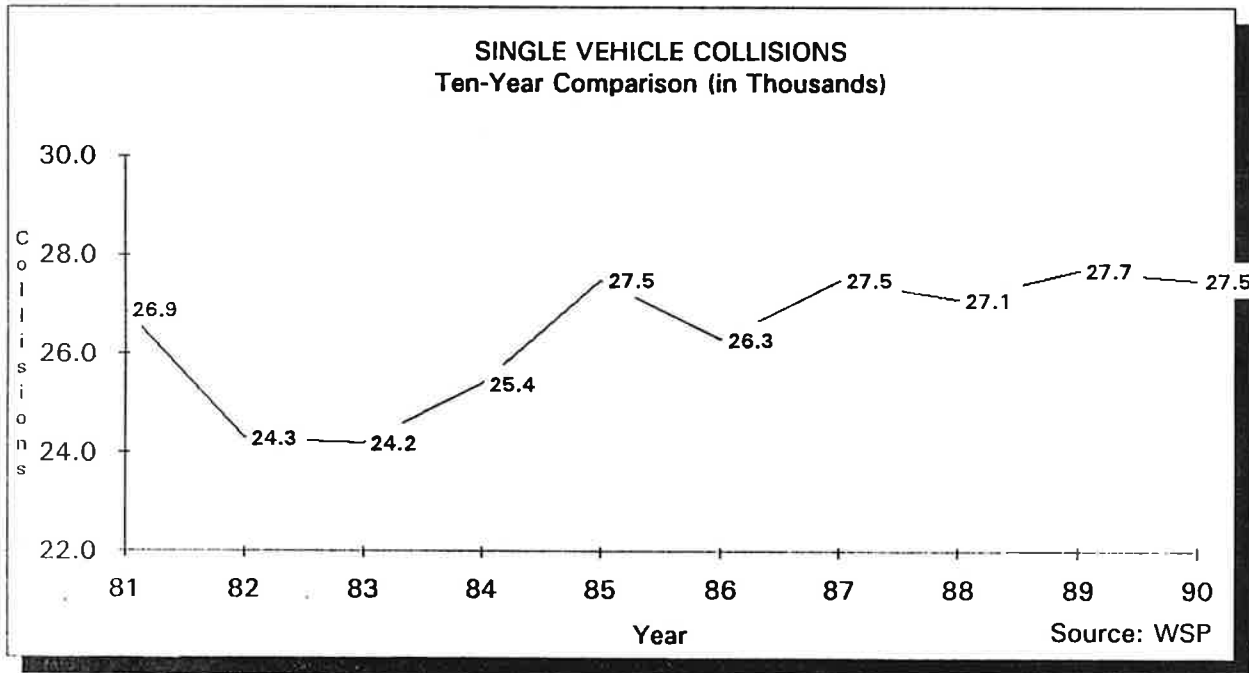
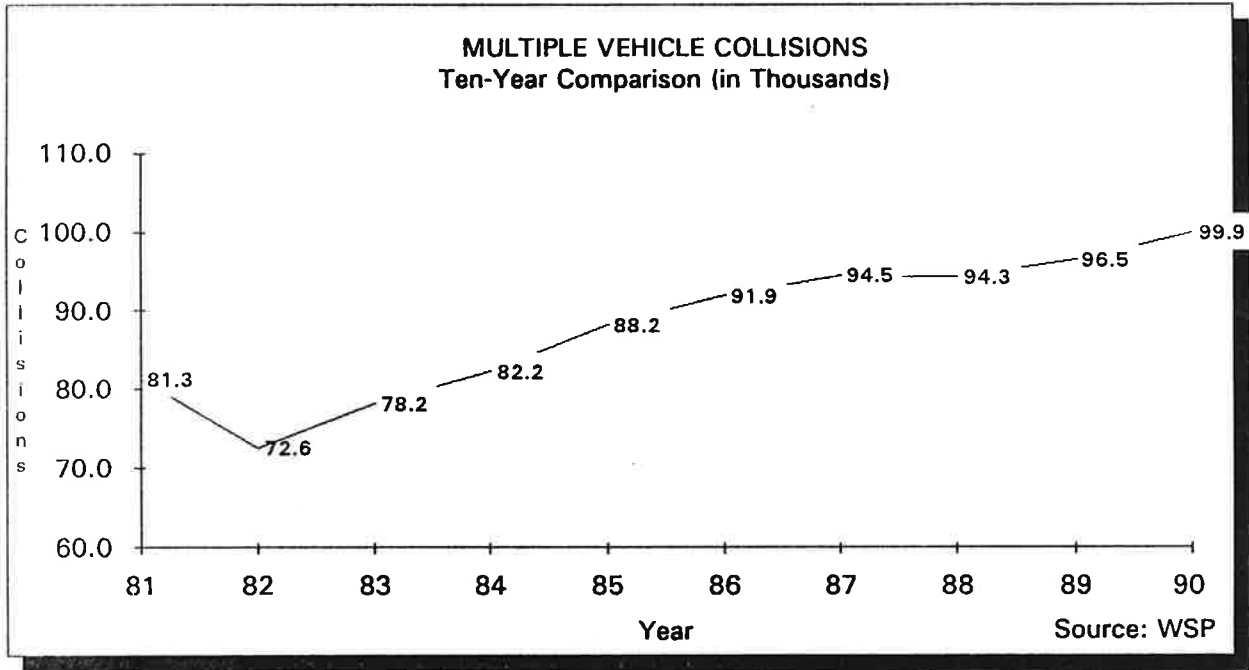
\* 1970 - New statewide investigator's report adopted with all police agencies reporting.

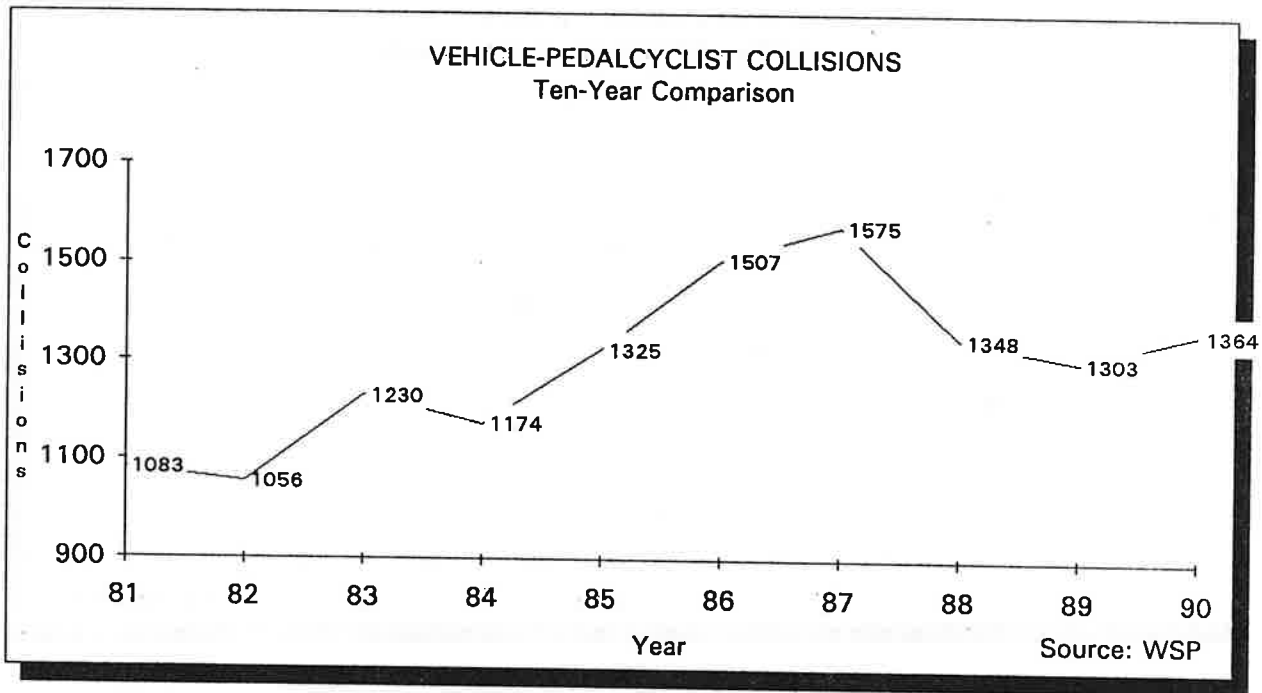
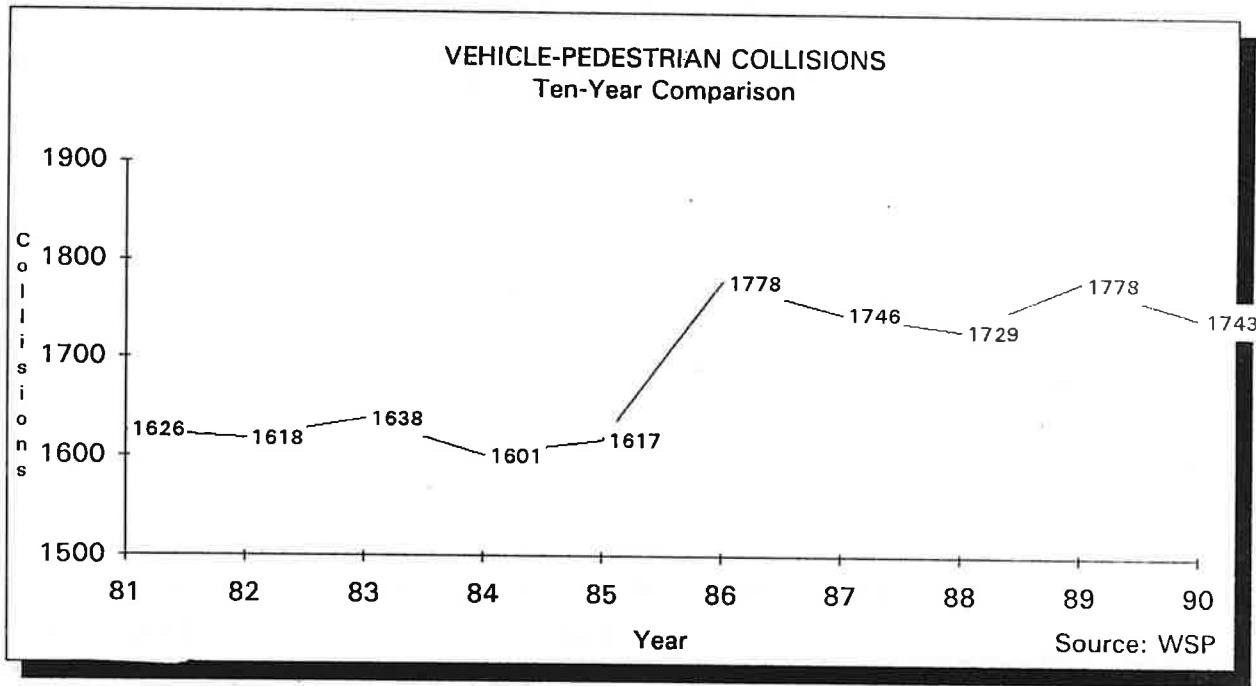
\*\* 1978 - WSP policy change using only the investigator's report for severity of injury--drivers' reports not used in investigated collisions.

+ 1989 - State adopted 30-day fatal reporting policy (had been 90 days from date of crash).









**SUMMARY OF MOTOR VEHICLE TRAFFIC COLLISIONS**  
Year: 1990

Description	Incorporated Areas *	Other Areas **	Statewide Totals
Total Number of Collisions	81,072	50,984	132,056
Total Number of Drivers	151,403	82,812	234,215
Total Number of Vehicles	160,533	85,046	245,579
Number of Fatal Collisions	166	560	726
Number of Injury Collisions	30,002	21,711	51,713
Number of Property Damage Collisions	50,904	28,713	79,617
Number of Persons Killed	179	646	825
Number of Disabling Injury	3,492	4,161	7,653
Number of Non-disabling Injury	12,645	13,077	25,722
Number of Possible Injury	26,752	15,937	42,689
Total Number of Persons Injured	42,889	33,175	76,064
Number of Collisions Investigated by W.S.P.	8,734	29,001	37,735
Number of Collisions Investigated by Other Law Enforcement	51,854	12,753	64,607
Total Number of Investigated Collisions	60,588	41,754	102,342
Percent of Collisions Investigated	74.7%	81.9%	77.5%
Total Number of Drivers in Investigated Collisions	111,079	65,860	176,939
Total Number of Vehicles in Investigated Collisions	118,899	67,673	186,572
Number of Arrests in Investigated Collisions	39,992	26,605	66,597

\* 2,500 population & over

\*\* Under 2,500 population & unincorporated areas

Source: WSP



**COLLISIONS BY HOUR - 1990.**

Hour	Collisions			Monday - Thursday			Friday - Sunday		
	Total	Injury	Fatal	Total	Injury	Fatal	Total	Injury	Fatal
Midnight	3,403	1,341	39	1,267	493	16	2,136	848	23
1:00 a.m.	2,995	1,255	45	1,012	419	19	1,983	836	26
2:00 a.m.	2,871	1,213	37	951	408	13	1,920	805	24
3:00 a.m.	1,504	618	14	526	191	3	978	427	11
4:00 a.m.	1,060	435	17	400	161	6	660	274	11
5:00 a.m.	1,532	575	20	850	303	8	682	272	12
6:00 a.m.	3,048	1,165	12	2,116	808	9	932	357	3
7:00 a.m.	5,466	2,118	20	3,969	1,565	12	1,497	553	8
8:00 a.m.	4,833	1,752	16	3,364	1,238	8	1,469	514	8
9:00 a.m.	4,194	1,504	13	2,562	933	7	1,632	571	6
10:00 a.m.	5,230	1,896	14	3,072	1,080	8	2,158	816	6
11:00 a.m.	6,499	2,387	13	3,776	1,348	9	2,723	1,041	4
Noon	7,774	2,907	20	4,347	1,604	9	3,427	1,303	11
1:00 p.m.	8,136	3,073	25	4,399	1,634	12	3,737	1,439	13
2:00 p.m.	9,243	3,619	40	5,326	2,080	23	3,917	1,539	17
3:00 p.m.	10,535	4,144	45	6,398	2,493	26	4,137	1,651	19
4:00 p.m.	11,096	4,517	41	6,744	2,706	23	4,352	1,811	18
5:00 p.m.	11,351	4,659	53	7,078	2,963	27	4,273	1,696	26
6:00 p.m.	7,800	3,248	41	4,394	1,831	19	3,406	1,417	22
7:00 p.m.	5,794	2,319	41	3,061	1,183	24	2,733	1,136	17
8:00 p.m.	4,625	1,847	35	2,490	994	19	2,135	853	16
9:00 p.m.	4,730	1,881	36	2,453	976	16	2,277	905	20
10:00 p.m.	4,307	1,690	44	2,090	817	23	2,217	873	21
11:00 p.m.	4,030	1,550	45	1,735	680	16	2,295	870	29
<b>TOTAL</b>	<b>132,056</b>	<b>51,713</b>	<b>726</b>	<b>74,380</b>	<b>28,906</b>	<b>355</b>	<b>57,676</b>	<b>22,807</b>	<b>371</b>

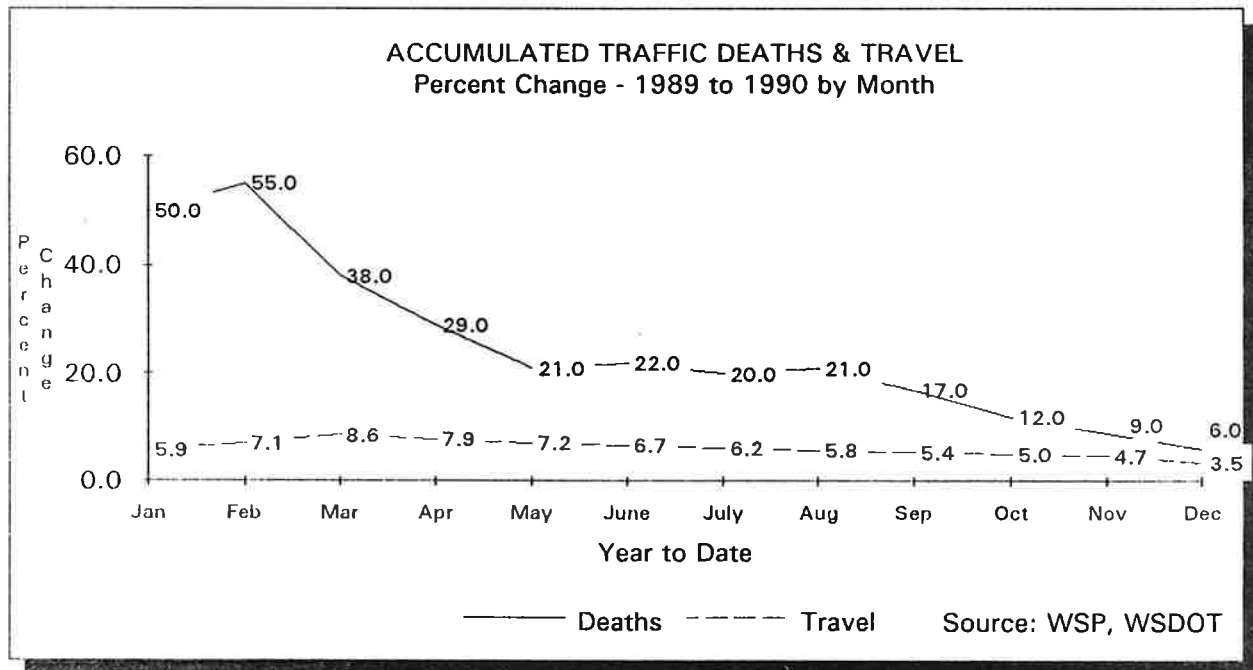
Source: WSP

SUMMARY OF MOTOR VEHICLE TRAFFIC COLLISIONS By Type of Collision - 1990									
Type of Accident	Number of Collisions				Number of Persons				
	Total	Fatal	Non-Fatal	Property Damage	Total Killed	Total Injured	A.	B.	C.
Overturning	5,701	104	3,016	2,581	110	4214	691	2,280	1,243
Other Non-collision	529	8	201	320	8	235	51	110	74
Pedestrian	1,743	79	1,663	1	80	1,783	489	798	496
Motor Vehicle Transport	90,825	259	35,567	54,999	308	55,197	4,177	14,955	36,065
Motor Vehicle On Other Roadway	53	7	26	20	8	69	15	32	22
Parked Motor Vehicle	9,066	11	1,138	7,917	15	1,450	164	711	575
Railway Train	88	6	32	50	6	39	10	8	21
Pedalcyclist	1,364	14	1,326	24	14	1,362	224	821	317
Animal	1,419	1	195	1,223	1	244	31	123	90
Fixed Object	20,942	236	8,462	12,244	274	11,361	1,789	5,834	3,738
Other Object	326	1	87	238	1	110	12	50	48
<b>TOTAL</b>	<b>132,056</b>	<b>726</b>	<b>51,713</b>	<b>79,617</b>	<b>825</b>	<b>76,064</b>	<b>7,653</b>	<b>25,722</b>	<b>42,689</b>

Source: WSP

NOTE: The three categories of injuries follow the manual on classification of motor vehicle collisions (1970 edition).

- A. Disabling injury, an injury other than fatal that prevents the injured person from continuing normal activities.
- B. Non-disabling injury, an injury other than incapacitating that is evident to anyone viewing the injured party.
- C. Possible injury, an injury that is reported or claimed but is not an incapacitating or evident injury.



To illustrate: the figures above the month of April show that traffic deaths for the first four months of 1990 were up 29.0% from the same period in 1989, and that travel for 1990 through April was up 7.9% from 1989.

**CONTRIBUTING CIRCUMSTANCES IN COLLISIONS\***  
**Top Ten Driver Violations by County - 1990**

County	FTY ROW**	Speed Condition	Inatten- tion	Follow Too Close	DWI	Disgrd Sign/Sig.	Ovr Legal Speed	Improper Turn	Defective Equipmt	Over Center	Total Top Ten	All Others
Adams	57	69	76	21	29	14	17	10	22	9	293	59
Asotin	54	22	30	19	23	20	11	5	8	1	184	22
Benton	546	282	231	261	177	167	90	75	53	30	1,829	138
Chelan	253	245	188	143	111	88	59	40	48	41	1,127	110
Clallam	249	205	119	113	100	46	56	38	47	39	926	106
Clark	1,046	730	574	394	418	379	177	124	145	87	3,842	245
Columbia	10	30	20	2	10	2	3	2	7	5	79	12
Cowlitz	375	424	264	126	177	186	94	48	107	44	1,694	121
Douglas	82	66	75	43	42	19	24	13	13	13	364	43
Ferry	3	70	15	3	26	2	8	0	11	9	127	11
Franklin	170	131	90	73	97	61	45	32	30	19	699	57
Garfield	2	18	2	1	4	4	1	2	4	0	34	4
Grant	194	143	177	68	118	55	54	38	43	20	847	120
Grays Harbor	300	391	228	128	189	117	88	75	56	33	1,516	106
Island	187	238	110	67	84	33	51	21	22	26	791	67
Jefferson	65	150	50	24	65	13	38	16	26	15	421	47
King	10,084	6,922	9,983	4,985	2,640	2,799	1,310	1,433	929	809	40,156	2,518
Kitsap	757	1,163	427	381	495	257	276	99	125	120	3,855	297
Kittitas	94	348	186	38	84	27	36	19	50	9	832	106
Klickitat	22	91	53	15	38	4	7	7	20	25	237	45
Lewis	238	451	265	93	149	91	49	40	57	35	1,376	153
Lincoln	11	43	26	5	17	3	7	3	10	2	115	28
Mason	109	327	89	62	141	27	47	11	38	33	813	73
Okanogan	69	176	89	24	91	22	35	11	25	24	517	62
Pacific	54	106	37	11	58	14	23	8	11	14	311	39
Pend Orielle	12	61	24	1	26	3	5	1	14	6	133	19
Pierce	3,195	2,997	1,483	1,604	1,375	1,163	532	387	361	301	12,736	855
San Juan	14	25	33	1	27	1	11	2	7	5	114	9
Skagit	432	463	283	212	233	108	67	52	91	52	1,850	185
Skamania	10	50	32	7	38	3	14	2	6	13	156	26
Snohomish	2,388	2,582	1,089	1,474	1,147	674	397	355	265	257	10,106	729
Spokane	1,828	1,133	745	727	640	807	288	312	146	133	6,480	308
Stevens	58	191	74	25	59	10	14	4	15	29	435	38
Thurston	818	1,033	419	351	316	244	188	136	159	79	3,505	284
Wahkiakum	4	23	9	1	7	0	2	0	3	4	46	2
Walla Walla	204	134	147	48	90	101	40	33	32	13	797	81
Whatcom	616	629	557	180	318	242	114	108	94	69	2,764	272
Whitman	116	178	151	33	33	31	23	26	18	21	591	86
Yakima	961	456	668	294	515	323	174	129	129	93	3,520	354
Statewide Total	25,687	22,796	19,118	12,058	10,207	8,160	4,475	3,717	3,247	2,537	106,218	7,837

Source: WSP

\*Investigated Collisions Only

\*\*Failure to Yield Right of Way

**DRIVER DISTRIBUTION - 1990**  
By Age Group & Sex

Age Group	Involved in Collisions				Total Licensed Drivers		Over/Under Ratio	
	Total		Fatal		Number	%	Total	Fatal
	Number	%	Number	%				
Under 16	644	0.32%	7	0.66%	0	0.00%	****	****
16	4,405	2.16%	18	1.71%	22,205	0.66%	3.28	2.59
17	6,162	3.02%	25	2.37%	39,789	1.18%	2.56	2.01
18	7,266	3.57%	41	3.89%	48,168	1.43%	2.49	2.72
19	7,451	3.66%	26	2.47%	59,215	1.76%	2.08	1.40
20	7,153	3.51%	38	3.61%	59,057	1.75%	2.00	2.06
21	6,650	3.26%	35	3.32%	63,830	1.90%	1.72	1.75
22	6,241	3.06%	45	4.27%	63,798	1.90%	1.62	2.25
23	5,875	2.88%	23	2.18%	65,315	1.94%	1.49	1.13
24	5,698	2.80%	26	2.47%	60,314	1.79%	1.56	1.38
25-29	28,997	14.23%	163	15.48%	376,324	11.18%	1.27	1.38
30-34	26,638	13.07%	135	12.82%	422,477	12.55%	1.04	1.02
35-39	22,556	11.07%	113	10.73%	422,457	12.55%	0.88	0.86
40-44	18,184	8.93%	101	9.59%	385,389	11.45%	0.78	0.84
45-49	12,742	6.25%	60	5.70%	284,642	8.46%	0.74	0.67
50-54	8,977	4.41%	40	3.80%	211,546	6.28%	0.70	0.60
55-59	7,113	3.49%	45	4.27%	177,657	5.28%	0.66	0.81
60-64	6,152	3.02%	24	2.28%	169,059	5.02%	0.60	0.45
65-69	5,387	2.64%	27	2.56%	161,511	4.80%	0.55	0.53
70 & Over	9,451	4.64%	61	5.79%	273,393	8.12%	0.57	0.71
<b>TOTAL*</b>	<b>203,742</b>	<b>100.00%</b>	<b>1,053</b>	<b>100.00%</b>	<b>3,366,146</b>	<b>100.00%</b>		
Male	137,187	62.53%	814	77.01%	1,747,522	51.91%	1.20	1.48
Female	82,200	37.47%	243	22.99%	1,618,624	48.09%	0.78	0.48
<b>TOTAL**</b>	<b>219,387</b>	<b>100.00%</b>	<b>1,057</b>	<b>100.00%</b>	<b>3,366,146</b>	<b>100.00%</b>		

Source: WSP, DOL

\*Total does not include 30,473 drivers in total collisions and 16 drivers in fatal collisions whose age was not stated.

\*\*Total does not include 14,828 drivers in total collisions and 12 drivers in fatal collisions whose sex was not stated.

SUMMARY OF MOTOR VEHICLE COLLISIONS \*  
By Age & Violation - 1990

Driver Age	FTYROW**	Speed Condition	Following Too Close	DWI	Disregard Sign/Sig.	Speed Legal	Defective Equipment	Over Center	Improper Pass	Other Circum.	Total
15 & Under	96	132	32	48	35	52	23	10	6	165	599
16	711	720	298	60	182	211	94	74	64	673	3,087
17	888	956	459	119	241	260	130	96	76	809	4,034
18	996	1,139	531	264	353	314	177	118	113	906	4,911
19	932	1,093	529	310	357	311	164	113	103	976	4,888
20	807	999	498	356	343	263	147	88	90	888	4,479
21	744	891	498	477	296	265	112	87	69	809	4,248
22	708	851	400	403	260	229	111	86	83	731	3,862
23	638	758	405	444	242	176	97	73	57	713	3,603
24	640	674	370	364	226	148	112	66	74	642	3,316
25	620	682	347	386	222	178	103	82	56	627	3,303
26	613	650	360	443	191	143	97	70	52	645	3,264
27	596	633	357	410	216	125	98	65	63	675	3,238
28	589	622	331	430	177	129	82	56	58	639	3,113
29	550	626	321	443	210	108	106	74	52	580	3,070
30-34	2,668	2,595	1,518	1,877	846	423	392	305	218	2,743	13,585
35-39	2,226	2,001	1,091	1,245	720	235	304	241	205	2,174	10,442
40-44	1,828	1,464	792	749	487	149	211	163	128	1,687	7,658
45-49	1,298	925	572	458	332	95	144	111	86	1,158	5,179
50-54	1,021	657	376	257	258	45	113	62	55	818	3,662
55-59	897	460	282	183	237	21	79	71	40	647	2,917
60-64	858	332	244	151	215	20	65	54	45	584	2,568
65-69	906	288	228	108	218	16	43	44	40	533	2,424
70-74	853	224	185	61	236	8	39	44	19	507	2,176
75 & Over	1,571	227	190	40	340	12	35	35	46	704	3,200
Not Stated	1,433	2,197	844	121	720	539	169	249	195	6,546	13,013
<b>TOTAL</b>	<b>25,687</b>	<b>22,796</b>	<b>12,058</b>	<b>10,207</b>	<b>8,160</b>	<b>4,475</b>	<b>3,247</b>	<b>2,537</b>	<b>2,093</b>	<b>28,579</b>	<b>119,839</b>

Source: WSP

\*Investigated Collisions Only

\*\*Failure to Yield Right of Way

<b>MOTOR VEHICLE TRAFFIC COLLISIONS</b> By Investigating Agency - 1990					
	Investigating Agency				
	Washington State Patrol	Sheriff	Other Law Enforcement	Not Investigated	Total
<b>Collision Totals:</b>					
Total	37,735	12,458	52,149	29,714	132,056
Fatal	522	79	125	0	726
Injury	17,625	5,331	19,803	8,954	51,713
Property Damage	19,588	7,048	32,221	20,760	79,617
Freeway	9,935	174	572	3,261	13,942
Rural-State Route	12,200	671	768	2,694	16,333
County Road	12,419	9,750	184	5,116	27,469
Other Routes	3,181	1,863	50,625	18,643	74,312
Single Vehicle - All	15,381	3,957	5,826	1,479	26,643
Single Vehicle - Fatal	256	39	45	0	340
Multiple Vehicle - All	19,968	7,184	37,934	25,792	90,878
Multiple Vehicle - Fatal	199	31	36	0	266
<b>All Collisions - Main Causes:</b>					
Exceeding Legal or Safe Speed	16,915	3,416	6,940	*NA	27,271
Failure to Yield Right of Way	5,563	2,897	17,227		25,687
Driving While Intoxicated	5,096	1,339	3,772		10,207
Falling Asleep or Inattention	5,159	2,195	13,565		20,919
Following Too Close	4,729	1,271	6,058		12,058
Disregarding Signs or Signals	1,508	894	5,758		8,160
<b>Fatal Collisions - Main Causes:</b>					
Driving While Intoxicated	241	42	48	*NA	331
Exceeding Legal or Safe Speed	223	43	43		309
Failure to Yield Right of Way	35	7	19		61
Crossing Over Center Line	91	9	11		111
Disregarding Signs or Signals	40	8	16		64
Falling Asleep or Inattention	69	7	18		94

\*Driver violations come from investigated collisions only

Source: WSP

COLLISION RATES BY CITY POPULATION - 1990

City	Population	Traffic Deaths*		Traffic Injuries*		Total Collisions*	
		Number	Rate**	Number	Rate***	Number	Rate**
<b>250,000 and Over</b>							
1. Seattle	516,259	42	8.14	11,673	22.61	22,263	43.12
<b>100,000 to 250,000</b>							
1. Spokane	177,196	7	3.95	3,105	17.52	5,769	32.56
2. Tacoma	176,664	21	11.89	4,907	27.78	7,263	41.11
<b>50,000 to 100,000</b>							
1. Bellevue	86,874	4	4.60	1,523	17.53	3,047	35.07
2. Everett	69,961	11	15.72	1,823	26.06	3,157	45.13
3. Federal Way	67,304	9	13.37	1,152	17.12	1,803	26.79
4. Yakima	54,827	1	1.82	942	17.18	1,961	35.77
5. Bellingham	52,174	3	5.75	709	13.59	1,550	29.71
<b>25,000 to 50,000</b>							
1. Vancouver	46,380	3	6.47	741	15.98	1,550	33.42
2. Kennewick	42,159	1	2.37	536	12.71	1,043	24.74
3. Renton	41,688	5	11.99	1,021	24.49	2,177	52.22
4. Kirkland	40,052	1	2.50	717	17.90	1,382	34.51
5. Bremerton	38,142	5	13.11	591	15.49	1,270	33.30
6. Kent	37,960	7	18.44	1,127	29.69	1,997	52.61
7. Redmond	35,800	3	8.38	497	13.88	1,057	29.53
8. Olympia	33,840	1	2.96	673	19.89	1,408	41.61
9. Auburn	33,102	4	12.08	750	22.66	1,370	41.39
10. Richland	32,315	2	6.19	279	8.63	589	18.23
11. Longview	31,499	1	3.17	492	15.62	883	28.03
12. Edmonds	30,744	0	0.00	296	9.63	543	17.66
13. Lynnwood	28,695	3	10.45	755	26.31	1,529	53.28
14. Walla Walla	26,478	0	0.00	264	9.97	572	21.60
<b>15,000 to 25,000</b>							
1. Puyallup	23,875	3	12.57	376	15.75	762	31.92
2. Pullman	23,478	1	4.26	147	6.26	344	14.65
3. Sea Tac	22,694	0	0.00	585	25.78	874	38.51
4. Wenatchee	21,839	0	0.00	300	13.74	633	28.98
5. Mercer Island	20,816	2	9.61	184	8.84	370	17.77
6. Pasco	20,337	3	14.75	282	13.87	555	27.29
7. Mountlake Terrace	19,320	0	0.00	194	10.04	402	20.81
8. Lacey	19,279	0	0.00	302	15.66	625	32.42
9. Port Angeles	17,710	2	11.29	201	11.35	400	22.59
10. Mount Vernon	17,647	1	5.67	278	15.75	488	27.65
11. Des Moines	17,283	0	0.00	177	10.24	325	18.80
12. Oak Harbor	17,176	1	5.82	107	6.23	244	14.21
13. Aberdeen	16,565	2	12.07	204	12.32	606	36.58
<b>10,000 to 15,000</b>							
1. Ellensburg	12,361	0	0.00	87	7.04	214	17.31
2. Centralia	12,101	2	16.53	201	16.61	441	36.44
3. Bothell	11,986	0	0.00	129	10.76	270	22.53
4. Tukwila	11,874	7	58.95	958	80.68	1,601	134.83
5. Kelso	11,820	5	42.30	214	18.10	440	37.23
6. Anacortes	11,451	0	0.00	78	6.81	196	17.12
7. Sunnyside	11,238	0	0.00	81	7.21	165	14.68
8. Moses Lake	11,235	3	26.70	162	14.42	289	25.72
9. Marysville	10,328	1	9.68	207	20.04	427	41.34
<b>TOTAL</b>	<b>2,062,526</b>	<b>167</b>	<b>8.10</b>	<b>40,027</b>	<b>19.41</b>	<b>74,854</b>	<b>36.29</b>

Source: WSP, OFM

\*Does not include collisions occurring on the interstate system

\*\*Frequency per 100,000 population

\*\*\*Frequency per 1,000 population

COLLISION RATES BY COUNTY POPULATION - 1990							
County	Population	Traffic Deaths		Traffic Injuries		Total Collisions	
		Number	Rate*	Number	Rate**	Number	Rate**
Over 1,000,000							
1. King	1,507,319	170	11.28	27,362	18.15	49,666	32.95
250,000 to 750,000							
1. Pierce	586,203	85	14.50	10,620	18.12	15,906	27.13
2. Snohomish	465,642	76	16.32	7,477	16.06	12,248	26.30
3. Spokane	361,364	39	10.79	5,077	14.05	8,850	24.49
100,000 to 250,000							
1. Clark	238,053	36	15.12	3,263	13.71	5,449	22.89
2. Kitsap	189,731	39	20.56	2,591	13.66	4,444	23.42
3. Yakima	188,823	38	20.12	2,412	12.77	4,241	22.46
4. Thurston	161,238	17	10.54	2,269	14.07	4,196	26.02
5. Whatcom	127,780	21	16.43	1,848	14.46	3,344	26.17
6. Benton	112,560	22	19.55	1,103	9.80	2,126	18.89
50,000 to 100,000							
1. Cowlitz	82,119	23	28.01	1,161	14.14	2,164	26.35
2. Skagit	79,555	24	30.17	1,285	16.15	2,225	27.97
3. Grays Harbor	64,175	15	23.37	798	12.43	1,714	26.71
4. Island	60,195	8	13.29	548	9.10	950	15.78
5. Lewis	59,358	26	43.80	875	14.74	1,739	29.30
6. Clallam	56,464	17	30.11	634	11.23	1,155	20.46
7. Grant	54,758	24	43.83	685	12.51	1,032	18.85
8. Chelan	52,250	12	22.97	754	14.43	1,373	26.28
25,000 to 50,000							
1. Walla Walla	48,439	7	14.45	533	11.00	963	19.88
2. Whitman	38,775	7	18.05	421	10.86	744	19.19
3. Mason	38,341	11	28.69	548	14.29	943	24.60
4. Franklin	37,473	13	34.69	430	11.47	766	20.44
5. Okanogan	33,350	11	32.98	386	11.57	669	20.06
6. Stevens	30,948	16	51.70	352	11.37	540	17.45
7. Kittitas	26,725	11	41.16	543	20.32	1,110	41.53
8. Douglas	26,205	9	34.34	264	10.07	449	17.13
10,000 to 25,000							
1. Jefferson	20,146	3	14.89	290	14.39	502	24.92
2. Pacific	18,882	2	10.59	223	11.81	426	22.56
3. Asotin	17,605	1	5.68	108	6.13	219	12.44
4. Klickitat	16,616	13	78.24	254	15.29	348	20.94
5. Adams	13,603	9	66.16	221	16.25	380	27.94
6. San Juan	10,035	1	9.97	75	7.47	156	15.55
Under 10,000							
1. Pend Oreille	8,915	3	33.65	137	15.37	210	23.56
2. Lincoln	8,864	2	22.56	118	13.31	179	20.19
3. Skamania	8,289	2	24.13	167	20.15	211	25.46
4. Ferry	6,295	9	142.97	101	16.04	181	28.75
5. Columbia	4,024	3	74.55	58	14.41	115	28.58
6. Wahkiakum	3,327	0	0.00	33	9.92	73	21.94
7. Garfield	2,248	0	0.00	40	17.79	50	22.24
TOTAL	4,866,692	825	16.95	76,064	15.63	132,056	27.13

Source: WSP, OFM

\*Frequency per 100,000 population

\*\*Frequency per 1,000 population



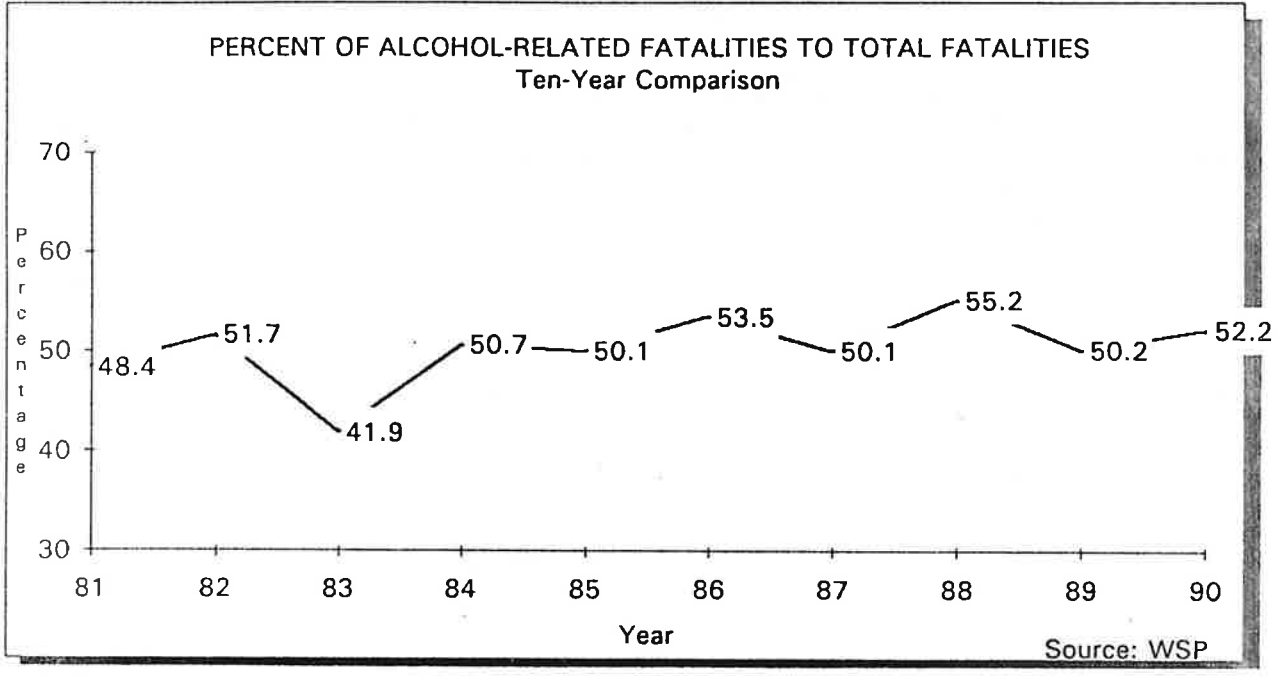
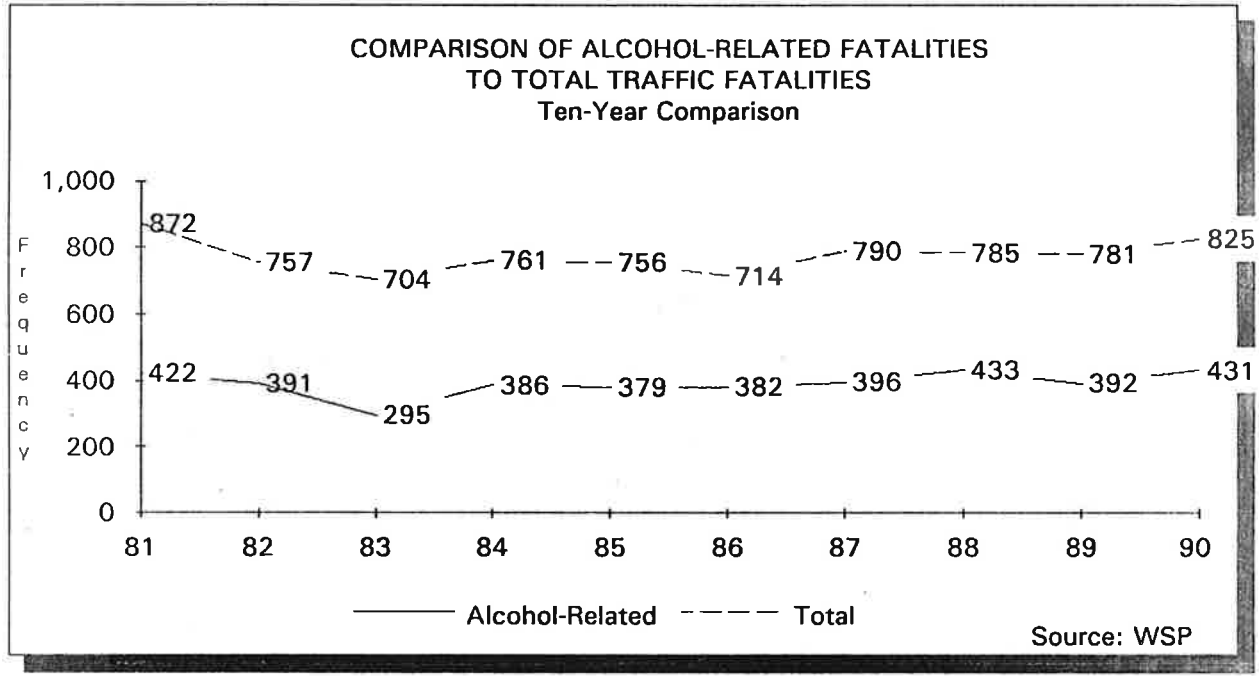
**TRAFFIC COLLISIONS AND COLLISIONS RATES IN UNINCORPORATED AREAS**  
By County & Population - 1990

County	Unincorp. Population	Total Collisions		Traffic Fatalities		Traffic Injuries		Pedestrians		Pedalcyclists	
		Number	Rate **	Number	Rate*	Number	Rate**	Fatals & Injuries	Rate*	Fatals & Injuries	Rate*
<b>Over 100,000</b>											
1. King	513,345	10,385	20.23	86	16.75	6,496	12.65	164	31.95	100	19.48
2. Pierce	339,920	7,011	20.63	55	16.18	4,888	14.38	78	22.95	58	17.06
3. Snohomish	259,757	5,531	21.29	61	23.48	3,851	14.83	41	15.78	8	3.08
4. Clark	173,879	3,624	20.84	32	18.40	2,386	13.72	29	16.68	39	22.43
5. Spokane	165,442	2,981	18.02	32	19.34	1,927	11.65	17	10.28	25	15.11
6. Kitsap	138,676	2,813	20.28	34	24.52	1,837	13.25	22	15.86	29	20.91
<b>25,000 to 100,000</b>											
1. Thurston	93,987	1,766	18.79	14	14.90	1,093	11.63	8	8.51	13	13.83
2. Yakima	88,241	1,710	19.38	37	41.93	1,225	13.88	10	11.33	9	10.20
3. Whatcom	59,187	1,583	26.75	18	30.41	1,057	17.86	12	20.27	8	13.52
4. Island	40,797	249	6.10	4	9.80	137	3.36	2	4.90	1	2.45
5. Skagit	37,797	1,145	30.29	23	60.85	736	19.47	13	34.39	8	21.17
6. Lewis	35,829	1,051	29.33	24	66.98	584	16.30	5	13.96	5	13.96
7. Cowlitz	33,117	796	24.04	17	51.33	435	13.14	3	9.06	3	9.06
8. Clallam	32,235	587	18.21	15	46.53	390	12.10	5	15.51	2	6.20
9. Mason	31,100	723	23.25	11	35.37	451	14.50	8	25.72	1	3.22
10. Benton	27,842	423	15.19	16	57.47	259	9.30	5	17.96	4	14.37
11. Grant	26,395	645	24.44	21	79.56	480	18.19	2	7.58	3	11.37
<b>10,000 to 25,000</b>											
1. Grays Harbor	24,987	834	33.38	13	52.03	493	19.73	8	32.02	3	12.01
2. Chelan	22,757	677	29.75	12	52.73	419	18.41	4	17.58	4	17.58
3. Stevens	22,644	477	21.07	16	70.66	330	14.57	2	8.83	5	22.08
4. Douglas	19,958	449	22.50	9	45.09	264	13.23	6	30.06	7	35.07
5. Okanogan	19,347	608	31.43	11	56.86	347	17.94	5	25.84	3	15.51
6. Franklin	14,712	211	14.34	10	67.97	148	10.06	0	0.00	0	0.00
7. Walla Walla	14,388	341	23.70	7	48.65	235	16.33	3	20.85	4	27.80
8. Jefferson	13,145	396	30.13	3	22.82	256	19.48	0	0.00	4	30.43
9. Pacific	12,356	382	30.92	2	16.19	207	16.75	6	48.56	2	16.19
10. Klickitat	10,791	329	30.49	13	120.47	241	22.33	2	18.53	0	0.00
11. Kittitas	10,417	896	86.01	11	105.60	456	43.77	1	9.60	0	0.00
<b>Under 10,000</b>											
1. Asotin	9,871	86	8.71	1	10.13	60	6.08	2	20.26	0	0.00
2. San Juan	8,543	156	18.26	1	11.71	75	8.78	3	35.12	3	35.12
3. Skamania	6,711	211	31.44	2	29.80	167	24.88	0	0.00	0	0.00
4. Whitman	6,677	359	53.77	6	89.86	267	39.99	2	29.95	2	29.95
5. Adams	6,466	302	46.71	9	139.19	187	28.92	2	30.93	0	0.00
6. Pend Oreille	6,114	210	34.35	3	49.07	137	22.41	1	16.36	0	0.00
7. Ferry	5,355	181	33.80	9	168.07	101	18.86	2	37.35	2	37.35
8. Lincoln	3,669	179	48.79	2	54.51	118	32.16	2	54.51	1	27.26
9. Wahkiakum	2,819	73	25.90	0	0.00	33	11.71	0	0.00	0	0.00
10. Columbia	1,386	96	69.26	3	216.45	58	41.85	0	0.00	0	0.00
11. Garfield	855	50	58.48	0	0.00	40	46.78	0	0.00	1	116.96
<b>TOTAL</b>	<b>2,341,514</b>	<b>50,526</b>	<b>21.58</b>	<b>643</b>	<b>27.46</b>	<b>32,871</b>	<b>14.04</b>	<b>475</b>	<b>738.72</b>	<b>357</b>	<b>555.21</b>

Source: WSP, OFM

\*Frequency per 100,000 population

\*\*Frequency per 1,000 population



**PERSONS KILLED & INJURED IN ALCOHOL-RELATED COLLISIONS**  
Two-Year Comparison

Status	Drivers Under the Influence			Drivers Who Had Been Drinking*			Non-Drinking Driver Collisions***		
	1990	1989	% of Change	1990	1989	% of Change	1990	1989	% of Change
Persons Killed	371	353	5.1%	431	392	9.9%	398	389	2.3%
Persons Injured:									
Disabling	1,801	1,840	-2.1%	2,476	2,595	-4.6%	5,094	5,280	-3.5%
Non-Disabling	4,322	4,316	0.1%	6,486	6,516	-0.5%	17,748	17,927	-1.0%
Possible Injury	2,893	2,742	5.5%	4,787	4,549	5.2%	28,478	25,956	9.7%
Total Injured	9,016	8,898	1.3%	13,749	13,660	0.7%	51,320	49,163	4.4%
Property Damage Clsns**	3,963	3,888	1.9%	6,959	7,000	-0.6%	51,898	48,920	6.1%
Total Collisions	9,887	9,816	0.7%	15,998	16,061	-0.4%	86,344	82,237	5.0%

\* Including drivers Under the Influence

Source: WSP

\*\* Minimum damage for a reportable collision was increased from \$300 to \$500 on 10-1-87

\*\*\* Investigated collisions only

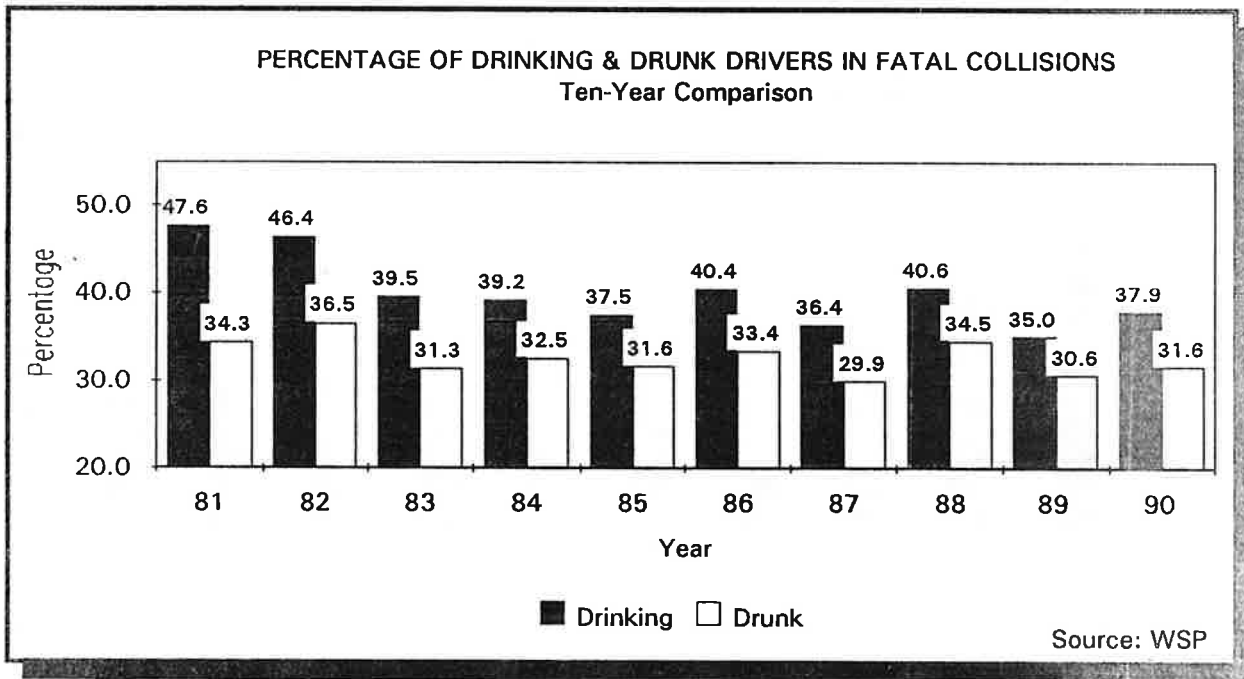
**PERSONS KILLED & INJURED IN ALCOHOL-RELATED COLLISIONS**  
Three-Year Comparison by Month

Month	Drivers "Under the Influence"						Drivers Who "Had Been Drinking"					
	Persons Killed			Persons Injured			Persons Killed			Persons Injured		
	1990	1989	1988	1990	1989	1988	1990	1989	1988	1990	1989	1988
January	31	25	17	715	617	491	34	26	18	1,086	976	866
February	27	11	27	608	433	554	30	11	28	889	702	876
March	34	19	42	725	566	669	37	20	47	1,107	920	1,053
April	28	25	27	700	689	684	31	29	36	1,046	1,066	1,130
May	32	42	39	726	784	785	39	46	47	1,126	1,196	1,284
June	34	24	47	850	782	722	40	27	50	1,287	1,185	1,133
July	38	40	37	763	864	842	45	42	45	1,229	1,335	1,372
August	31	31	30	869	744	715	41	36	35	1,373	1,202	1,170
September	37	40	35	923	825	687	41	45	38	1,256	1,264	1,173
October	31	33	27	745	842	756	34	43	32	1,152	1,261	1,321
November	23	32	30	679	862	684	30	33	35	1,119	1,292	1,126
December	25	31	18	713	890	770	29	34	22	1,079	1,261	1,220
<b>TOTAL</b>	<b>371</b>	<b>353</b>	<b>376</b>	<b>9,016</b>	<b>8,898</b>	<b>8,359</b>	<b>431</b>	<b>392</b>	<b>433</b>	<b>13,749</b>	<b>13,660</b>	<b>13,724</b>

Source: WSP

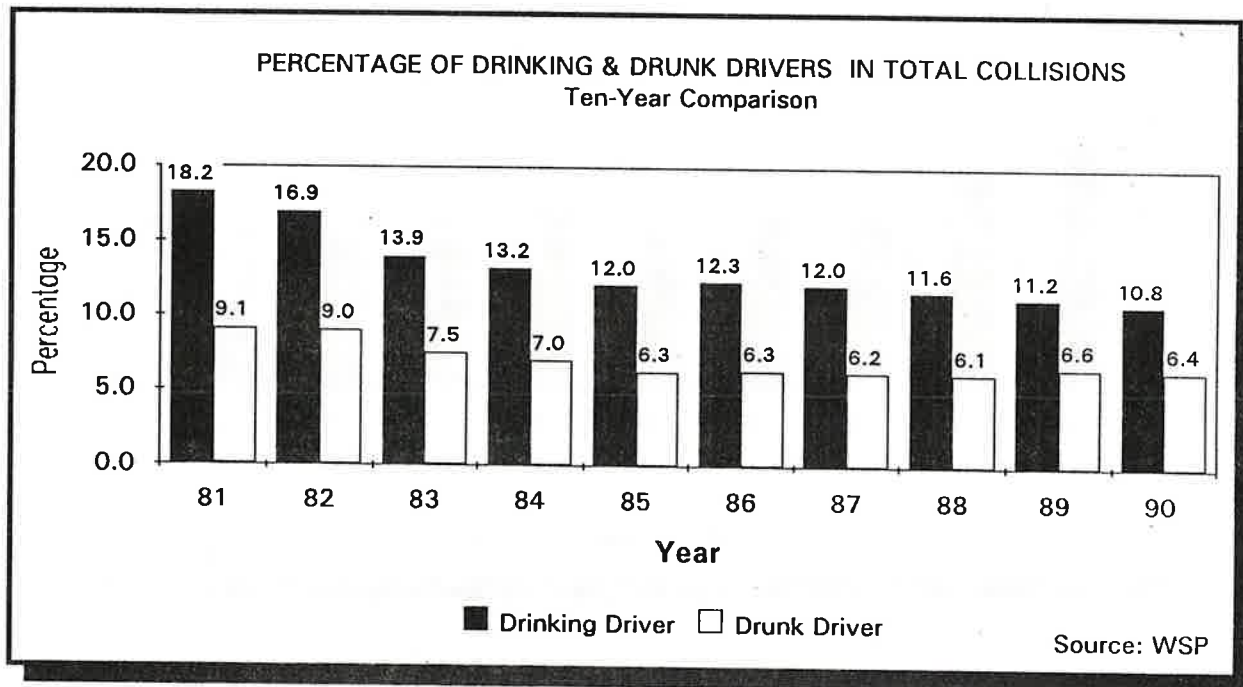
SOBRIETY OF DRIVERS IN FATAL COLLISIONS Comparisons with Previous Years					
Sobriety of Driver	Year		Previous 3 -Year Average	1990 Change	
	1990	1989		From 1989	From 3-Year Avg
Had been drinking - ability impaired	324	309	315	4.9%	2.9%
Had been drinking - ability not impaired	41	33	39	24.2%	4.2%
Had been drinking - sobriety unknown	23	12	17	91.7%	35.3%
Had not been drinking	636	657	624	-3.2%	1.9%
Not stated	45	37	41	21.6%	8.9%
Total drivers drinking	388	354	371	9.6%	4.5%
Total drivers - excluding not stated	1,024	1,011	996	1.3%	2.8%
Total drivers	1,069	1,048	1,037	2.0%	3.1%
Number drinking drivers per 100 involved	37.9	35.0	37.3	8.2%	1.5%
Number drunk drivers per 100 involved	31.6	30.6	31.6	3.5%	0.0%

Source: WSP



SOBRIETY OF DRIVERS INVOLVED IN INVESTIGATED COLLISIONS Comparisons with Previous Years					
Sobriety of Driver	Year		Previous 3-Year Average	1990 Change	
	1990	1989		From 1989	From 3-Year Avg
Had been drinking - ability impaired	9,973	9,901	9,629	0.7%	3.6%
Had been drinking - ability not impaired	3,118	3,184	3,367	-2.1%	-7.4%
Had been drinking - sobriety unknown	3,669	3,671	4,703	-0.1%	-22.0%
Had not been drinking	138,604	132,731	134,533	4.4%	3.0%
Not stated	21,569	19,181	17,580	12.4%	22.7%
Total drivers drinking	16,760	16,756	17,699	0.0%	-5.3%
Total drivers - excluding not stated	155,364	149,487	152,232	3.9%	2.1%
Total drivers	176,933	168,668	169,812	4.9%	4.2%
Number drinking drivers per 100 involved	10.8	11.2	11.6	-3.8%	-7.2%
Number drunk drivers per 100 involved	6.4	6.6	6.3	-3.1%	1.4%

Source: WSP



SOBRIETY OF DRIVERS INVOLVED IN INJURY COLLISIONS Comparisons with Previous Years					
Sobriety of Driver	Year		Previous 3 -Year Average	1990 Change	
	1990	1989		From 1989	From 3-Year Avg.
Had been drinking - ability impaired	5,669	5,677	5,364	-0.1%	5.7%
Had been drinking - ability not impaired	1,547	1,620	1,665	-4.5%	-7.1%
Had been drinking - sobriety unknown	1,868	1,796	2,087	4.0%	-10.5%
Had not been drinking	60,603	58,541	57,695	3.5%	5.0%
Not stated	6,454	5,812	5,355	11.0%	20.5%
Total drivers drinking	9,084	9,093	9,116	-0.1%	-0.4%
Total drivers - excluding not stated	69,687	67,634	66,812	3.0%	4.3%
Total drivers	76,141	73,446	72,167	3.7%	5.5%
No. drinking drivers per 100 involved	13.0	13.4	13.7	-3.0%	-4.6%
No. drunk drivers per 100 involved	8.1	8.4	8.0	-3.1%	1.3%

Source: WSP

DRIVERS INVOLVED IN ALCOHOL-RELATED COLLISIONS Compared with Drivers in All Collisions By Driver Age and Miles Traveled - 1990					
Driver Age	% of Vehicle Miles Traveled *	Drivers in All Collisions		Drivers in Alcohol-Related Collisions	
		%	Over/Under Ratio	%	Over/Under Ratio
16-17	1.44	5.20%	3.61	2.48%	1.72
18-20	5.55	10.77%	1.94	10.68%	1.93
21-24	12.58	12.05%	0.96	17.79%	1.41
25-34	29.24	27.39%	0.94	38.55%	1.32
35-44	21.18	20.06%	0.95	18.63%	0.88
45-54	12.97	10.69%	0.82	6.29%	0.49
55-64	11.58	6.53%	0.56	3.19%	0.28
65 & Over	5.34	7.31%	1.37	2.37%	0.44

Source: WSP, USDOT

\* From Nationwide Personal Transportation Study - USDOT, 1983-84

**COMPARISON OF ALCOHOL-RELATED COLLISIONS  
By Motor Vehicle Travel By County - 1990**

County	Collisions				By Type of Roadway			
	Total	%	% of Motor Veh Travel	Over/Under Ratio	City Streets	State Routes	County Roads	Other Roads
Adams	41	0.26%	0.99%	0.26	9	21	11	0
Asotin	38	0.24%	0.30%	0.79	18	13	6	1
Benton	249	1.56%	2.85%	0.55	138	64	47	0
Chelan	180	1.13%	1.18%	0.95	60	64	53	3
Clallam	157	0.98%	1.24%	0.79	38	75	40	4
Clark	725	4.53%	4.35%	1.04	146	191	387	1
Columbia	20	0.13%	0.16%	0.78	2	8	6	4
Cowlitz	290	1.81%	2.57%	0.71	132	87	70	1
Douglas	63	0.39%	0.58%	0.68	3	46	14	0
Ferry	51	0.32%	0.17%	1.88	0	23	25	3
Franklin	138	0.86%	1.15%	0.75	82	30	26	0
Garfield	5	0.03%	0.14%	0.22	0	3	2	0
Grant	174	1.09%	2.02%	0.54	43	65	63	3
Grays Harbor	300	1.88%	1.87%	1.00	75	140	78	7
Island	138	0.86%	0.69%	1.25	13	36	87	2
Jefferson	96	0.60%	0.48%	1.25	15	34	46	1
King	4,530	28.32%	29.15%	0.97	2,134	1,613	764	19
Kitsap	721	4.51%	2.69%	1.68	134	207	371	9
Kittitas	133	0.83%	2.04%	0.41	27	72	29	5
Klickitat	63	0.39%	0.60%	0.66	6	34	23	0
Lewis	230	1.44%	2.06%	0.70	47	96	85	2
Lincoln	25	0.16%	0.62%	0.25	1	18	6	0
Mason	197	1.23%	0.82%	1.50	27	78	89	3
Okanogan	138	0.86%	0.62%	1.39	19	44	66	9
Pacific	92	0.58%	0.53%	1.09	12	49	29	2
Pend Oreille	42	0.26%	0.27%	0.97	2	22	18	0
Pierce	2,122	13.26%	19.81%	0.67	747	675	683	17
San Juan	44	0.28%	0.05%	5.50	7	0	37	0
Skagit	323	2.02%	2.14%	0.94	104	129	89	1
Skamania	48	0.30%	0.24%	1.25	1	21	14	12
Snohomish	1,729	10.81%	6.96%	1.55	476	612	633	8
Spokane	934	5.84%	8.12%	0.72	460	212	255	7
Stevens	94	0.59%	0.71%	0.83	7	46	40	1
Thurston	503	3.14%	3.66%	0.86	171	109	220	3
Wahkiakum	13	0.08%	0.14%	0.58	0	12	1	0
Walla Walla	130	0.81%	0.83%	0.98	60	30	40	0
Whatcom	447	2.79%	2.30%	1.21	140	137	168	2
Whitman	63	0.39%	1.13%	0.35	13	23	27	0
Yakima	712	4.45%	3.75%	1.19	297	125	276	14
<b>TOTAL</b>	<b>15,998</b>				<b>5666</b>	<b>5264</b>	<b>4924</b>	<b>144</b>

Source: WSP

**TOXICOLOGIST RESULTS OF DRIVERS KILLED IN FATAL COLLISIONS**  
**Five-Year Comparison - By Age**

Age	BAC of .00					BAC of .01 to .09					BAC of .10 and Over					Average BAC (not including .00)				
	'90	'89	'88	'87	'86	'90	'89	'88	'87	'86	'90	'89	'88	'87	'86	'90	'89	'88	'87	'86
16	5	2	5	5	6	2	0	1	0	3	1	0	1	0	3	0.07	0.00	0.11	0.00	0.10
17	6	4	5	8	9	1	1	2	1	2	0	3	1	0	4	0.05	0.11	0.06	0.03	0.13
18	8	7	11	8	10	0	2	4	5	0	4	5	2	3	5	0.13	0.13	0.08	0.10	0.18
19	8	10	6	6	5	0	2	5	2	3	4	6	3	3	11	0.17	0.12	0.10	0.13	0.17
20	10	10	4	5	7	3	3	2	1	1	4	7	7	4	9	0.15	0.15	0.14	0.15	0.17
21	3	1	4	2	3	1	0	1	2	3	12	11	7	14	12	0.17	0.20	0.16	0.19	0.16
22	10	8	5	3	6	2	3	1	4	1	8	5	12	8	6	0.14	0.12	0.15	0.18	0.14
23	3	3	3	5	5	0	1	2	0	2	10	9	7	14	5	0.26	0.19	0.17	0.20	0.17
24	4	4	3	1	3	1	1	0	1	1	7	6	4	9	5	0.18	0.16	0.20	0.14	0.17
25	5	2	4	6	10	1	0	2	4	0	10	3	15	7	10	0.17	0.20	0.19	0.13	0.20
26	5	1	7	5	2	0	1	2	2	1	10	7	4	14	6	0.21	0.19	0.14	0.15	0.15
27	3	7	4	1	2	2	1	1	2	0	5	8	5	9	10	0.14	0.18	0.18	0.16	0.23
28	7	6	2	4	3	1	4	2	0	1	5	12	7	3	6	0.15	0.16	0.14	0.20	0.17
29	5	1	4	6	4	2	1	3	2	0	8	7	6	6	6	0.19	0.20	0.15	0.17	0.18
30	3	3	1	3	2	0	0	1	0	3	9	9	7	3	3	0.22	0.20	0.17	0.25	0.15
31	3	4	4	3	3	2	0	0	0	2	8	10	5	3	8	0.19	0.19	0.19	0.21	0.18
32	1	4	4	3	3	0	1	0	0	3	8	3	12	5	4	0.22	0.18	0.19	0.19	0.13
33	0	4	6	2	1	1	1	0	0	1	5	6	3	5	5	0.19	0.20	0.13	0.18	0.19
34	2	6	3	2	3	0	0	0	0	0	5	4	5	1	1	0.25	0.28	0.21	0.11	0.17
35	6	8	2	4	2	1	0	1	1	1	5	7	6	2	2	0.18	0.17	0.17	0.18	0.13
36	4	4	2	4	3	1	2	0	0	2	6	3	9	9	3	0.15	0.13	0.21	0.23	0.13
37	3	4	5	2	2	0	0	0	1	0	4	2	6	1	5	0.24	0.14	0.17	0.07	0.20
38	3	2	1	1	3	1	0	2	0	0	5	0	5	3	2	0.18		0.15	0.29	0.16
39	2	2	2	1	0	1	0	0	0	1	3	2	3	4	1	0.17	0.22	0.16	0.20	0.11
40	3	2	2	2	1	1	0	0	0	0	5	4	3	2	6	0.18	0.15	0.15	0.28	0.17
41-45	16	16	11	14	5	1	1	4	2	2	14	10	13	10	8	0.17	0.21	0.13	0.18	0.17
46-50	13	10	4	6	3	1	3	1	0	1	7	6	7	10	6	0.23	0.16	0.17	0.18	0.25
51-55	13	5	4	8	6	0	0	1	0	0	6	5	5	6	3	0.18	0.22	0.18	0.25	0.19
56-60	6	12	7	7	9	0	0	0	0	2	4	1	3	2	3	0.23	0.24	0.21	0.24	0.12
61-65	5	6	4	9	8	1	0	0	0	0	1	3	4	6	4	0.11	0.20	0.21	0.18	0.20
66-Ovr	23	39	27	18	23	3	1	1	2	4	2	1	3	2	3	0.14	0.18	0.14	0.12	0.15
TOTAL	188	197	156	154	152	30	29	39	32	40	185	165	180	168	165	0.17	0.18	0.17	0.18	0.17
Percent	46.7	50.4	41.5	42.7	41.8	7.4	7.4	10.6	8.9	11.0	45.9	42.2	47.9	46.5	45.3					

Source: WSP



TEENAGE DRIVER COLLISIONS - 19 YEARS & YOUNGER Five-Year Comparison							
Collisions & Rates	Year					Previous 4 Year Average	% Change 90 - 4 Year Average
	1990	1989	1988	1987	1986		
Total Collisions	23,965	25,312	27,017	28,575	27,110	27,004	-11.3%
Teenage Drivers Involved	25,775	27,263	29,348	31,084	29,346	29,260	-11.9%
Fatal Collisions	112	108	125	131	148	128	-12.5%
Injury Collisions	10,265	10,821	11,254	11,379	11,013	11,117	-7.7%
Licensed Drivers	169,377	186,237	190,610	186,587	181,922	186,339	-9.1%
Fatal Collision Ratio *	4.67	4.27	4.63	4.58	5.46	4.73	-1.3%
Fatal Rate**	0.66	0.58	0.66	0.70	0.81	0.69	-3.9%
Total Collision Rate***	15.22	14.64	15.40	16.66	16.13	15.71	-3.1%

\* Fatal Collisions per 1,000 total collisions

\*\* Fatal Collisions per 1,000 licensed drivers

\*\*\* Teenage drivers involved per 100 licensed

Source: WSP, DOL

TEENAGE DRIVER COLLISIONS (19 YEARS & YOUNGER) Contributing Circumstances by Age - 1990										
Contributing Circumstances*	16 & Younger		17 Years		18 Years		19 Years		Total	
	Number	%	Number	%	Number	%	Number	%	Number	%
Speed--Too Fast For Conditions	823	23.2%	956	23.7%	1,139	23.2%	1,093	22.4%	4,011	23.1%
Failure to Yield Right of Way	783	22.1%	888	22.0%	996	20.3%	932	19.1%	3,599	20.7%
Following Too Closely	318	9.0%	459	11.4%	531	10.8%	529	10.8%	1,837	10.6%
Exceeding Legal Speed	258	7.3%	260	6.4%	314	6.4%	311	6.4%	1,143	6.6%
Disregarding Traffic Sig./Signs	208	5.9%	241	6.0%	353	7.2%	357	7.3%	1,159	6.7%
Driving Under the Influence	90	2.5%	119	2.9%	264	5.4%	310	6.3%	783	4.5%
Operating Defective Equipment	112	3.2%	130	3.2%	177	3.6%	164	3.4%	583	3.4%
Crossing Over the Center Line	83	2.3%	96	2.4%	118	2.4%	113	2.3%	410	2.4%
Improper Passing	68	1.9%	76	1.9%	113	2.3%	103	2.1%	360	2.1%
All Other Circumstances +	797	22.5%	809	20.1%	906	18.4%	976	20.0%	3,488	20.1%
<b>TOTAL</b>	<b>3,540</b>	<b>100.0%</b>	<b>4,034</b>	<b>100.0%</b>	<b>4,911</b>	<b>100.0%</b>	<b>4,888</b>	<b>100.0%</b>	<b>17,373</b>	<b>100.0%</b>

\* Investigated collisions only

+ Including driver inattention

Source: WSP

SENIOR DRIVERS (55 YEARS & OLDER) INVOLVED IN COLLISIONS Five-Year Comparison							
Collisions & Rates	Year					Previous 4-Year Average	% Change 90 - 4-Year Average
	1990	1989	1988	1987	1986		
Senior drivers involved in:							
Total Collisions	28,103	26,873	26,584	26,482	25,842	26,445	6.3%
Fatal Collisions	157	174	148	157	140	155	1.5%
Injury Collisions	10,937	10,559	10,197	9,634	9,560	9,988	9.5%
Senior Drivers Licenced	781,620	780,607	763,079	741,653	719,784	751,281	4.0%
Fatal Collision Ratio *	5.59	6.47	5.57	5.93	5.42	5.85	-4.4%
Fatal Rate +	0.20	0.22	0.19	0.21	0.19	0.20	-1.8%
Total Collision Rate **	3.60	3.44	3.48	3.57	3.59	3.52	2.1%

\* Fatal collisions per 1,000 total collisions

+ Fatal collisions per 1,000 licensed drivers

\*\* Drivers involved per 100 licensed

Source: WSP, DOL

SENIOR DRIVER INVOLVEMENT IN INVESTIGATED COLLISIONS Contributing Circumstances By Age Group - 1990										
Contributing Circumstances	55-59		60-64		65-69		70-74		75 & Older	
	Number	%	Number	%	Number	%	Number	%	Number	%
Failure to Yield Right of Way	897	31.2%	858	34.0%	906	38.0%	853	39.5%	1,571	49.8%
Speed--Too Fast For Conditions	460	16.0%	332	13.2%	288	12.1%	224	10.4%	227	7.2%
Disregarding Traffic Signal/Signs	237	8.2%	215	8.5%	218	9.1%	236	10.9%	340	10.8%
Following Too Closely	282	9.8%	244	9.7%	228	9.6%	185	8.6%	190	6.0%
Driving While Under the Influence	183	6.4%	151	6.0%	108	4.5%	61	2.8%	40	1.3%
Operating Defective Equipment	79	2.7%	65	2.6%	43	1.8%	39	1.8%	35	1.1%
Crossing Over the Centerline	71	2.5%	54	2.1%	44	1.8%	44	2.0%	35	1.1%
Exceeding Legal Speed	21	0.7%	20	0.8%	16	0.7%	8	0.4%	12	0.4%
All Other Circumstances +	647	22.5%	584	23.1%	533	22.4%	507	23.5%	704	22.3%
TOTAL	2,877	100.0%	2,523	100.0%	2,384	100.0%	2,157	100.0%	3,154	100.0%

+ Including driver inattention

Source: WSP

RESTRAINT USAGE RATE*										
Five-Year Comparison										
Status	1990	%	1989	%	1988	%	1987	%	1986**	%
Restrains Used	176,241	84.9%	159,592	80.8%	161,667	80.0%	152,413	77.6%	102,751	54.5%
No Restrains Used	31,354	15.1%	37,802	19.2%	40,387	20.0%	44,081	22.4%	85,669	45.5%
TOTAL	207,595	100.0%	197,394	100.0%	202,054	100.0%	196,494	100.0%	188,420	100.0%

Source: WSP

\* Percent of occupants using restraints among all occupants involved in collisions where usage is known.

\*\* Seat belt law was implemented in June, 1986.

RESTRAINT USAGE & INJURIES SUSTAINED* - 1990								
Type	Restrains Used		Child Restrains**		No Restrains		Total Occupants +	
	Number	%	Number	%	Number	%	Number	%
Deaths	165	0.1%	3	0.1%	458	1.5%	623	0.3%
Disabling Injuries	2,925	1.7%	20	0.7%	2,450	7.8%	5,375	2.6%
Evident Injuries	12,669	7.2%	169	5.5%	6,780	21.6%	19,449	9.4%
Possible Injuries	24,452	13.9%	200	6.6%	4,957	15.8%	29,409	14.2%
No Injuries	136,009	77.2%	2,661	87.2%	16,695	53.3%	152,704	73.6%
TOTAL	176,220	100.0%	3,053	100.0%	31,340	100.0%	207,560	100.0%

Source: WSP

\* Excludes cases where injury severity was not stated or where restraint use was unknown.

\*\* Included with Restrains Used Category.

+ Does not include 35 occupants where the injury data was unknown.

TYPES OF RESTRAINTS USED												
By Severity of Injury - 1990												
Type	Number Used		Deaths		Disabling Injury		Evident Injury		Possible Injury		No Injury	
	#	%	#	%	#	%	#	%	#	%	#	%
Lap Belt	28,387	13.7%	30	4.8%	475	8.8%	2,360	12.1%	3,323	11.3%	22,199	14.5%
Shoulder Belt	5,211	2.5%	4	0.6%	95	1.8%	396	2.0%	572	1.9%	4,144	2.7%
Lap & Shoulder Belt	139,400	67.2%	127	20.4%	2,327	43.3%	9,709	49.9%	20,328	69.1%	106,909	70.0%
Child Restraint	3,053	1.5%	3	0.5%	20	0.4%	169	0.9%	200	0.7%	2,661	1.7%
Air Bag**/Belted	117	0.1%	0	0.0%	6	0.1%	32	0.2%	22	0.1%	57	0.0%
Air Bag**/No Belt	52	*	1	*	2	*	3	*	7	*	39	*
No Restrains	31,340	15.1%	458	73.5%	2,450	45.6%	6,780	34.9%	4,957	16.9%	16,695	10.9%
TOTAL OCCUPANTS	207,560	100.0%	623	100.0%	5,375	100.0%	19,449	100.0%	29,409	100.0%	152,704	100.0%

Source: WSP

\* Less than 1/10 of 1 percent

\*\* Activated

Restraint usage rates in this summary are based upon data collected by enforcement officers when investigating collisions. When direct observation is impossible, the officer must question those involved as to their seat belt use. Since Washington has a mandatory seat belt use law, the human tendency to report compliance, when in fact no belt was worn, artificially inflates the usage rate. The latest observational data available shows overall restraint use at 55% based upon a 1989 observation survey of shoulder belt use by front seat occupants.

USAGE RATES BY SEX*					
Five-Year Comparison					
Occupant	Percent Used Restraints				
	1990	1989	1988	1987	1986
Male Driver	85.5	81.4	80.3	77.8	54.0
Female Driver	89.4	86.0	85.5	83.3	59.6
Male Passenger	76.4	71.9	70.9	69.0	46.7
Female Passenger	83.4	79.0	78.5	75.9	55.0

Source: WSP

\*Excludes occupants where restraint use was unknown

USAGE RATES BY AGE*					
Five-Year Comparison					
Occupant	Percent Used Restraints				
	1990	1989	1988	1987	1986
Age 0-5	89.1	85.8	86.6	85.6	81.0
Age 6-15	79.9	75.3	74.2	72.5	51.5
Age 16-19	79.7	74.8	74.5	71.6	44.2
Age 20-24	81.6	76.4	75.8	72.7	47.5
Age 25-34	84.2	80.6	79.5	77.4	55.3
Age 35-64	89.0	85.8	85.0	82.9	60.6
Age 65 & Up	88.5	85.1	84.5	82.6	58.2

Source: WSP

\*Excludes occupants where restraint use was unknown

MOTORCYCLE COLLISIONS SUMMARY							
Five-Year Comparison							
Collision Severity/Exposure & Rates	Year					Previous 4-Year Average	'90 Change from 4-Year Avg
	1990	1989	1988	1987	1986		
Total Collisions	2,167	2,516	2,773	3,379	3,508	3,044	-28.81%
Fatal Collisions	60	70	72	88	80	78	-22.58%
Fatal Collision Ratio *	27.7	27.8	26.0	26.0	22.8	26	7.96%
Motorcycle Registration	103,537	110,617	117,155	124,215	122,751	118,685	-12.76%
Total Collision Registration Rate **	2.09	2.27	2.37	2.72	2.86	2.55	-18.08%
Fatal Registration Rate ***	0.580	0.633	0.615	0.708	0.652	0.652	-11.10%
Total Persons Killed	62	75	77	90	81	81	-23.22%
Total Persons Injured	2,223	2,724	2,896	3,497	3,673	3,198	-30.48%
Motorcycle Drivers Killed	55	59	66	86	71	71	-21.99%
Motorcycle Drivers Injured	1,789	2,119	2,320	2,729	2,909	2,519	-28.99%
Motorcycle Passengers Killed	5	10	10	3	9	8	-37.50%
Motorcycle Passengers Injured	272	392	383	513	518	452	-39.76%

\*Fatal Collisions per 1,000 motorcycle collisions

Source: WSP, DOL

\*\*Motorcycle involved per 100 registered

\*\*\*Fatal Collisions per 1,000 motorcycles registered

MOTORCYCLE COLLISIONS BY LOCATION						
Two-Year Comparison						
Severity of Collision	1990			1989		
	Urban	Rural	Statewide	Urban	Rural	Statewide
Total Collisions	1,207	960	2,167	1,417	1,099	2,516
Fatal Collisions	12	48	60	23	47	70
Injury Collisions	1,011	829	1,840	1,206	965	2,171
Property-damage-only Collisions	184	83	267	188	87	275
Total Fatalities	13	49	62	25	50	75
All Persons Injured	1,188	1,035	2,223	1,485	1,239	2,724
Motorcyclists Killed	12	48	60	23	46	69
Motorcyclists Injured	1,106	955	2,061	1,376	1,135	2,511

Source: WSP

PEDALCYCLE TRAFFIC COLLISIONS Five-Year Comparison							
Severity	Year					Previous 4 -Year Average	% Change 90 - 4-Year Average
	1990	1989	1988	1987	1986		
Statewide:							
Total Collisions	1,364	1,303	1,348	1,575	1,507	1,433	-4.83%
Persons Killed *	14	8	12	18	12	13	12.00%
Persons Injured *	1,362	1,331	1,375	1,584	1,538	1,457	-6.52%
Rural Areas:							
Total Collisions	377	392	439	550	491	468	-19.4%
Persons Killed *	10	6	6	15	6	8	21.2%
Persons Injured *	379	402	450	559	510	480	-21.1%
Urban Areas:							
Total Collisions	987	911	909	1,025	1,016	965	2.3%
Persons Killed *	4	2	6	3	6	4	-5.9%
Persons Injured *	983	929	925	1,025	1,028	977	0.6%

\*In pedalcycle collisions by first harmful event

Source: WSP

PEDALCYCLISTS KILLED AND INJURED BY AGE Five-Year Comparison							
Age	Year					Previous 4 -Year Average	% of Change 90 - 4-Year Average
	1990	1989	1988	1987	1986		
0-4	16	14	23	23	20	20.0	-20.0%
5-9	191	233	215	288	268	251.0	-23.9%
10-14	381	355	368	447	446	404.0	-5.7%
15-19	194	215	253	304	297	267.3	-27.4%
20-24	163	130	155	157	177	154.8	5.3%
25-34	213	185	158	169	173	171.3	24.4%
35-44	96	69	73	64	56	65.5	46.6%
45-54	35	31	33	22	18	26.0	34.6%
55-64	18	14	18	14	12	14.5	24.1%
65-74	9	7	9	17	7	10.0	-10.0%
75 & Older	5	3	4	2	2	2.8	---
Not Stated	42	51	49	63	43	51.5	---
TOTAL	1,363	1,307	1,358	1,570	1,519	1,438.5	-5.2%

Source: WSP

PEDESTRIANS KILLED & INJURED IN VEHICLE COLLISIONS Five-Year Comparison					
Severity by Area	Year				
	1990	1989	1988	1987	1986
<b>Statewide:</b>					
Pedestrians Killed	80	110	97	93	94
Pedestrians Injured	1,861	1,858	1,820	1,830	1,843
<b>Rural Areas:</b>					
Pedestrians Killed	42	70	51	39	52
Pedestrians Injured	463	493	497	468	468
<b>Urban Areas:*</b>					
Pedestrians Killed	38	40	46	54	42
Pedestrians Injured	1,398	1,365	1,323	1,362	1,375

\*2,500 population and greater

ACTIONS OF PEDESTRIANS KILLED & INJURED Urban and Rural Areas - 1990										
Action	Killed		Killed/Injured		Age					Number Not Stated
	Number	%	Number	%	0-4	5-14	15-24	25-64	65+	
<b>Urban:</b>										
Crossing at intersection	13	34.2%	721	50.1%	14	132	122	316	111	26
Not at intersection	17	44.7%	455	31.6%	37	145	80	134	40	19
Walking with traffic	0	0.0%	11	0.8%	0	1	6	3	1	0
Walking against traffic	0	0.0%	8	0.6%	0	2	1	5	0	0
Standing or working in roadway	2	5.3%	74	5.1%	2	4	13	44	4	7
Playing in roadway	0	0.0%	17	1.2%	4	12	0	1	0	0
Lying in roadway	1	2.6%	6	0.4%	0	0	3	3	0	0
Not in roadway	0	0.0%	79	5.5%	2	11	25	31	3	7
Other & Not Stated	5	13.2%	68	4.7%	3	11	15	30	6	3
<b>TOTAL URBAN</b>	<b>38</b>	<b>100.0%</b>	<b>1,439</b>	<b>100.0%</b>	<b>62</b>	<b>318</b>	<b>265</b>	<b>567</b>	<b>165</b>	<b>62</b>
<b>% of Total Killed or Injured</b>					<b>4.3%</b>	<b>22.1%</b>	<b>18.4%</b>	<b>39.4%</b>	<b>11.5%</b>	<b>4.3%</b>
<b>Rural:</b>										
Crossing, entering roadway at intersection	5	11.9%	92	18.2%	2	24	13	35	12	6
Not at intersection	12	28.6%	174	34.5%	8	80	30	42	10	4
Walking with traffic	7	16.7%	28	5.5%	3	4	10	7	4	0
Walking against traffic	1	2.4%	12	2.4%	0	4	3	5	0	0
Standing or working in roadway	5	11.9%	66	13.1%	0	6	16	38	4	2
Playing in roadway	0	0.0%	13	2.6%	1	10	2	0	0	0
Lying in roadway	4	9.5%	9	1.8%	0	0	4	5	0	0
Not in roadway	7	16.7%	79	15.6%	1	8	28	39	2	1
Other & Not Stated	1	2.4%	32	6.3%	1	5	11	13	1	1
<b>TOTAL RURAL</b>	<b>42</b>	<b>100.0%</b>	<b>505</b>	<b>100.0%</b>	<b>16</b>	<b>141</b>	<b>117</b>	<b>184</b>	<b>33</b>	<b>14</b>
<b>% of Total Killed or Injured</b>					<b>3.2%</b>	<b>27.9%</b>	<b>23.2%</b>	<b>36.4%</b>	<b>6.5%</b>	<b>2.8%</b>

Source: WSP

