

The logo features the word "TARGET" in green and "ZERO" in grey. The "O" in "ZERO" is replaced by a stylized road with a white dashed line curving through a green circle.

TARGET ZERO

HIGH VISIBILITY ENFORCEMENT PROGRAM PRESENTATION TO THE WA TRAFFIC SAFETY COMMISSION

JERRY NOVIELLO
PROGRAM MANAGER – WTSC
JULY 18, 2024

1

WHAT IS HVE?



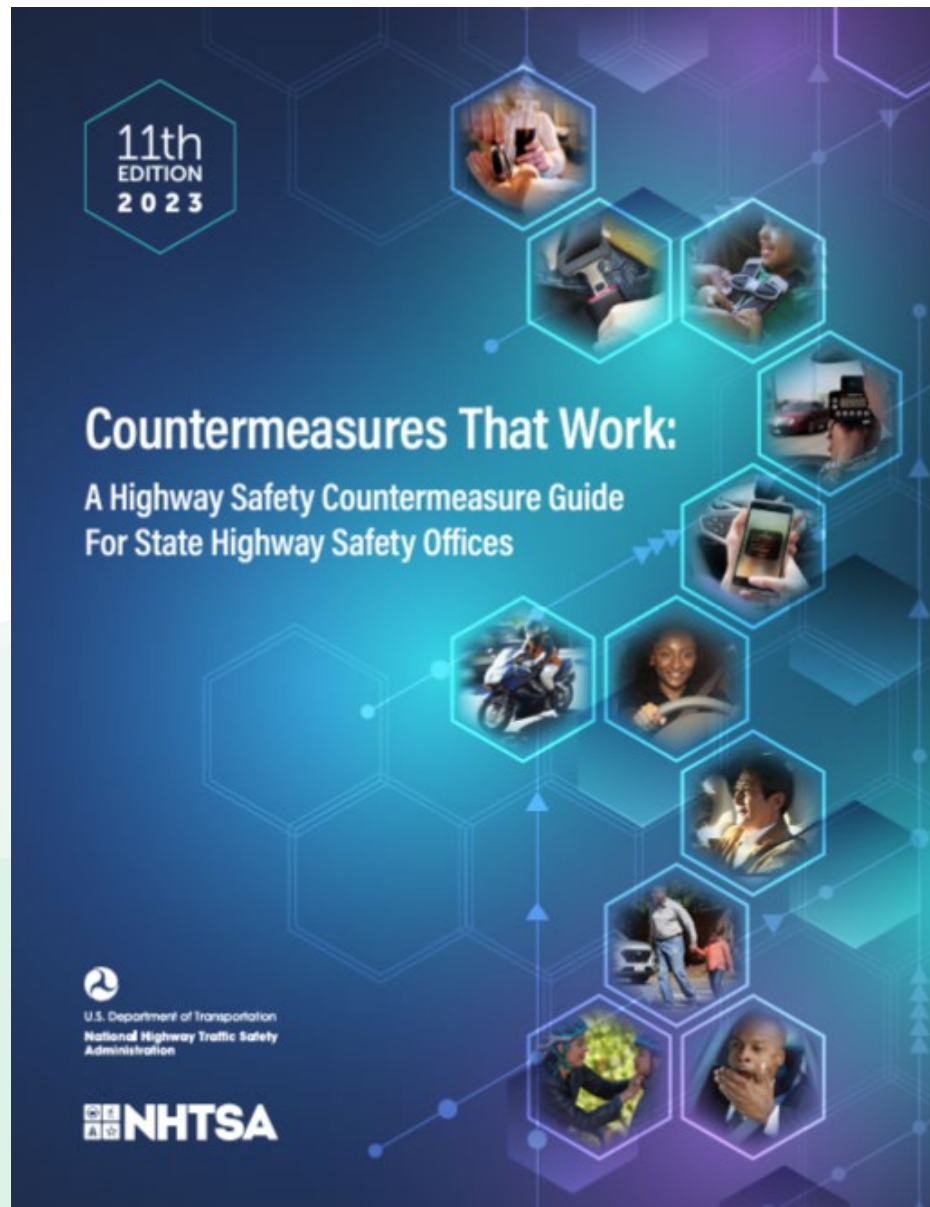
ELEMENTS OF BEST PRACTICE MODEL



- Data Driven – location, target violation
- Planned and coordinated by a local team / multijurisdictional
- Public is aware of the enforcement pre-during-post
- Enforcement is highly visible – clearly more than a typical day
- Local media are engaged by HVE planning team
- The HVE event / campaign is evaluated – qualitative and quantitative



WHY USE THIS STRATEGY?





WHY USE THIS STRATEGY?



Alcohol Impaired Driving Countermeasure				
Countermeasure	Effectiveness	Cost	Use	Time
High Visibility Saturation Patrols	★★★★	\$\$	High	Short

Seat Belt Countermeasures				
Countermeasure	Effectiveness	Cost	Use	Time
Short-Term, High Visibility Seat Belt Law Enforcement	★★★★★	\$\$\$	Medium	Medium

Speeding and Speed Management Countermeasures				
Countermeasure	Effectiveness	Cost	Use	Time
High-Visibility Enforcement	★★★★	\$\$\$	Medium	Medium

Distracted Driving Countermeasures				
Countermeasure	Effectiveness	Cost	Use	Time
High-Visibility Cell Phone Enforcement	★★★★	\$\$\$	Low	Medium

Motorcycle Safety Countermeasures				
Countermeasure	Effectiveness	Cost	Use	Time
Alcohol-Impaired Motorcyclists: Detection, Enforcement, and Sanctions	★★★	Varies	Unknown	Varies



Demonstrated to be effective by several evaluations with consistent results.



Demonstrated to be effective in certain situations.



Likely to be effective

WHY USE THIS STRATEGY?



Also...It's required!

- States must have participation in national events:
 - Click It or Ticket
 - 2 DUI national events

WHY USE THIS STRATEGY?



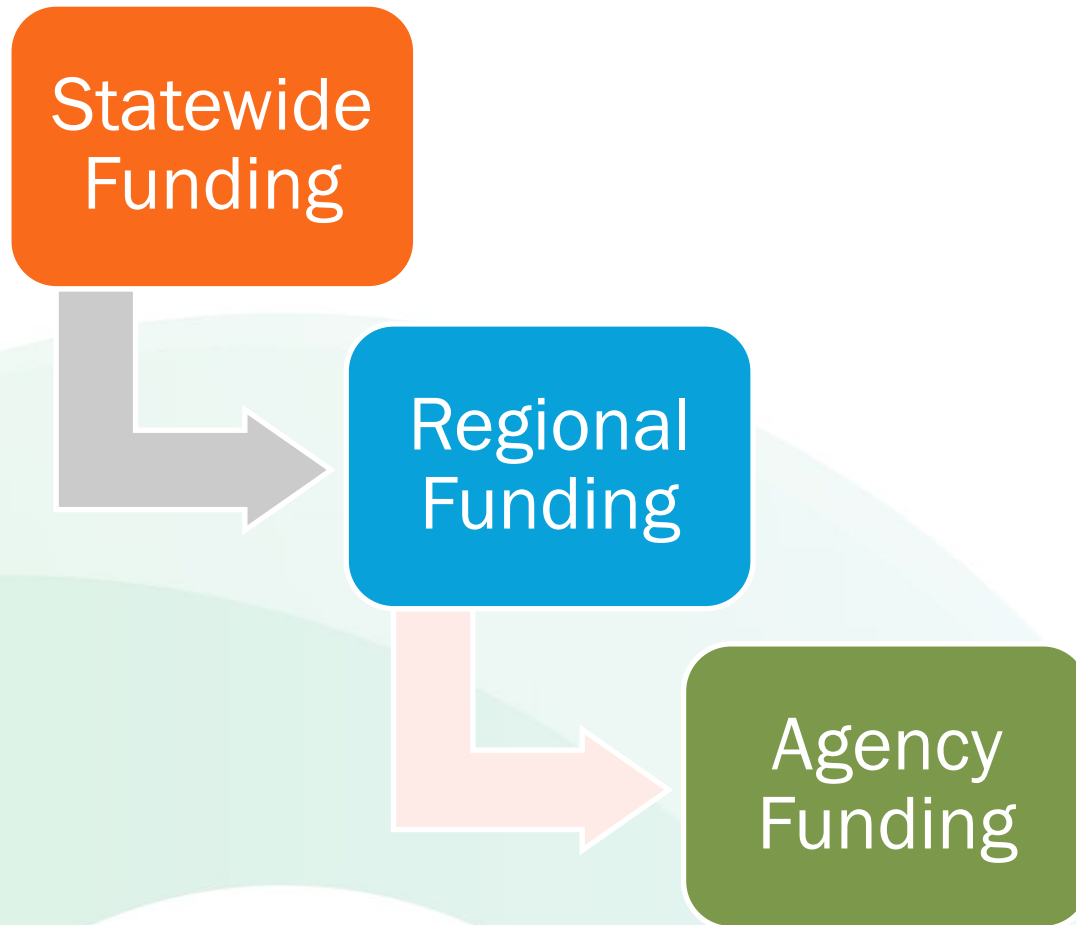
U DRIVE. U TEXT.





FUNDING APPROACH

WTSC sets the statewide funding amount for the statewide HVE program. Regions apply for funding through the regional Target Zero Manager. Task forces drive agency-specific funding decisions.





FFY2023 HVE SPENDING



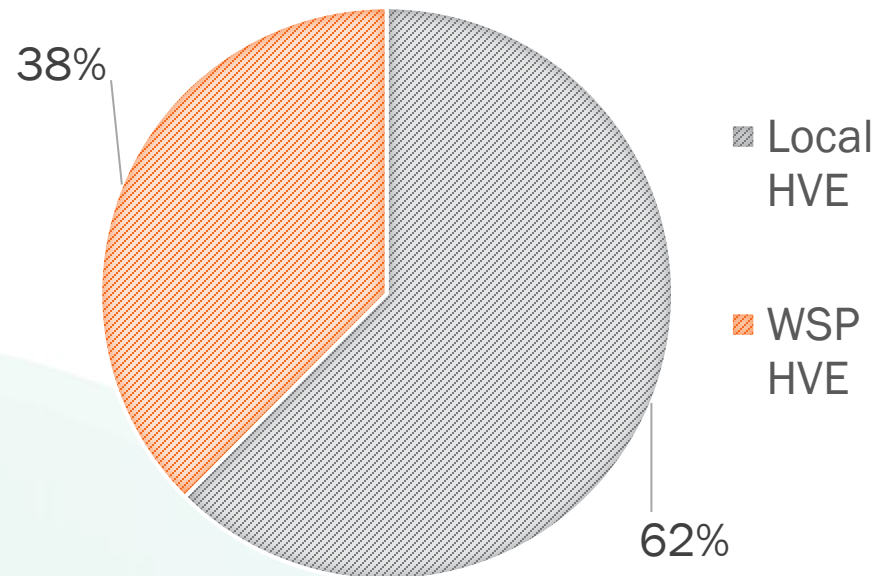
Total HVE Budget: \$2,415,000
spending: \$2,187,783

Total WSP Budget: \$915,000
spending: \$821,530

Total Local Budget: \$1,500,000
spending: \$1,366,253

Spend rate: 91%

FFY2023 HVE SPENDING

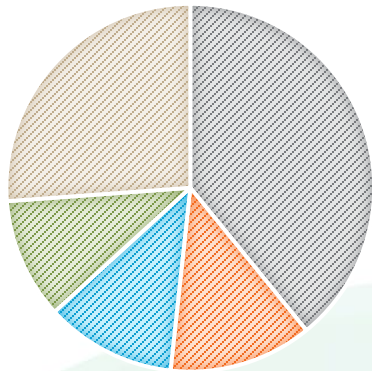


Note – historical spend rate is between 60% – 80%

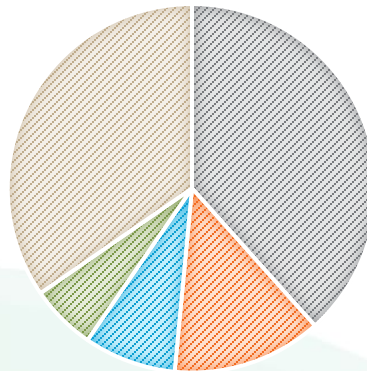
FFY 2023 HVE SPENDING BREAKDOWN



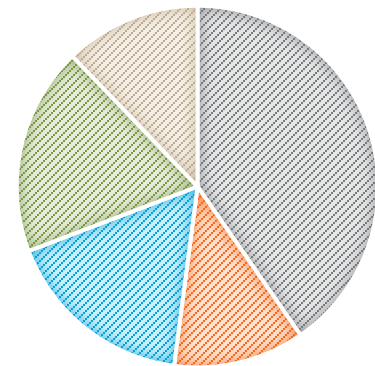
OVERALL SPENDING BREAKDOWN



LOCAL LEA HVE SPENDING



WSP HVE SPENDING



■ DUI ■ Distracted ■ Seat Belt ■ Motorcycle ■ Speed

PERFORMANCE HIGHLIGHTS



FFY2023 HVE Data	
Num of A/Ls	3,690
Hours	21,345
Contacts	40,081
Infractions	23,091
Warnings	22,541
DUI Arrests	815
Other Arrests	1,407
Speeding I/W	21,147
Elec I/W	4,555
SB I/W	2,482

Big 3 vs the rest		
	Pierce, King, SnoCo	Other
Num of A/Ls	1,622	2,068
Hours	9,479	11,866
Contacts	17,176	22,905
Infractions	11,814	11,277
Warnings	7,624	14,917
DUI Arrests	419	396
Other Arrests	603	804
Speeding I/W	8,312	12,835
Elec I/W	2,742	1,813



COMPARISON: 2023 - 2024

	FFY2023	FFY2024	Change
Num of A/Ls	2,245	2,520	+ 12%
Hours	13,631	15,039	+ 10%
Contacts	25,098	29,715	+ 18%
Infractions	13,737	18,450	+ 34%
Warnings	14,853	16,111	+ 8%
DUI Arrests	539	485	- 10%
Other Arrests	865	1,293	+ 49%
Speeding I/W	12,233	14,452	+ 18%
Elec I/W	3,295	3,624	+ 10%
Seat Belt I/W	1,800	1,499	- 17%

QUESTIONS?

JERRY NOVIELLO

WASHINGTON TRAFFIC SAFETY COMMISSION

(360) 725-9897

jnoviello@wtsc.wa.gov



**TARGET
ZERO**