

The Joint Operations Group (JOG) and Virtual Coordination Center (VCC) July 16, 2025

WSDOT Joint Operations Group Program Manager, Roger Wilbur

WSDOT Incident Management and Virtual Coordination Center Program Manager, Deanna Brewer

What is a Joint Operations Group?

- Joint Operations Groups (JOGs) are representatives from multiple agencies/disciplines.



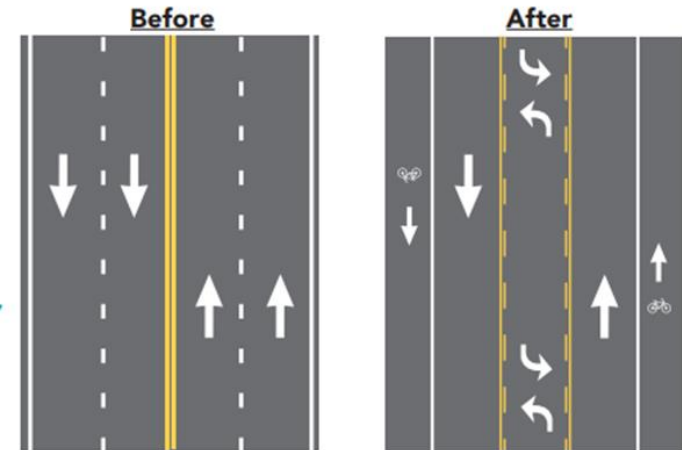
- **JOG Mission:** To encourage and facilitate multi-agency collaboration to reduce the impacts of large-scale incidents.
- Improves on information access, familiarity, and better communication between agencies.
- Enhances coordination for traffic incidents, emergencies, or any situation where interaction between agencies occurs.

Joint Operations Groups and Post Crash Care Benefits

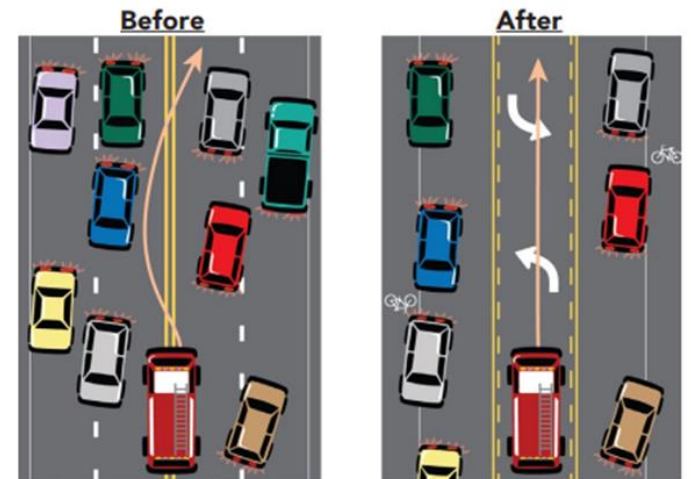
- Early collaborative discussions on what works and needs more work.
- Does the current system work to allow for responders to respond efficiently?
- Multi-agency and disciplinary discussions on transportation challenges.
- Platform to discuss solutions openly.
- Break down silos.



Leavenworth: US 2 and City Center



Two travel lanes are removed to reallocate space for a TWLWL and bicycle lanes.



A fire truck struggling to find a path.

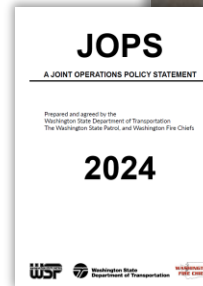
An easily navigable two-way left-turn lane.

JOGs...

- are a **state-wide initiative**, ideally **led by local/regional representatives** with insight and experience in the JOG area.
- **do not replace protocols, policies, procedures** or how an agency responds to, operates, prevents or prepares for events.
- **enhance what an agency already does**, not create an alternative to current practices.

Why?

- Incidents involve or impact multiple jurisdictions/agencies
- Information access helps agencies better coordinate their own and collective efforts
- Improves awareness and familiarity with points of contact, regional resources, limitations, and priorities of various disciplines
- Solutions identified before an incident
- The Joint Operations Policy Statement (JOPS) between WSP, WSDOT, and WFC supports multi-agency collaboration, the origin of JOGs.

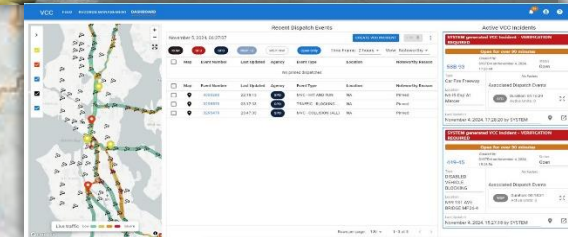


Joint Operations Groups (2015-2024)

JBLM JOG (2015)



Seattle Area JOG (2018)



I-5/Joint Base Lewis-McChord (JBLM) Corridor
Joint Operations Group (JOG)

2022 CHARTER UPDATE-
Referenced and Supported by Washington State's
Joint Operations Policy Statement (JOPS)

Updated 2/29/2022

Purpose and scope of this document recognizes the participating group members as all local
emergency response agency representatives responsible for active planning for significant state
highway and interstate incidents that require the closing or alteration of use of roadway operations for
normal travel use.

Seattle Area Congestion Management
Joint Operations Working Group
(SAJOG)



CHARTER

January 2018

JOG Expansion (June 2024 – present)

Website update

Charters

WSDOT Transportation Systems Management and Operations

Traffic incident management coordination

Traffic Incident Management (TIM) restores traffic flow as safely and quickly as possible following a roadway incident. Through planning and coordination, each of the collaborating agencies can focus on what they do best. State-level can focus on law enforcement. Fire can focus on traffic control and getting traffic going again.

Strategy description

WSDOT's Traffic Incident Management (TIM) program is a collaborative effort between WSDOT, local law enforcement, fire, and emergency services. The program focuses on reducing the time it takes to clear a roadway incident, which in turn reduces the risk of secondary incidents and improves traffic flow. The program is supported by a variety of resources, including training, equipment, and personnel. The program is also supported by a variety of partnerships, including with local law enforcement, fire, and emergency services. The program is a key component of WSDOT's overall transportation safety strategy.

South King County

Snohomish County

Tacoma

Northeast King County

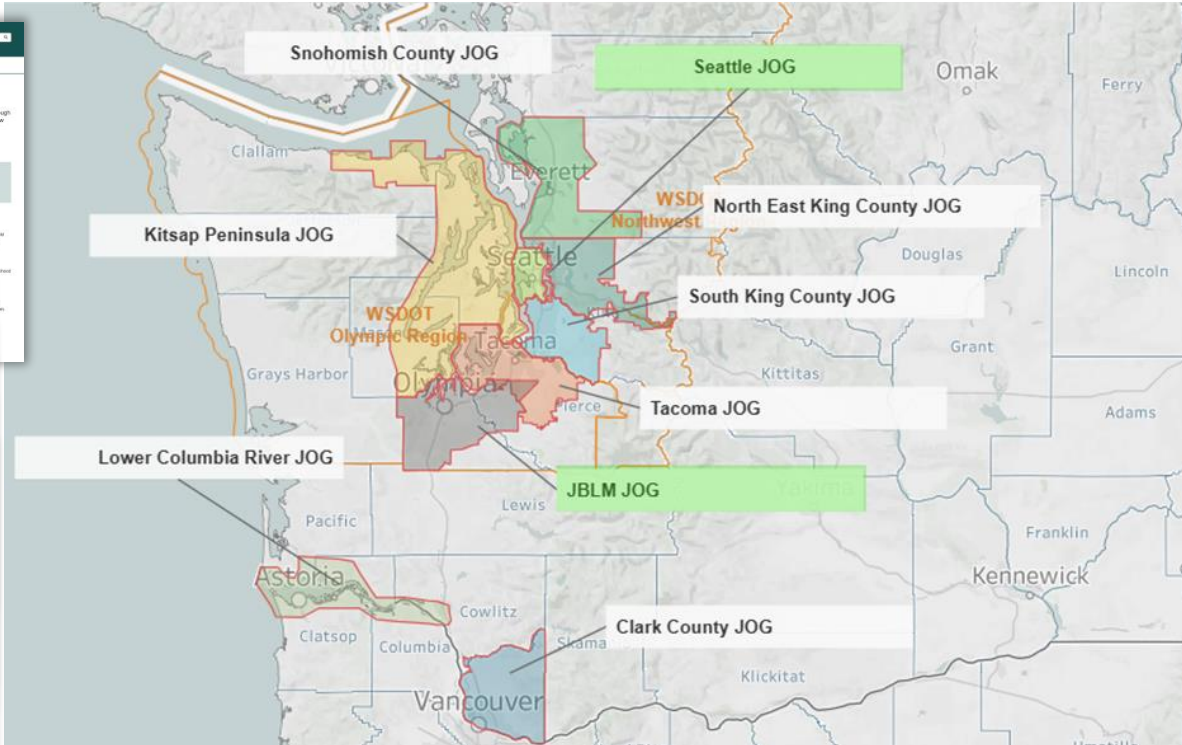
Joint Operations Group (NEJOG)

Kitsap Peninsula

Joint Operations Group (Kitsap Peninsula JOG)

2025 Charter

Referenced and supported by Washington State's Joint Operations Group (JOG) Statement of Intent (SOI).



Strategic Plan

Washington State Department of Transportation Joint Operations Group (JOG) Strategic Plan

WSDOT Values: Safety, Engagement, Innovation, Integrity, Leadership, Sustainability

JOG Mission: To ensure the safe, efficient, and integrated multimodal transportation system.

Background: The Washington State Department of Transportation (WSDOT) and the Washington Fire Chiefs Association (WFCOA) have a long history of collaboration. The JOG was established in 2015 to provide a central hub for information sharing, decision making, and resource coordination, ensuring that all participating organizations work together towards a common goal. By bringing together experts from various disciplines, the JOG enhances communication, provides interagency collaboration, and maximizes the effectiveness of joint operations. The structure and processes enable efficient coordination and a unified response to emergencies or other critical situations.

The JOG Program is meant to enhance collaboration among agencies and boost current efforts, it is not intended to replace, disrupt, or hinder an agency's responsibilities, current practices, or processes. Successful meeting implementation, forming new partnerships and improving communication, a JOG will better prepare agencies to work together and mitigate the impacts of an event by improving the joint incident response.

Program Expansion:

Expanded JOG program expansion started in June 2024 after funding for new positions and personnel was received. JOG are not a new idea in Washington but prior to 2024, only two existed: the Joint Base Lewis-McChord Joint Operations Group (JBLM JOG), started in 2015, and the Seattle Area Joint Operations Group (SAJOG), started in 2016. The JOG program is a collaborative effort between WSDOT and local law enforcement, fire, and emergency services. The program focuses on reducing the time it takes to clear a roadway incident, which in turn reduces the risk of secondary incidents and improves traffic flow. The program is supported by a variety of resources, including training, equipment, and personnel. The program is also supported by a variety of partnerships, including with local law enforcement, fire, and emergency services. The program is a key component of WSDOT's overall transportation safety strategy.

JOG meetings

Northeast King County JOG (NEJOG) Meeting Agenda

Location: TEAM6

Date: Tuesday, March 18, 2025

Time: 11:00am - 12:00pm

Introductions

11:00 am - 11:05 am - Welcome / JOG Mission / JOG Values / JOG Program Overview / JOG Meeting Agenda / JOG Meeting Objectives / JOG Meeting Outcomes / JOG Meeting Action Items / JOG Meeting Follow-up / JOG Meeting Evaluation / JOG Meeting Feedback / JOG Meeting Summary / JOG Meeting Conclusion

Old Business

11:05 am - 11:10 am - New agenda items

New Business

11:10 am - 11:15 am - WSDOT / WSDOT Mission / WSDOT Values / WSDOT Program Overview / WSDOT Meeting Agenda / WSDOT Meeting Objectives / WSDOT Meeting Outcomes / WSDOT Meeting Action Items / WSDOT Meeting Follow-up / WSDOT Meeting Evaluation / WSDOT Meeting Feedback / WSDOT Meeting Summary / WSDOT Meeting Conclusion

11:15 am - 11:20 am - Virtual Coordination Center update: Deanna Brewer, WSDOT

11:20 am - 11:25 am - Incident Detail: November 2024 wildfires: Bennett Ashbaugh, Kitsap Public Works Manager

11:25 am - 11:30 am - SR 18 closures and impacts: Bennett Ashbaugh, Kitsap Public Works Manager

Closing Comments and Action Items

11:30 am - 12:00 pm - Group input: Topics, speakers, presentations for next meeting?

Next meeting Tuesday, April 15, 2025 (2nd Tuesday of the month at 11 am)

Northeast King County JOG = 29 agencies

South King County JOG = 26 agencies

Tacoma/North Pierce County JOG = 34 agencies

Snohomish County JOG = 32 agencies

Kitsap Peninsula JOG = 40 agencies

Underway: Clark County JOG

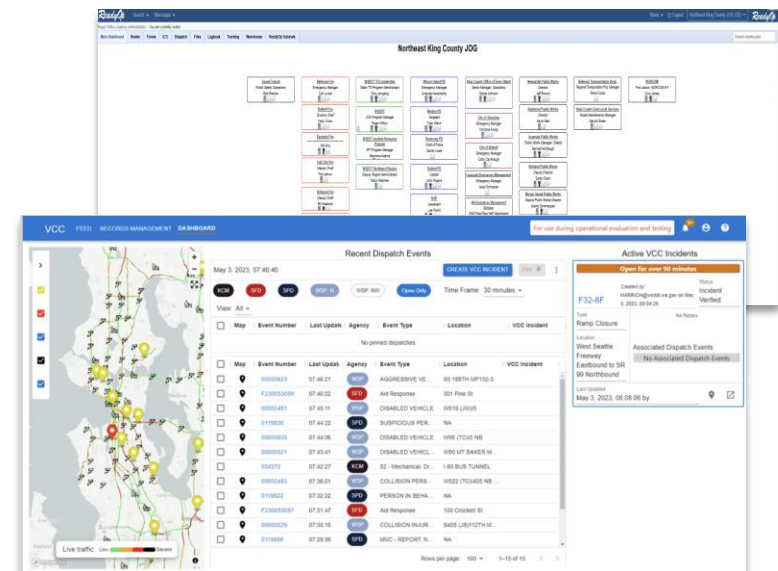
Underway: Lower Columbia River JOG

City/County/Tribal = Police, Fire, EMS, Emergency Management, Public Works, Road Services, Planners/Engineers, Transit Bus/Rail

State/Federal = WSP, Ecology, WSDOT Traffic Division, IRT, Emergency Management, Communications, Maintenance areas, Bridges, Traffic Management Centers, WA Emergency Management Division, Army, Air Force, Navy, Ports, Coast Guard

JOG participant commitment...

- attend monthly one-hour virtual JOG meetings
 - build relationships and communication between agencies
 - debrief incidents
 - familiarize personnel and resources
 - share about technologies and equipment
 - provide updates about construction or large events
 - discuss topics of interest
 - learn of training, grants, and other opportunities
- access more timely information through WSDOT-sponsored technologies free of charge. JOG members have access to the Virtual Coordination Center (VCC).



What is the Virtual Coordination Center?

The Virtual Coordination Center is a time-saving dashboard for transportation professionals.

- Shared
- Central
- Coordin
- Collabor

E59-43

Status: Closed

Closed At: May 12, 2025, 19:27:00

Closed By: Brandon Do - WSDOT

DETAILS

E59-43

Status: Closed

Closed At: May 12, 2025, 19:27:00

Closed By: Brandon Do - WSDOT

DETAILS

NOTES (9)

MOBILITY STRATEGIES (0)

PUBLIC INFORMATION HUB (6)

Scheduled Outreach

May 22, 2025, 07:25:18

Scheduled Time	Status	Audience	Agency	Recipient	From	Message	Files	History
	Complete	Interview Request	WSDOT	Local Media	aishad@wsdot.w...	Seattle Times, KIRO news radio, KIRO...	VIEW	

Approved Talking Points

Talking Point Description	Agency	Updated By	Last Updated Time	Files	History
Transit alert issued to subscribers 1240pm (link included)	KCM	Jeff Switzer	14:23:04	VIEW	
Tweet thread (with link)	WSDOT	Aisha Dayal	16:21:29	VIEW	
Transit alert Route 111 issued 252pm (link included)	KCM	Jeff Switzer	14:58:55	VIEW	
All Metro Eastbound I-90 bus routes rerouted to SR 520. Metro westbound I-90 bus routes are normal route still.	KCM	Jeff Switzer	15:04:03	VIEW	
Travel advisory (with link)	WSDOT	Aisha Dayal	13:39:07	VIEW	

Contributing

Location

Lane Impact

Number of Lanes Fully Blocked

Roadway Description

Tunnel

VCC Incident Type

Car Fire Fire

VCC Incident

Incident Color

Est. Clearance Time

4 to 6 hours

Associated

SFD

El

Elapsed Duration

06:59:10

EB I-90 is now fully open.

SDOT actions:Exec Text: 12:39, 13:33AlertSeattle Text: 15:09

WSDOT maintenance starting r

WSDOT Bridge preservation of

SPD initially set up ramp closure Parking Enforcement relieved t what he learned from WSP and update T-Mobile in the 7th innir

SDOT is aware of incident. We

WSDOT maintenance on scene

WSDOT bridge inspector enrou

Due to 50% foam capacity, botl

VS

VCC System

To Wilb

Retention Policy

Delet

If there are problem

WARNING: This email

A new VCC COLLIS

Virtual Coordination Center (VCC) Major Event/Construction Layer

- A list view of events is displayed and a VCC incident can be created for coordinated response and sharing of information.
- A list view of events is displayed and a VCC incident can be created for coordinated response and sharing of information.
- A list view of events is displayed and a VCC incident can be created for coordinated response and sharing of information.

Event Details

VCC

Major Construction & Events

CREATE EVENT

FILTERS

DENSITY

Name	Event Type	Status	State Route	Direction	Mileposts	Common Name	Contract No.	Start Date	End Date
No Kings Protest March (Start)	Special Event	Active	Pine St	Both Directions	Broadway -			6/14/25	6/14/25
UW Commencement	Special Event	Active	Montlake ...	Northbound	E Hamlin -			6/14/25	6/14/25
FIFA Club WC Match Botafogo V...	Special Event	Active			-			6/15/25	6/15/25
FIFA Club WC Match -M10: CA Ri...	Special Event	Active			-			6/17/25	6/17/25
No Kings Protest March (End)	Special Event	Active			-			6/14/25	6/14/25
FIFA Club WC Match - M19: Seatt...	Special Event	Active			-			6/19/25	6/19/25
FIFA Club WC Match - Seattle So...	Special Event	Active			-			6/23/25	6/23/25
FIFA Club WC Match - EC Interna...	Special Event	Active			-			6/25/25	6/25/25
PrideFest 2025	Special Event	Active			-			6/29/25	6/29/25

Rows per page: 50

1-9 of 9

Description of Work 0/100

Description of Traffic Control Required

Comments 0/100

ADD TRAFFIC IMPACT

Mapbox

Live traffic Low Severe

EDIT

CLOSE

DATE EVENT

Incident Response and VCC

The Washington State Department of Transportation's (WSDOT) Incident Response program (IRT) plays a central role in supporting the post-crash care element of the Safe System approach, which is the framework WSDOT embraces to reduce the frequency and severity of crashes across the transportation network.

- IRT works in close coordination with emergency responders to quickly clear crashes and other incidents. IRTs role is to help redirect traffic, assist stranded motorists, and remove debris with the goal to restore safe roadway conditions as quickly as possible.
- Two-thirds of secondary crashes are rear-end crashes and in close proximity to the original crash
- Risk of secondary crashes increases by 2.8%
- The VCC plays a vital role in coordinated responses to incidents



Statewide JOG Locations

JBLM JOG

SAJOG

NEJOG

SouthJOG

Snohomish
County
JOG

Tacoma
JOG

Kitsap
Peninsula
JOG

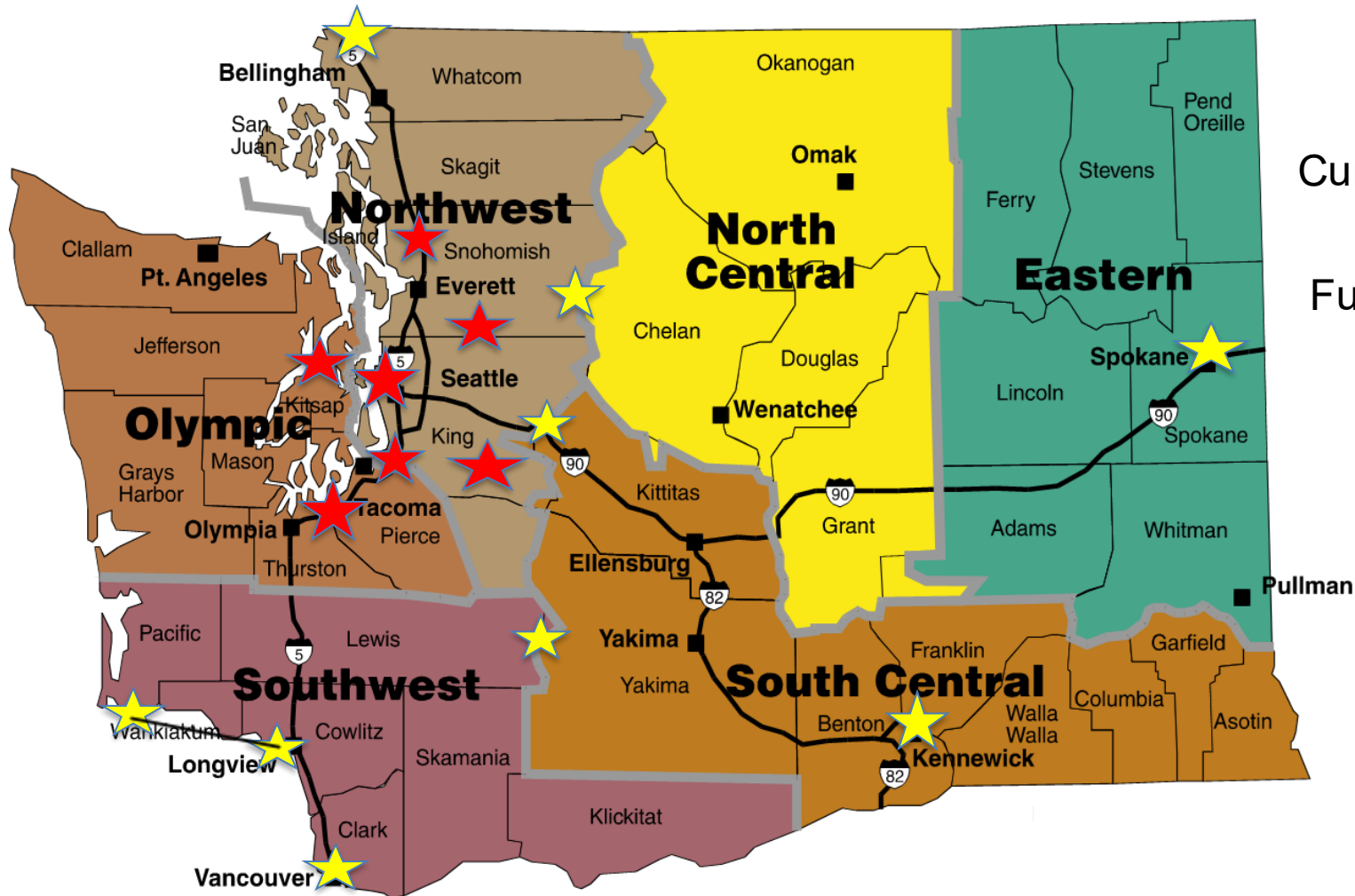
Clark
County
JOG

Lower
Columbia
River JOG

Spokane
JOG

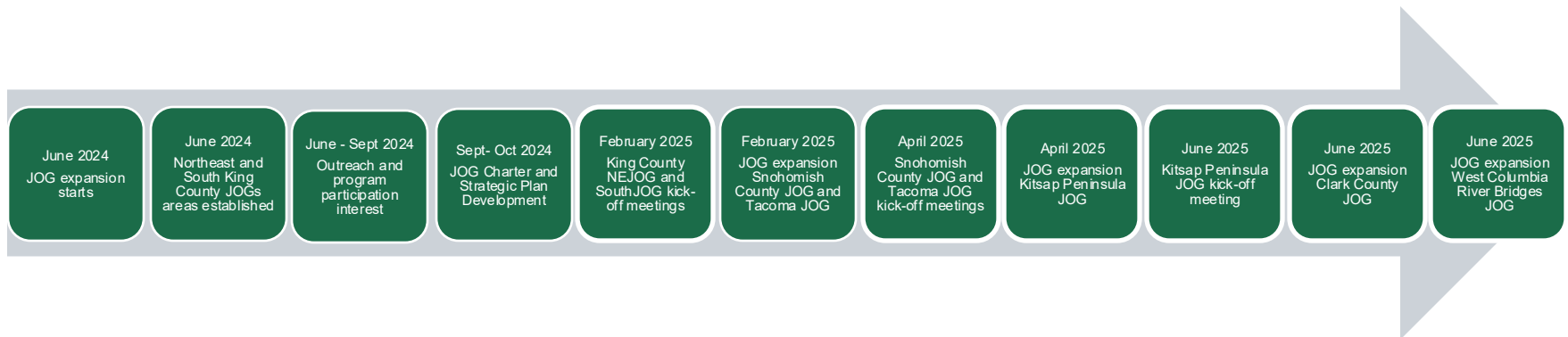
Tri-Cities
JOG

Border
Crossing
JOG



What's next?

- JOG expansion continues....
 - Identification of other locations
 - Outreach to local/regional agencies for participation interest
 - JOG participants = Virtual Coordination Center access
 - VCC expansion to all JOG locations
 - VCC training for participants
 - Live camera feeds
 - Major construction layer (added June 2025)
 - Major event layer (added June 2025)
 - Solicit user feedback for optimal performance



Questions?

WSDOT Incident Management and Virtual Coordination Center Program Manager

Deanna Brewer

Deanna.Brewer@wsdot.wa.gov

WSDOT Joint Operations Group Program

Roger Wilbur

Roger.Wilbur@wsdot.wa.gov

More information about the Joint Operations Group Program, Traffic Incident Management, or Transportation Systems Management and Operations (TSMO) can be found using this QR code or at tsmowa.org.

