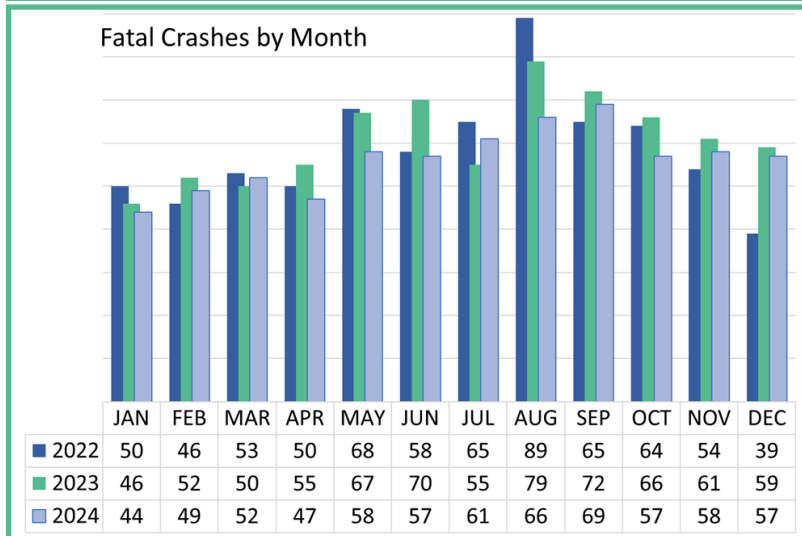




State of the State: Washington Traffic Fatalities

Traffic fatalities on Washington roads have increased rapidly since 2020, reaching the highest numbers since 1990 and peaking at 809 fatalities in 2023 before finally declining 10 percent in 2024. Active transportation and Motorcyclist fatalities remain at historical highs. While total fatalities decreased in 2024, fatal crashes involving drivers ages 16-17, older drivers ages 70 and above, and distracted drivers increased in 2024.

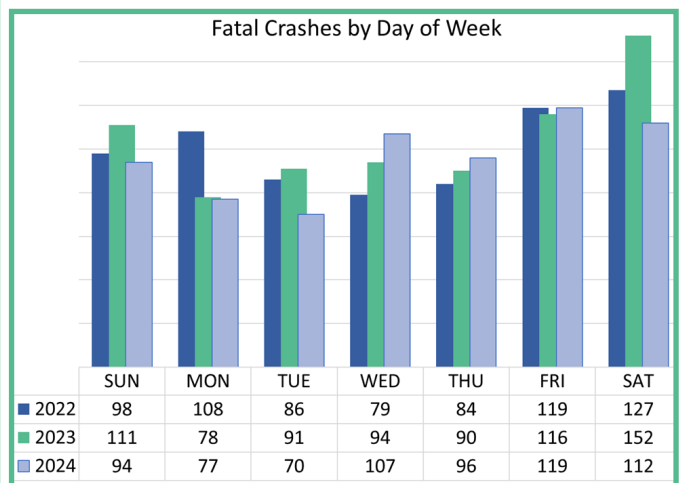
Traffic Fatalities in Washington State					
	2022	2023	% Change in 2023	2024	% Change in 2024
All Fatalities	743	809	8.9%	731	-9.6%
Impaired Driver Involved	387	410	5.9%	348	-15.1%
Speeding Involved	254	270	6.3%	247	-8.5%
Distracted Driver Involved	99	136	37.4%	138	1.5%
Unrestrained Occupants	155	172	11.0%	141	-18.0%
Motorcyclists	133	142	6.8%	113	-20.4%
Active Transportation Users	145	177	22.1%	168	-5.1%
Driver Ages 16-17 Involved	34	26	-23.5%	27	3.8%
Driver Ages 18-20 Involved	51	92	80.4%	77	-16.3%
Driver Ages 21-25 Involved	100	129	29.0%	90	-30.2%
Driver Ages 70+ Involved	94	90	-4.3%	105	16.7%
Heavy Truck Involved	90	82	-8.9%	79	-3.7%
Traffic Serious Injuries	3,106	3,411	9.8%	3,290	-3.5%



I care, because 2,283 people have died and 9,807 were seriously injured in traffic crashes in Washington since 2022. In 2024 fatal crashes decreased most on county roads (-13.2 percent) and on U.S. Highways (-10.6 percent).

Fatal Crashes in Washington State					
	2022	2023	% Change in 2023	2024	% Change in 2024
Interstate	84	77	-8.3%	78	1.3%
US highway	53	66	24.5%	59	-10.6%
State route	203	201	-1.0%	192	-4.5%
County road	194	182	-6.2%	158	-13.2%
City street	157	189	20.4%	172	-9.0%
Other/Unk	10	17	N/A	15	N/A
Total Crashes	743	809	8.9%	730	-9.8%

Fatal crashes are typically highest in the summer months and on weekends. However in 2023 the rise in fatal crashes was primarily concentrated in the months September—December and these months continue to rival summer months in 2024. In 2023, increases in fatal crashes occurred on Wednesdays and Thursdays, which have been consistently increasing since 2022. The highest frequency of fatal crashes in 2024 occurred on Fridays and Saturdays.



Data Notes:

Washington Coded Fatal Crash (CFC) Files, Washington Traffic Safety Commission

*2024 numbers are preliminary at the time of this publication (May 2025)

For more information, please contact (360) 725-9860. <https://wtsc.wa.gov/research-data/>



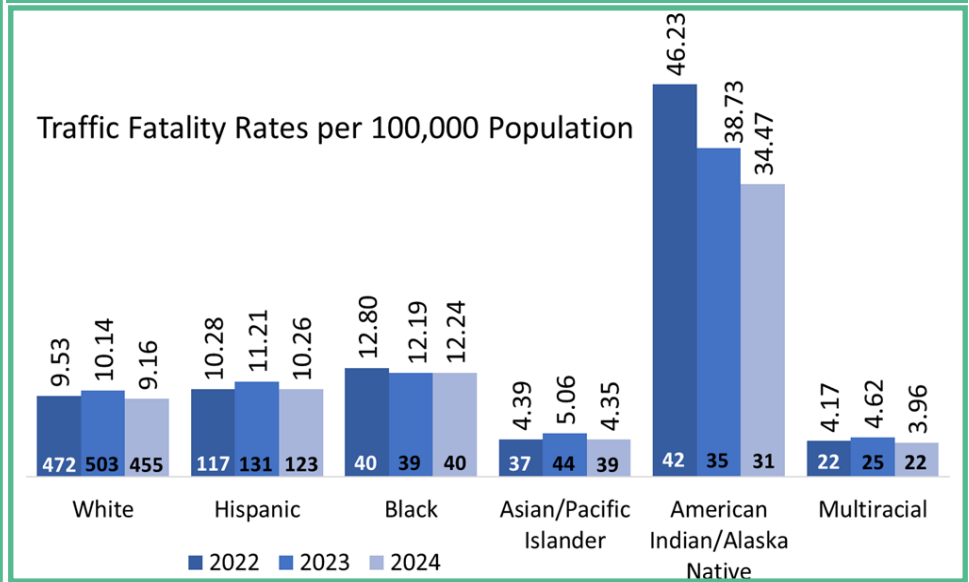
State of the State: Washington Traffic Fatalities

Rates of traffic fatalities and serious injuries in Washington have increased across all population exposure measures through 2023 and finally subsided with the 10 percent decrease in fatalities in 2024. Rates by race/ethnicity are only available for traffic fatalities (not all persons in fatal crashes) as that demographic information is collected on death certificates. Like many other health outcomes, traffic fatality rates vary greatly by race/ethnicity.

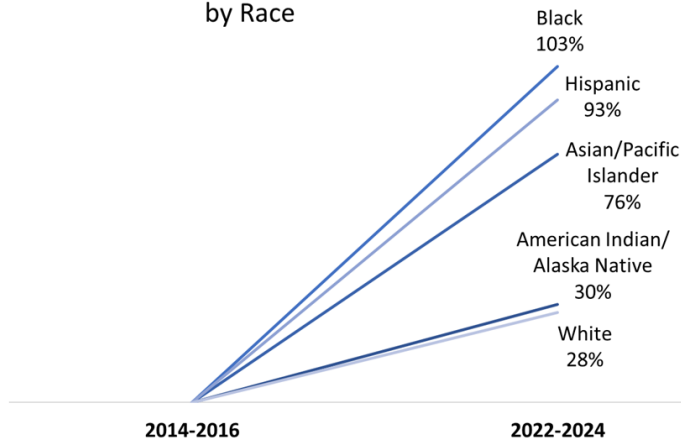
Traffic Fatality and Serious Injury Rates in Washington State			
	2022	2023	*2024
Vehicle Miles Traveled (VMT) (in 1,000s)	58,530	59,804	60,654
Fatality Rate per 100 Million VMT	1.269	1.353	1.204
Serious Injury Rate per 100 Million VMT	5.307	5.704	5.424
Population	7,864,400	7,951,150	8,035,700
Fatality Rate per 100,000 Population	9.4	10.2	9.1
Serious Injury Rate per 100,000 population	39.5	42.9	40.9
Licensed Drivers	5,977,980	6,033,102	6,080,192
Fatality Rate per 100,000 Lic. Drivers	12.4	13.4	12.0
Serious Injury Rate per 100,000 Lic. Drivers	52.0	56.5	54.1
Registered Vehicles	8,049,484	8,014,871	8,012,765
Fatality Rate per 100,000 Reg. Vehicles	9.2	10.1	9.1
Serious Injury Rate per 100,000 Reg. Vehicles	38.6	42.6	41.1

Did you know?

- ⇒ Native Americans/Alaska Natives persistently have the highest traffic fatality rate per 100,000 population.
- ⇒ Whites experience the highest number of fatalities (over half of all fatalities), followed by Hispanics (17 percent of fatalities).
- ⇒ The percent change in the number of traffic fatalities over the previous ten years has increased most rapidly among Black and Hispanic persons and is higher for all groups compared to Whites.



Percent Change in Traffic Fatalities by Race



Traffic fatalities have increased for all race/ethnicity groups. However, the rate at which traffic fatalities are increasing is disparate among these groups. White fatalities occur in the highest numbers; Black, Hispanic, and Asian/Pacific Islander fatalities are increasing in numbers the fastest; and American Indian/Alaska Natives continue to have the highest traffic fatality rate per 100,000 population.

Data Notes:

VMT (WSDOT Travel Data), Population (OFM Population Estimates), Licensed Drivers and Registered Vehicles (DOL Statistics at a Glance 2024) *2024 numbers are preliminary at the time of this publication (May 2025)

For more information, please contact (360) 725-9860.

<https://wtsc.wa.gov/research-data/>

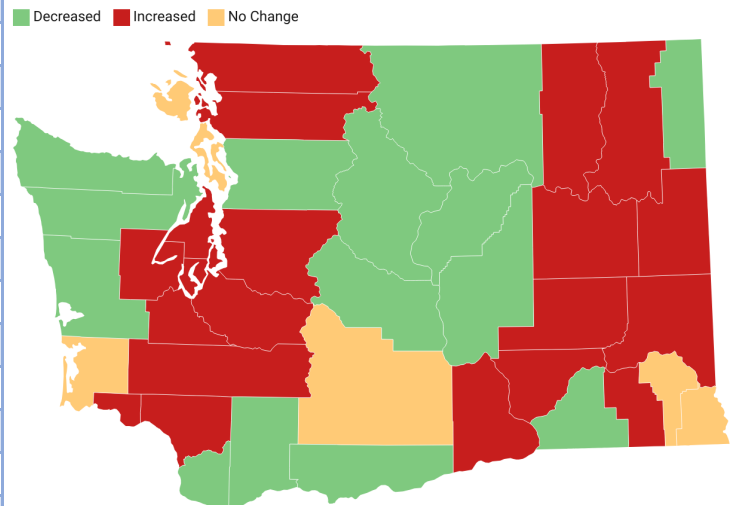


Fatal Crashes in Washington State by County

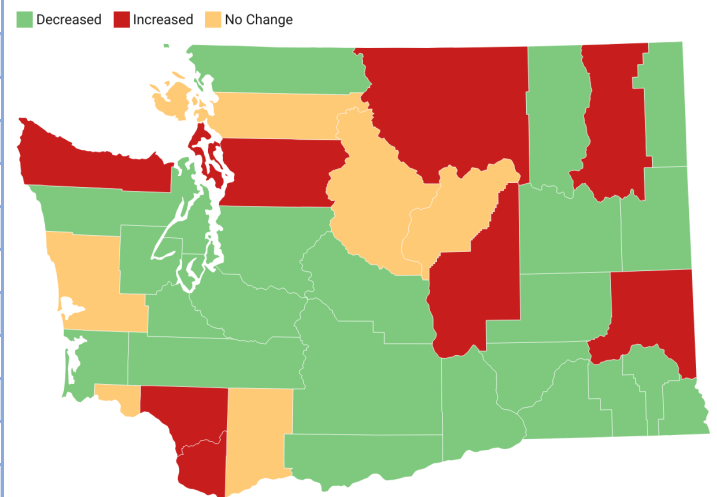
	2022	2023	% Change in 2023		2024	% Change in 2024	
Adams	6	8	33.3%	↑	4	-50.0%	↓
Asotin	3	3	0.0%	→	1	-66.7%	↓
Benton	19	28	47.4%	↑	13	-53.6%	↓
Chelan	9	7	-22.2%	↓	7	0.0%	→
Clallam	6	4	-33.3%	↓	5	25.0%	↑
Clark	38	34	-10.5%	↓	42	23.5%	↑
Columbia	0	1	Increase	↑	0	-100.0%	↓
Cowlitz	10	14	40.0%	↑	20	42.9%	↑
Douglas	9	4	-55.6%	↓	4	0.0%	→
Ferry	2	4	100.0%	↑	1	-75.0%	↓
Franklin	5	11	120.0%	↑	9	-18.2%	↓
Garfield	1	1	0.0%	→	0	-100.0%	↓
Grant	28	21	-25.0%	↓	23	9.5%	↑
Grays Harbor	15	9	-40.0%	↓	9	0.0%	→
Island	5	5	0.0%	→	13	160.0%	↑
Jefferson	7	6	-14.3%	↓	4	-33.3%	↓
King	146	151	3.4%	↑	140	-7.3%	↓
Kitsap	20	22	10.0%	↑	16	-27.3%	↓
Kittitas	13	11	-15.4%	↓	8	-27.3%	↓
Klickitat	8	4	-50.0%	↓	1	-75.0%	↓
Lewis	9	16	77.8%	↑	8	-50.0%	↓
Lincoln	1	7	600.0%	↑	5	-28.6%	↓
Mason	18	20	11.1%	↑	14	-30.0%	↓
Okanogan	10	5	-50.0%	↓	9	80.0%	↑
Pacific	5	5	0.0%	→	2	-60.0%	↓
Pend Oreille	5	3	-40.0%	↓	1	-66.7%	↓
Pierce	86	95	10.5%	↑	94	-1.1%	↓
San Juan	1	1	0.0%	→	1	0.0%	→
Skagit	16	17	6.3%	↑	17	0.0%	→
Skamania	6	2	-66.7%	↓	2	0.0%	→
Snohomish	57	41	-28.1%	↓	59	43.9%	↑
Spokane	40	57	42.5%	↑	52	-8.8%	↓
Stevens	7	8	14.3%	↑	9	12.5%	↑
Thurston	18	32	77.8%	↑	26	-18.8%	↓
Wahkiakum	0	1	Increase	↑	1	0.0%	→
Walla Walla	9	7	-22.2%	↓	6	-14.3%	↓
Whatcom	16	19	18.8%	↑	12	-36.8%	↓
Whitman	2	4	100.0%	↑	5	25.0%	↑
Yakima	45	44	-2.2%	↓	32	-27.3%	↓

Fatal Crashes by County

Fatal Crashes by County in 2023



Fatal Crashes by County in 2024



Did you know?

- ⇒ Despite the statewide decrease in traffic fatalities in 2024, nine counties (out of 39) experienced an increase in fatalities.
- ⇒ Some counties experienced significant decreases in fatalities in 2024 compared to 2023, most notably Benton, Lewis, Thurston, and Yakima counties.
- ⇒ More than half of fatal crashes in 2024 occurred in just five counties; King, Pierce, Snohomish, Spokane, and Yakima.

Data Notes:

“Increase” in the table means any increase from a ZERO baseline. For more information visit the WTSC dashboards page— <https://wtsc.wa.gov/research-data/dashboards/>



State of the State: Washington Traffic Fatalities

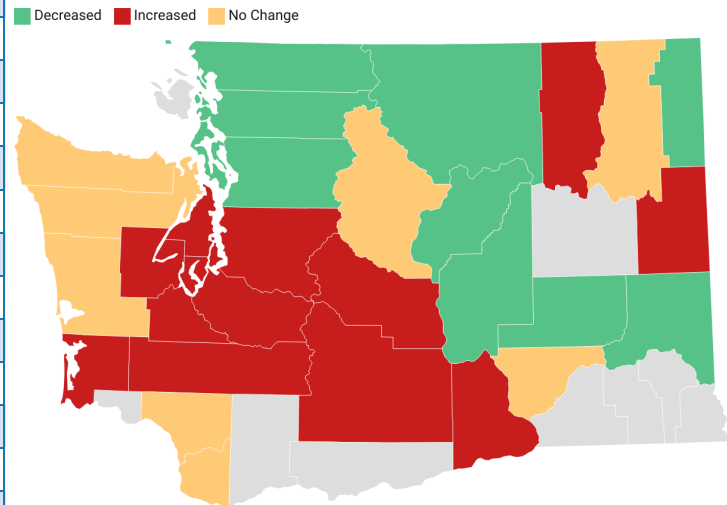
Walker/Roller Fatalities in Washington State by County

	2022	2023	% Change in 2023		2024	% Change in 2024	
King	50	60	20.0%		52	-13.3%	↓
Pierce	16	21	31.3%	↑	30	42.9%	↑
Clark	7	7	0.0%	↑	17	142.9%	↑
Spokane	7	27	285.7%	↓	16	-40.7%	↓
Snohomish	17	11	-35.3%	↑	13	18.2%	↑
Yakima	3	9	200.0%	→	7	-22.2%	↓
Thurston	5	6	20.0%	↑	6	0.0%	→
Whatcom	8	3	-62.5%	↓	4	33.3%	↑
Cowlitz	0	0	0.0%	↑	3	Increase	↑
Franklin	1	1	0.0%	↓	3	200.0%	↑
Grays Harbor	2	2	0.0%	↑	3	50.0%	↑
Island	2	1	-50.0%	↑	3	200.0%	↑
Skagit	3	2	-33.3%	→	3	50.0%	↑
Grant	4	3	-25.0%	→	2	-33.3%	↓
Kitsap	2	6	200.0%	→	2	-66.7%	↓
Benton	2	4	100.0%	↑	1	-75.0%	↓
Chelan	1	1	0.0%	↓	1	0.0%	→
Kittitas	1	2	100.0%	↓	1	-50.0%	↓
Lewis	2	2	0.0%	↓	1	-50.0%	↓
Adams	2	1	-50.0%	→	0	-100.0%	↓
Clallam	1	1	0.0%	→	0	-100.0%	↓
Douglas	2	0	-100.0%	↑	0	0.0%	→
Ferry	0	1	Increase	→	0	-100.0%	↓
Mason	2	4	100.0%	↓	0	-100.0%	↓
Okanogan	2	0	-100.0%	→	0	0.0%	→
Pacific	0	1	Increase	↓	0	-100.0%	↓
Pend Oreille	1	0	-100.0%	→	0	0.0%	→
Stevens	1	1	0.0%	↑	0	-100.0%	↓
Whitman	1	0	-100.0%	↑	0	0.0%	→

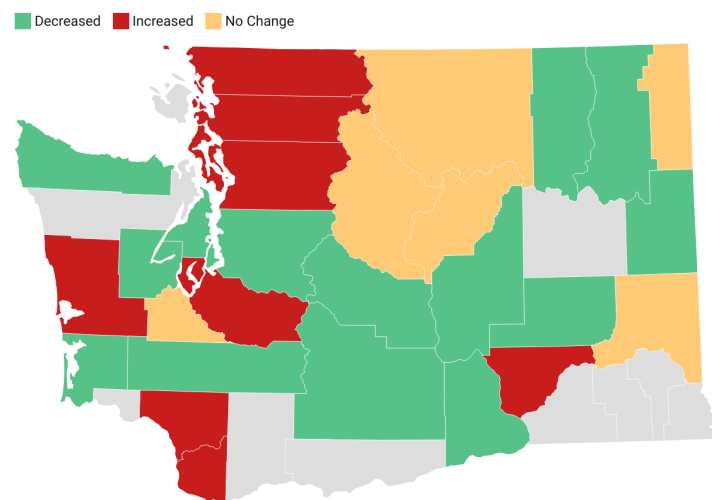
Did you know?

- ⇒ Half of walker/roller fatalities occurred in just two counties; King and Pierce.
- ⇒ Ten counties had zero walker/roller fatalities in 2024. Ten more counties have had zero walker/roller fatalities in the past three years. That is 20 counties in 2024 with zero walker/roller fatalities, the highest number of counties in the previous three years.
- ⇒ Walker/roller fatalities in 2024 increased most significantly in Pierce and Clark counties.

Walker/Roller Fatalities by County in 2023



Walker/Roller Fatalities by County in 2024



Counties with zero walker/roller fatalities 2022-2024:

- | | | | |
|----------|-----------|-----------|-------------|
| Asotin | Jefferson | San Juan | Walla Walla |
| Columbia | Klickitat | Skamania | |
| Garfield | Lincoln | Wahkiakum | |

Data Notes:

“Increase” in the table means any increase from a ZERO baseline. For more information visit the WTSC dashboards page— <https://wtsc.wa.gov/research-data/dashboards/>