



# TRAFFIC SAFETY COMMISSION

## Washington Traffic Survey 2025

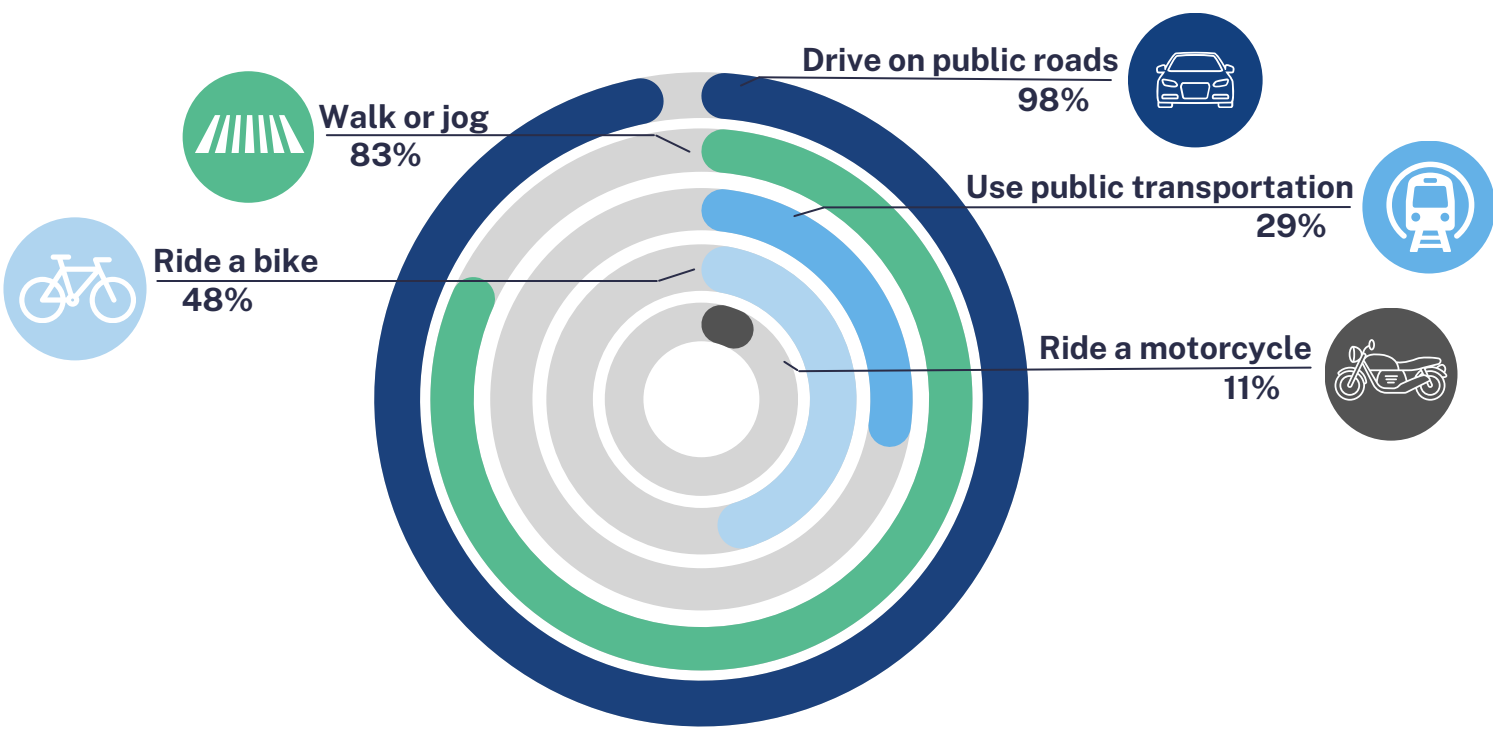
The Washington (WA) Traffic Safety Commission (WTSC) has conducted a statewide survey of adults aged 18 and over. This research aims to inform statewide planning and evaluation of traffic safety programs.

This infographic provides insight into this year's findings, covering road usage patterns, perceived roadway risks, community beliefs, and pedestrian and cyclist experiences on public roads.

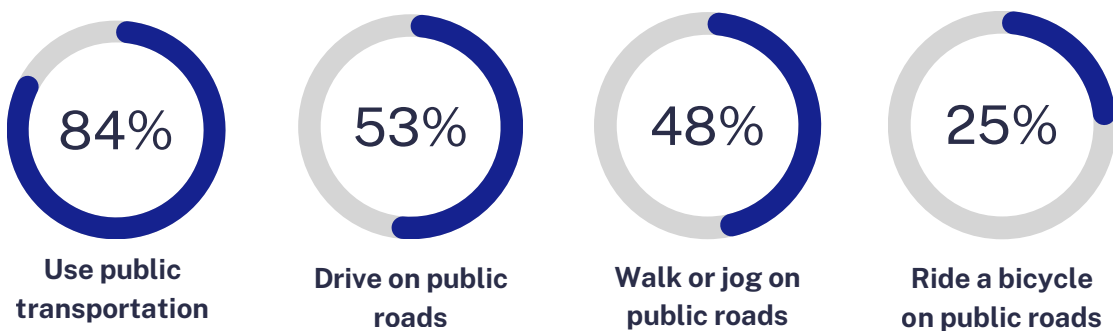
### REGION 17: Asotin, Columbia, Garfield & Walla Walla Counties

## ROAD USE

### How do people use public roads?



### Adults who feel it is safe to...



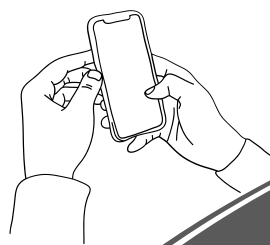
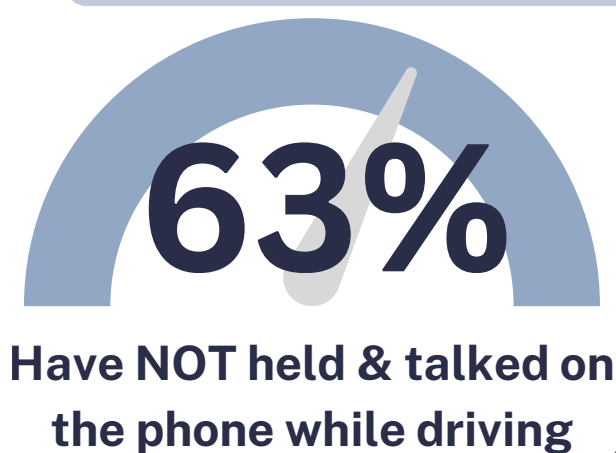
### Belief in Zero Tolerance for Road Harm



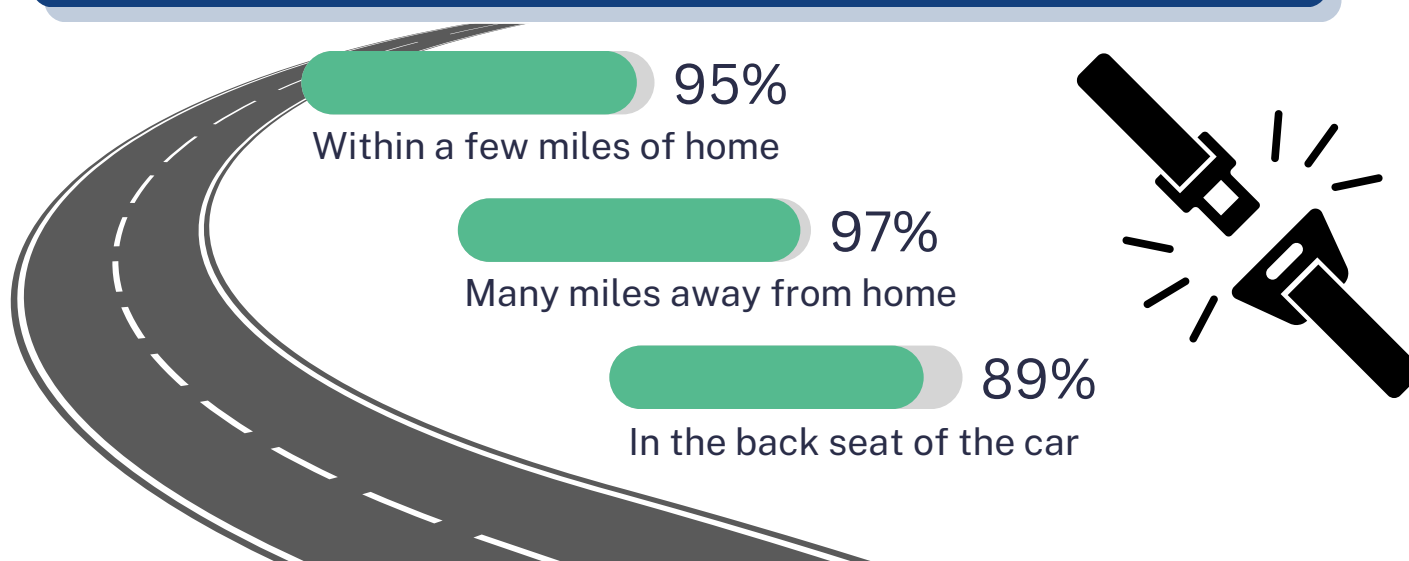
### Public Interventions on Unsafe Driving Practices



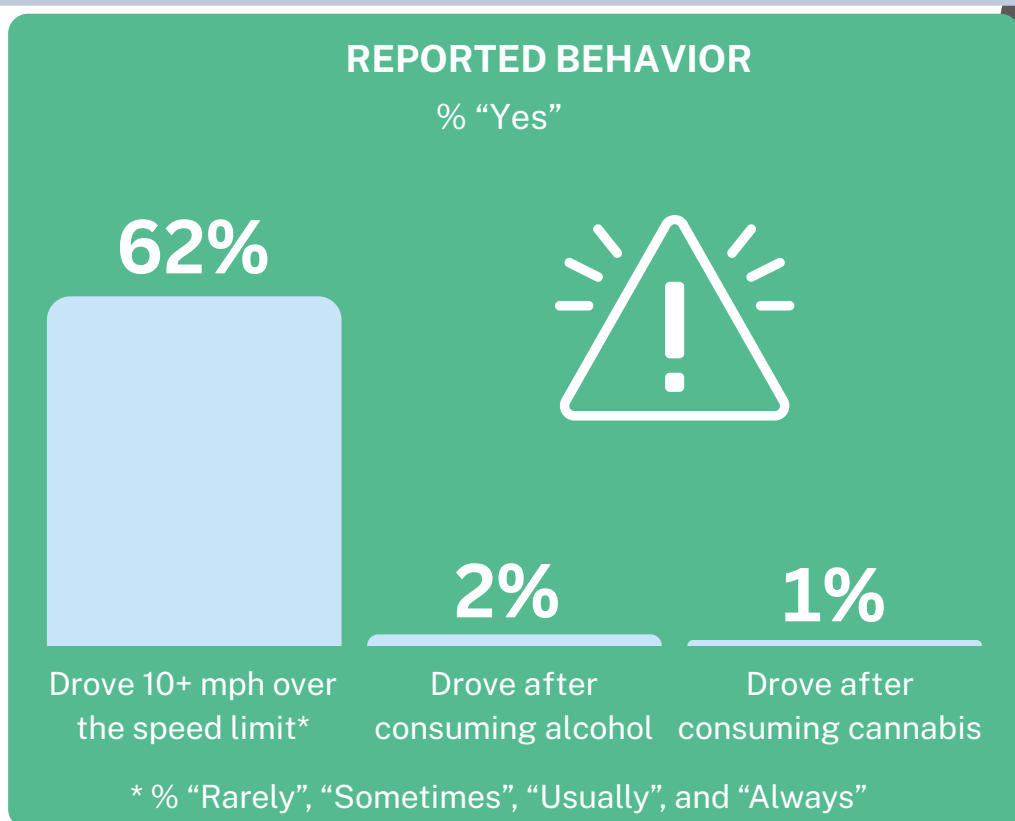
### Phone Use While Driving



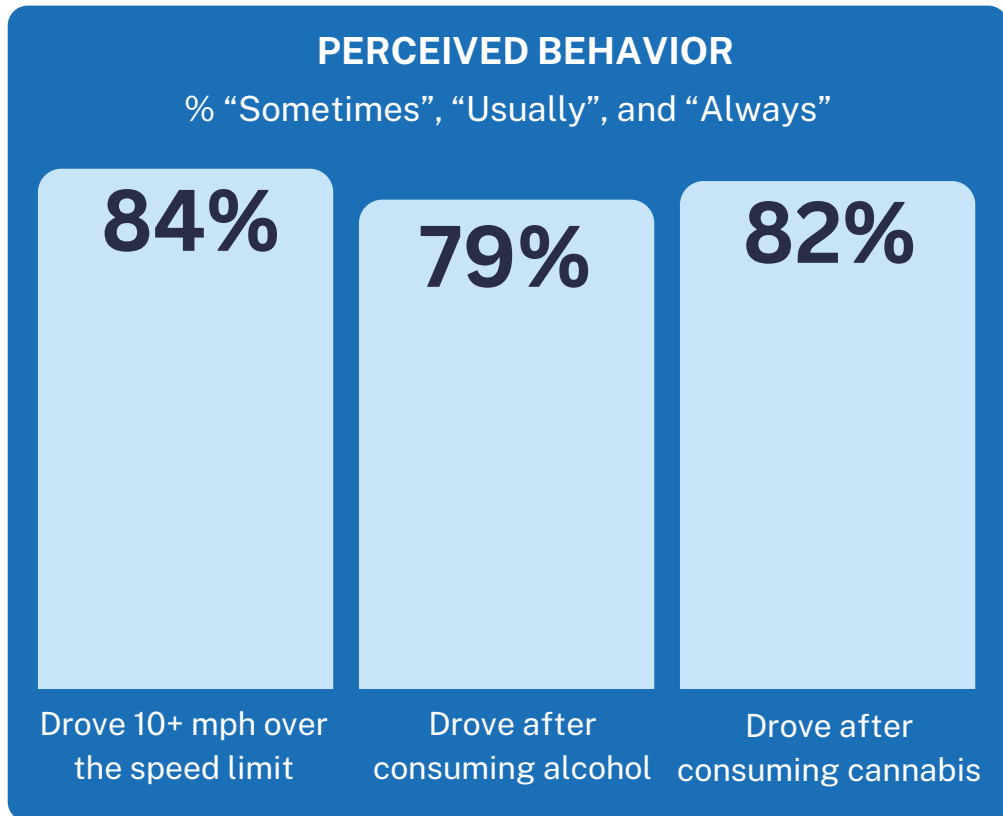
## Where and when adults consistently buckle up



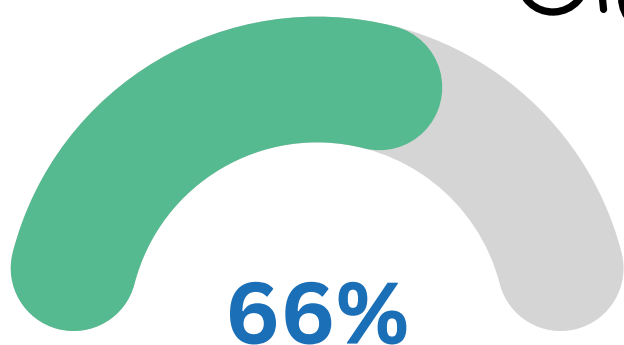
## Self-Reported High-Risk Driving Behavior



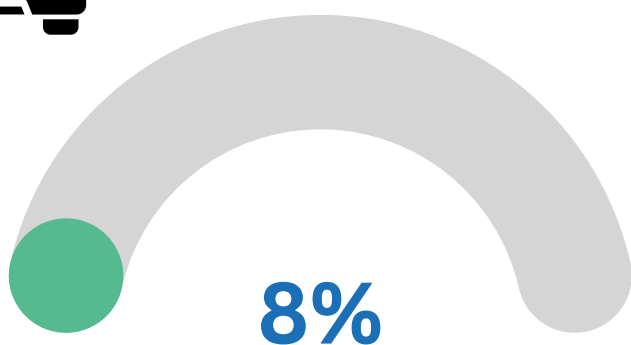
## Perceived Frequency of High-Risk Driving Behavior in Community



## Pedestrian and Cyclist Traffic Safety



Reported the traffic deaths of people walking, biking, or rolling as 'Extremely', 'Very' or 'Moderately Important'



Reported being struck by a car in the past 12 months while walking, biking, or rolling