



TRAFFIC SAFETY COMMISSION

Washington Traffic Survey 2025

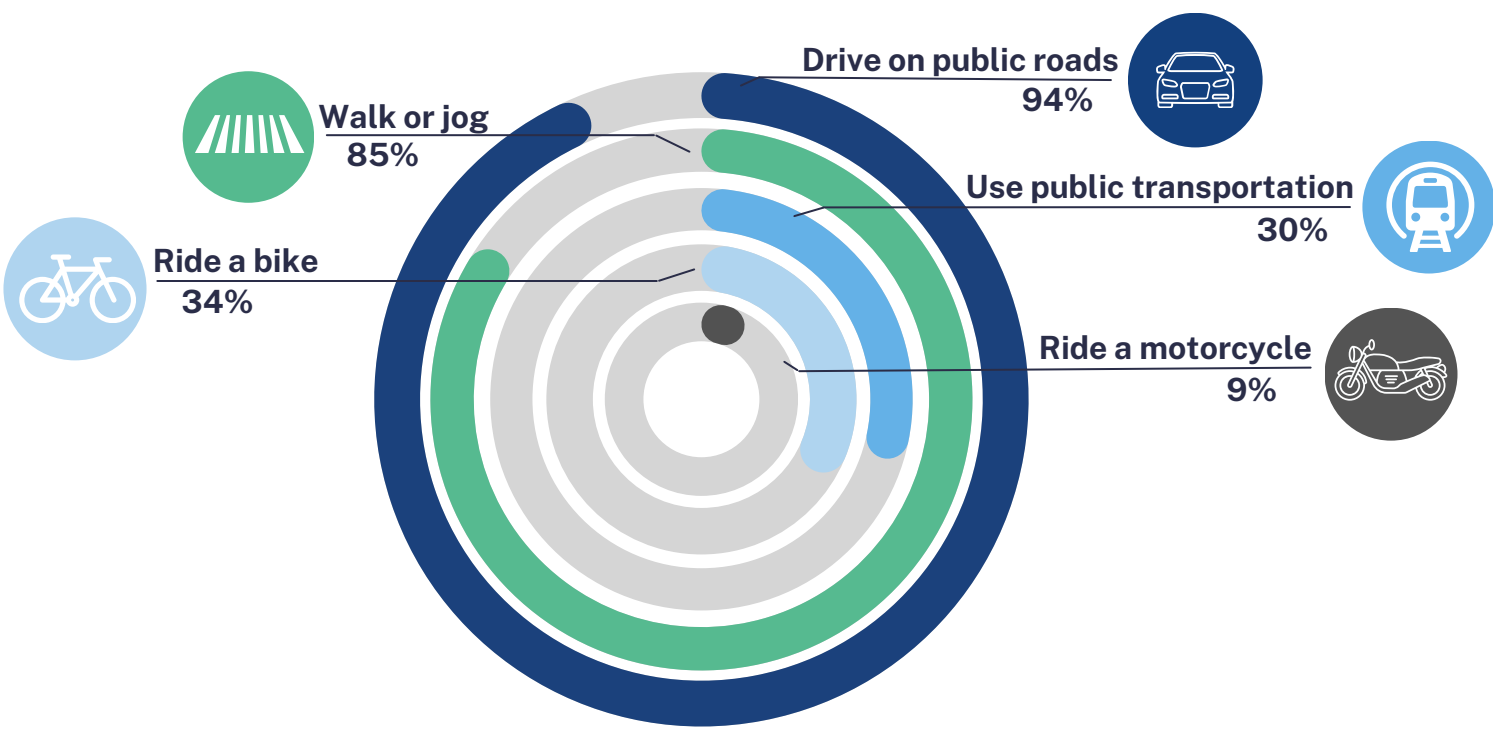
The Washington (WA) Traffic Safety Commission (WTSC) has conducted a statewide survey of adults aged 18 and over. This research aims to inform statewide planning and evaluation of traffic safety programs.

This infographic provides insight into this year's findings, covering road usage patterns, perceived roadway risks, community beliefs, and pedestrian and cyclist experiences on public roads.

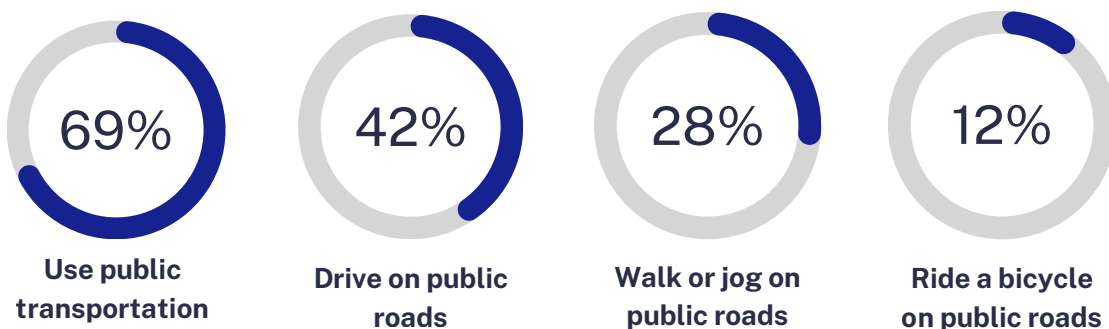
REGION 6: Clark & Skamania Counties

ROAD USE

How do people use public roads?



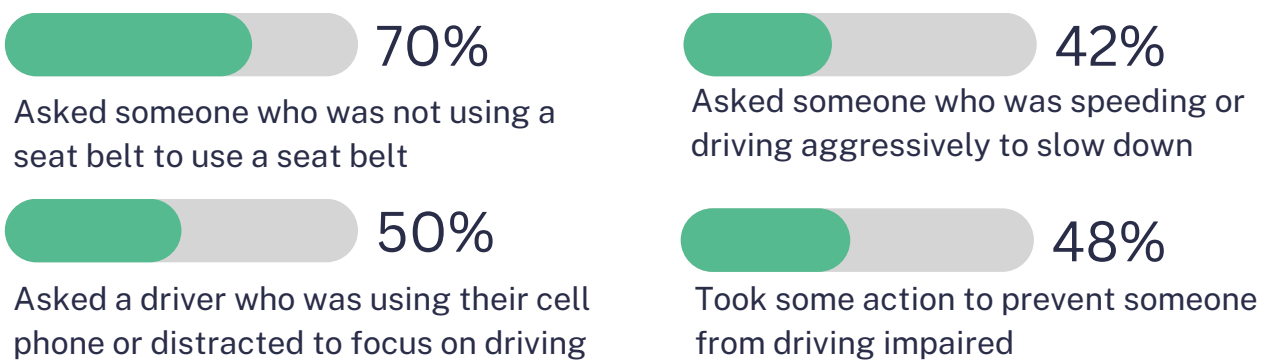
Adults who feel it is safe to...



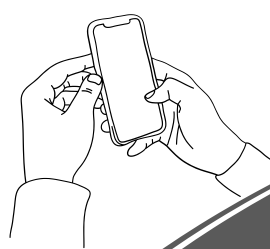
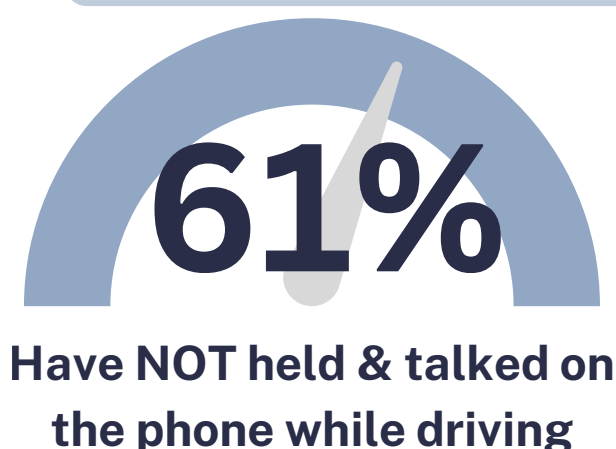
Belief in Zero Tolerance for Road Harm



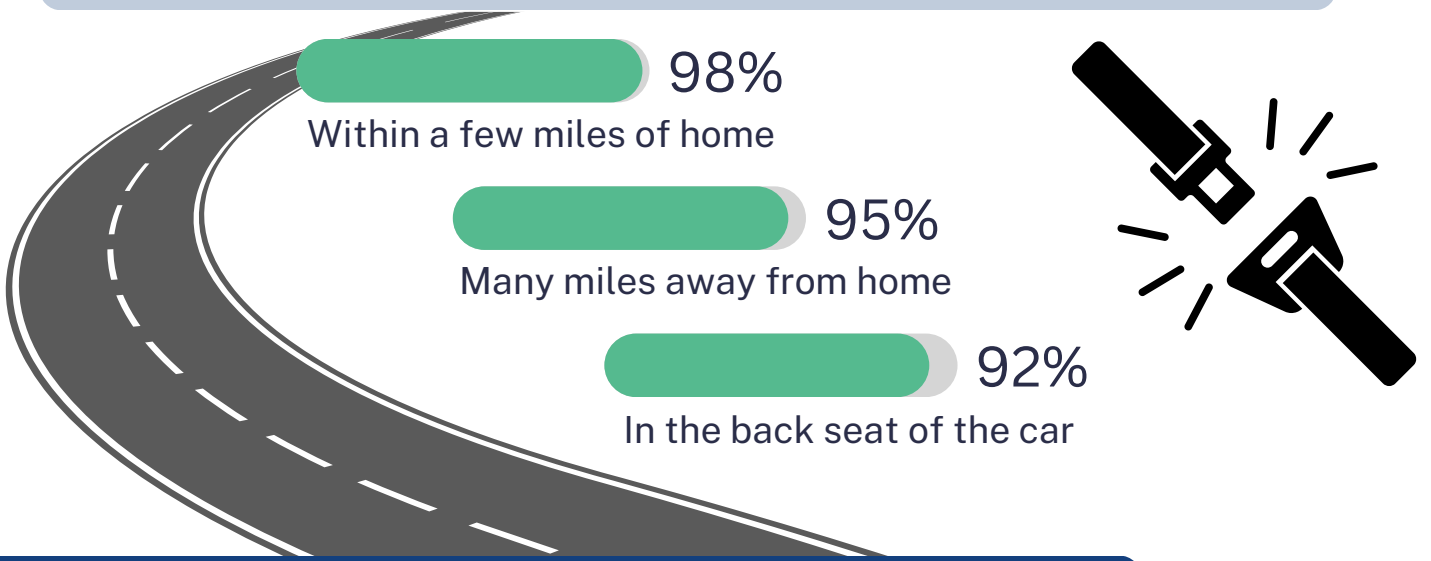
Public Interventions on Unsafe Driving Practices



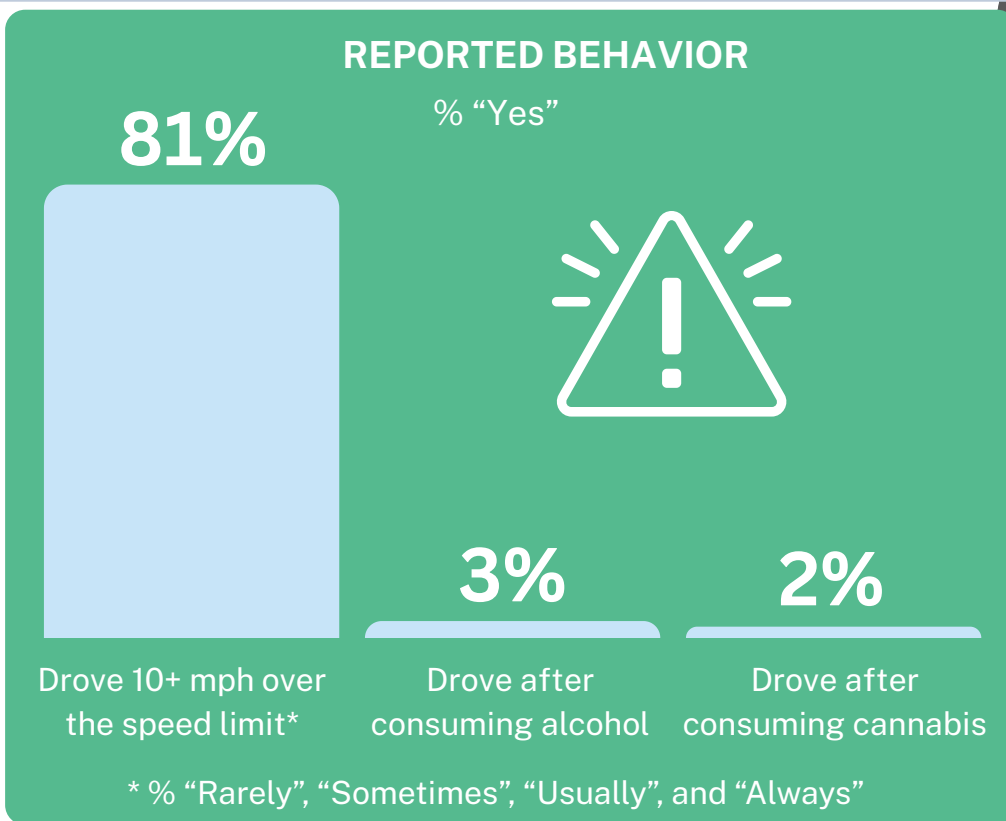
Phone Use While Driving



Where and when adults consistently buckle up

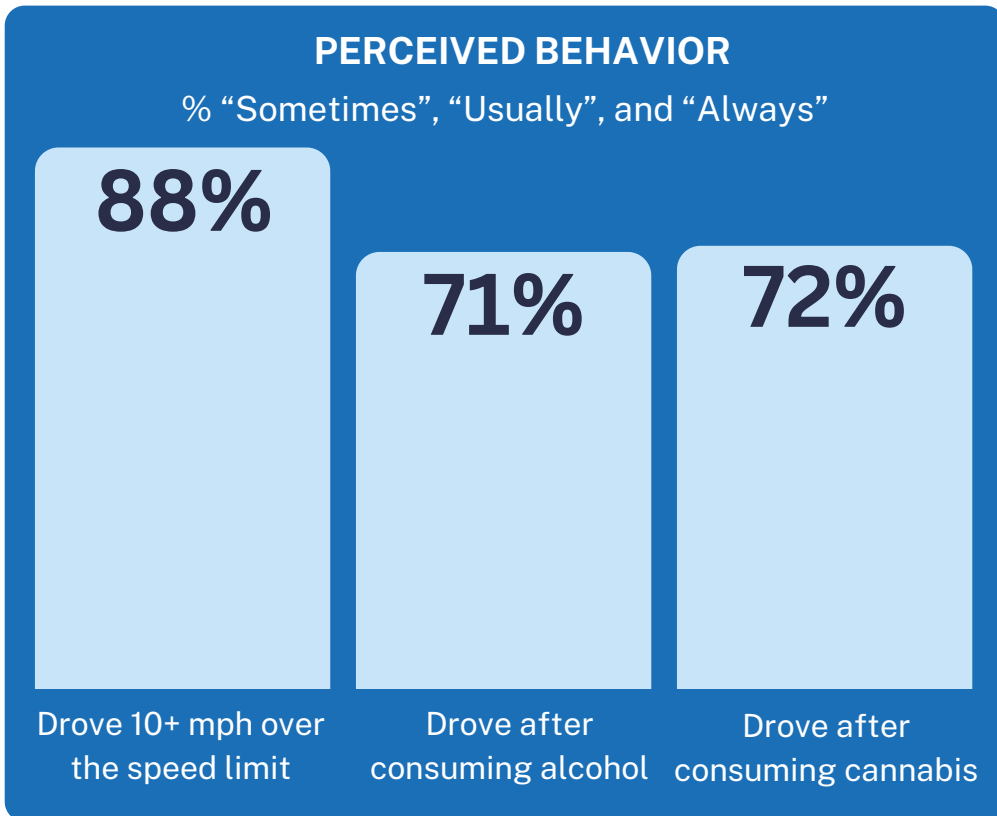


Self-Reported High-Risk Driving Behavior

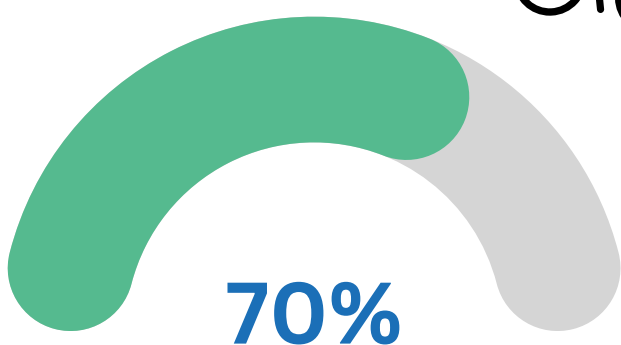


SPEED
LIMIT
55

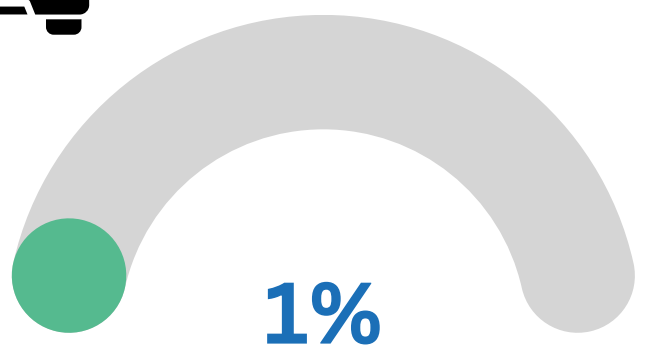
Perceived Frequency of High-Risk Driving Behavior in Community



Pedestrian and Cyclist Traffic Safety



Reported the traffic deaths of people walking, biking, or rolling as 'Extremely', 'Very' or 'Moderately Important'



Reported being struck by a car in the past 12 months while walking, biking, or rolling