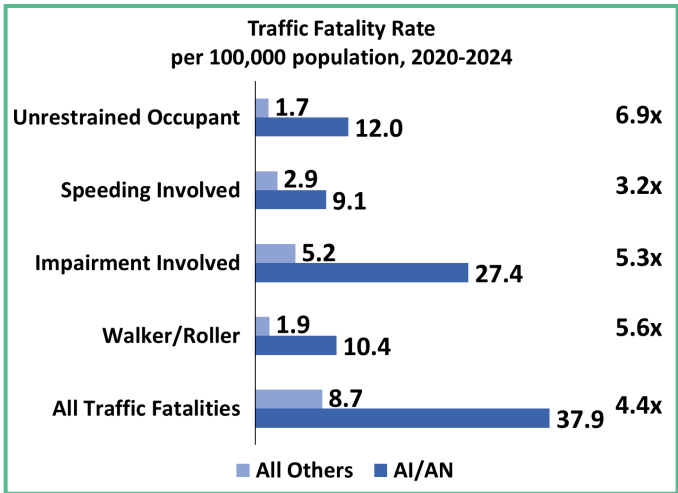
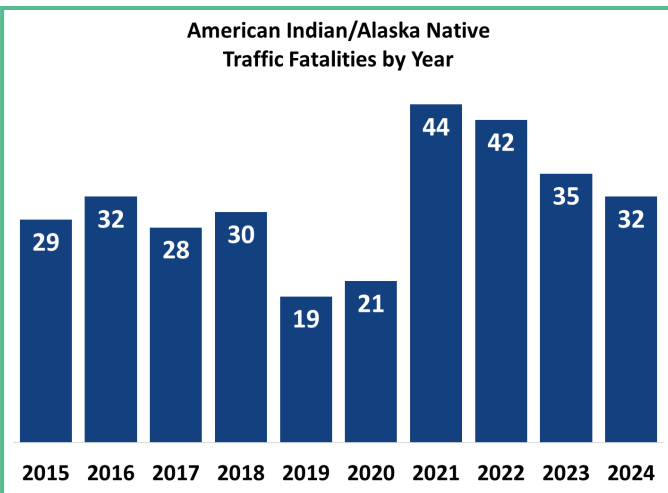




American Indian/Alaska Native (AI/AN) Traffic Safety

Since 2015, there have been 312 AI/AN traffic fatalities in Washington¹. In 2021, the number of AI/AN traffic fatalities more than doubled, reaching a ten-year high of 44. AI/AN people represent two percent of Washington’s total population. However, the traffic fatality rate per 100,000 population among AI/AN people is consistently three to five times higher than all other race groups.

I care, because AI/AN people are disproportionately impacted by traffic fatalities. Although one in fifty Washingtonians are AI/AN, one out of twenty traffic fatalities are AI/AN people.

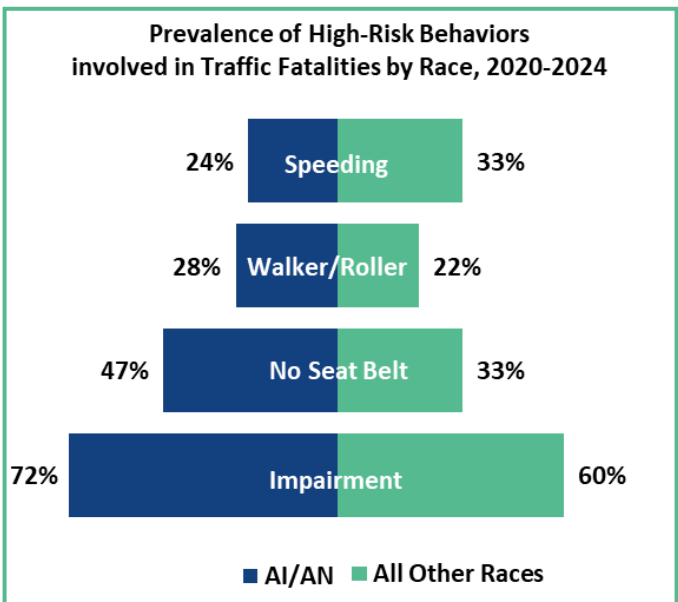


Did you know?

From 2020-2024:

- ⇒ There were 174 AI/AN traffic fatalities¹.
- ⇒ Seven out of ten (72%) AI/AN traffic fatalities involved impairment (either driver or active transportation user, AKA walkers or rollers).
- ⇒ One in four (24%) AI/AN traffic fatalities involved a speeding driver.
- ⇒ One in four (28%) fatally injured AI/AN people were under the age of 25.
- ⇒ One in four (28%) fatally injured AI/AN people were active transportation users.
- ⇒ Four out of ten (47%) fatally injured AI/AN motor vehicle occupants were unrestrained.

Traffic fatality rates reveal substantial disparities in risk leading to traffic fatalities^{1,5}. AI/AN active transportation users had a fatality rate 5.6 times greater than all other races. The rate of impairment involved fatalities among AI/AN people was 5.3 times greater than all other races. For unrestrained motor vehicle occupant fatalities, the rate was 6.9 times larger among AI/AN people. Seat belt use on Tribal lands is lower on average than the U.S. overall⁶.





American Indian/Alaska Native (AI/AN) Traffic Safety

AI/AN females are disproportionately impacted by traffic fatalities. On average, females account for 30 percent of all traffic fatalities in Washington. However, AI/AN females account for half of AI/AN traffic fatalities. From 2020-2024, three out of five (59%) unrestrained AI/AN motor vehicle occupant fatalities were female, compared to 28 percent for all other races¹. Of AI/AN female motor vehicle passenger fatalities, one in five were restrained (18%) were restrained, compared to half (50%) of all other females.

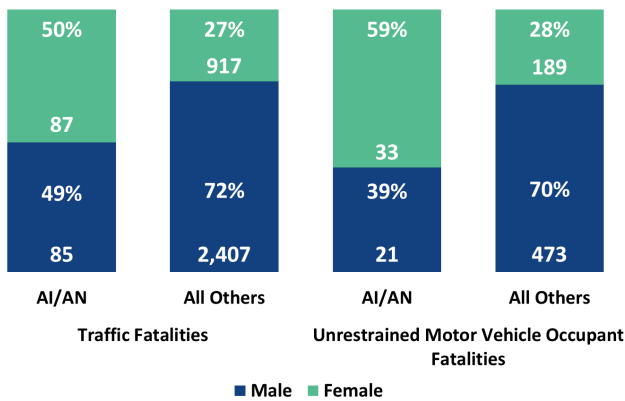
High-risk driving behaviors are commonly observed together. From 2020-2024, out of 55 unrestrained AI/AN motor vehicle occupant fatalities, nearly half (47%) involved a speeding driver and four out of five (78%) involved an impaired driver¹. Out of the 42 AI/AN fatalities that involved a speeding driver, four out of five (79%) involved an impaired driver.

Did you know?

From 2020-2024:

- ⇒ Two out of five (39%) fatal crashes resulting in an AI/AN fatality occurred in July, August, or September.
- ⇒ One in six (16%) fatal crashes resulting in an AI/AN fatality occurred on a Friday.
- ⇒ Two out of five (n=56, 37%) fatal crashes resulting in an AI/AN fatality occurred between 9pm and 3am.

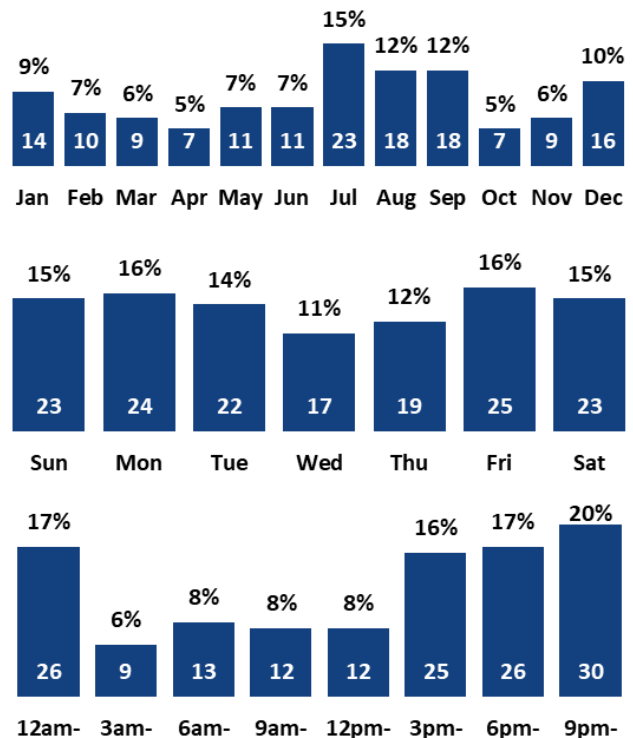
Proportion of Traffic Fatalities by Sex, 2020-2024



On average, females account for one in four driver fatalities. However, AI/AN females accounted for half (52%) of all AI/AN driver fatalities¹. Four out of five male (80%) and female (82%) AI/AN driver fatalities involved an impaired driver. One in four (23%) female AI/AN driver fatalities involved a distracted driver, compared to one in six (17%) male AI/AN driver fatalities. A similar proportion of male (31%) and female (28%) AI/AN driver fatalities involved a speeding driver.

The traffic fatality rate among males is generally twice as great as females. However, AI/AN males and females experience a similar traffic fatality rate. From 2020-2024, AI/AN females had a traffic fatality rate of 38 fatalities per 100,000 population while AI/AN males had a traffic fatality rate of 37 fatalities per 100,000 population³.

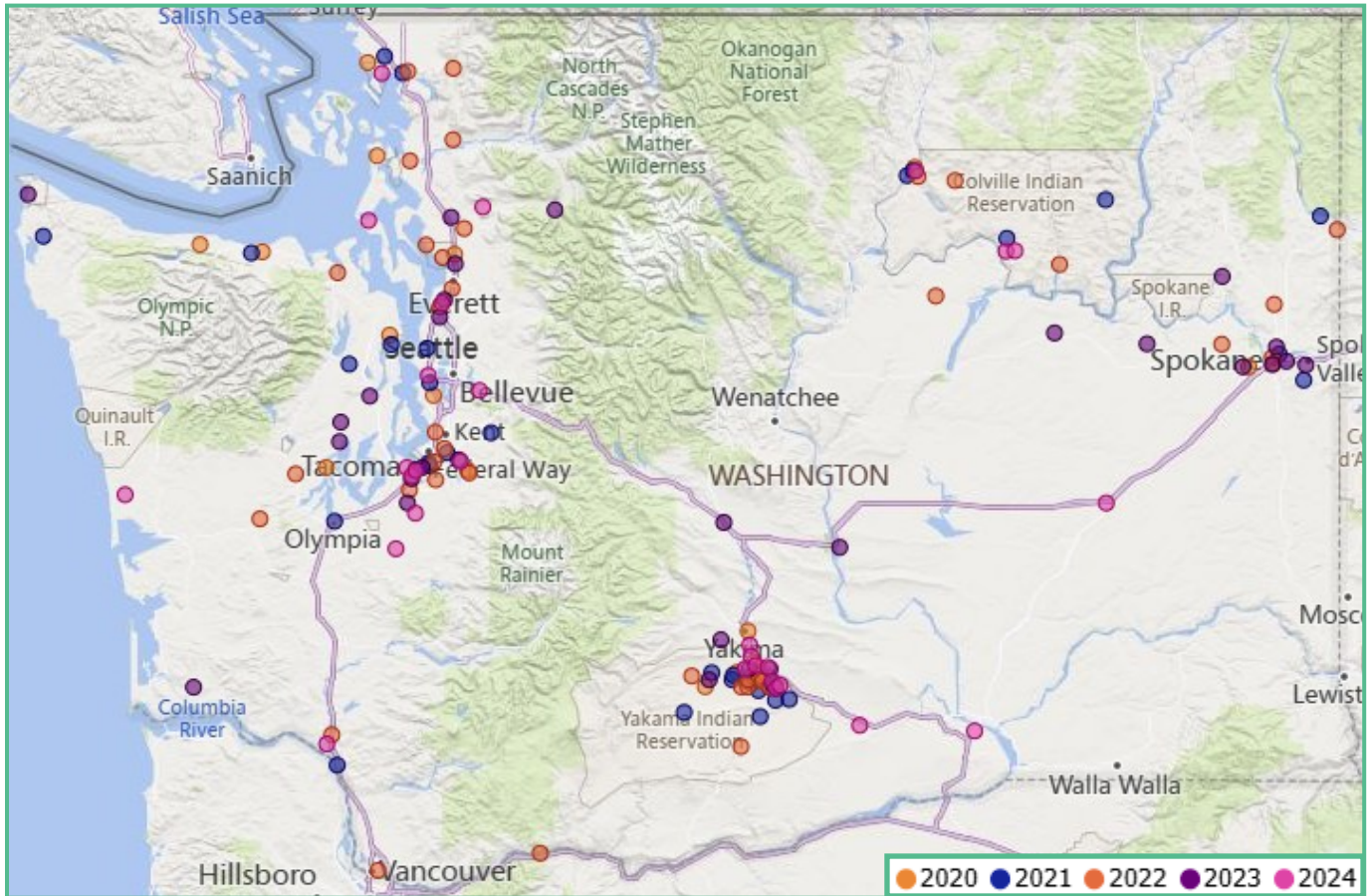
Fatal Crashes Resulting in an AI/AN Fatality by Month, Day & Time, 2020-2024





American Indian/Alaska Native (AI/AN) Traffic Safety

Locations of Fatal Crashes Resulting in an AI/AN Fatality in Washington, 2020-2024



Did you know?

From 2020-2024:

- ⇒ There were 153 fatal crashes resulting in an AI/AN fatality in Washington².
- ⇒ About two out of five (36%) fatal crashes resulting in an AI/AN fatality occurred on Tribal land.
- ⇒ Most fatal crashes resulting in an AI/AN fatality occurred in a rural setting (54%).
- ⇒ One-third (33%) of fatal crashes resulting in an AI/AN fatality occurred on county roads followed by about one in four (29%) on state routes.
- ⇒ The majority (63%) of fatal crashes resulting in an AI/AN fatality were single-vehicle crashes.

Data Sources

- ¹Fatalities Dashboard, <https://wtsc.wa.gov/dashboards/fatalities-dashboard/>
- ²American Indian/Alaska Native and Tribal Land Dashboard, <https://wtsc.wa.gov/research-data/ai-an-tribal-dashboard/>
- ³Traffic Fatality Rates Dashboard, <https://wtsc.wa.gov/dashboards/traffic-fatality-rates-dashboard/>
- ⁴Statewide Survey Dashboard, <https://wtsc.wa.gov/statewide-survey-dashboard/>
- ⁵Washington Population Estimates, Washington State Office of Financial Management, <https://ofm.wa.gov/washington-data-research/population-demographics>
- ⁶Bureau of Indian Affairs, Indian Highway Safety Program, FY2022 Annual Report

For more information, please visit the WTSC Data Dashboards <https://wtsc.wa.gov/dashboards/>, or contact the WTSC Research and Data Division (360) 725-9860.